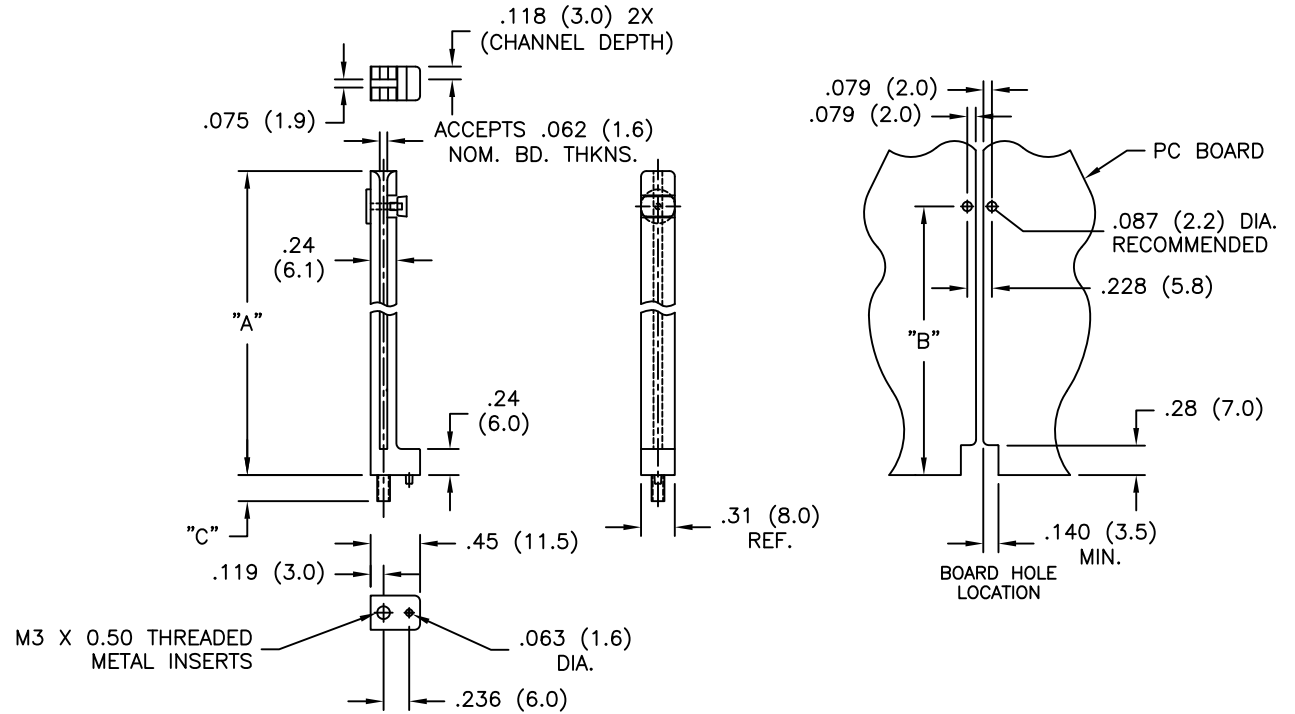


PART NO.	"A"	"B"	"C"
VMCG-70-MPBK-K	2.76 (70.0)	2.44 (62.5)	.22 (5.5)
VMCG-100-MPBK-K	3.94 (100.0)	3.62 (92.0)	.35 (9.0)



- NOTES:
- MATERIAL: NYLON 6, GLASS FILLED, (RMS-38).
-FLAME RETARDANT NYLON 6 UL 94 V-0,
30% GLASS FILLED (RMS-371), AVAILABLE
BY SPECIAL ORDER.
TO ORDER US P/N: VMCG-XX-MPBK-FR-K
 - COLOR: GRAY.
 - COMPONENTS:
 - LOCKING BUTTON: HDPE (RMS-284)
 - SCREW: STAINLESS STEEL (RMS-228)
 - THREADED INSERT: BRASS (RMS-231)
 - WASHER: STAINLESS STEEL (RMS-228)

G	SEE CO 200367 FOR CHANGES	SK 05.21.09	TITLE: VERTICAL MOUNT CARD GUIDE, TYPE 2	DWG IN IN (MM)	FINAL	PRINT TYPE CA
F	SEE ECN #1355 FOR CHANGES	SK 08.22.07				
E	SEE ECN #1285 FOR CHANGES	SK 02.12.07	TOLERANCES UNLESS NOTED	FILE # VMCG-2	DWN: P.B.	APP:
D	SEE ECN #873 FOR CHANGES	SM 10.26.04	.XX=±.010	MAT'L: SEE NOTES	DT: 03-24-94	DT:
C	DIM .45 (11.5) WAS .46 (12.0)	SM 03.15.02	.XXX=±.005	RE: RICHCO, INC.	RICHCO INC. PO BOX 804238, CHICAGO, 60680 (773) 539-4060	
B	UPDATED PRINT AND CHANGED FILE NO.	SM 10.10.01	FRAC=±1/64	PART # VMCG-2		
A	BOARD HOLE .087 WAS .067	J.L. 6.1.98	ANG=±1°	PART # VMCG-2		
REV	DESCRIPTION	ENGR DATE				