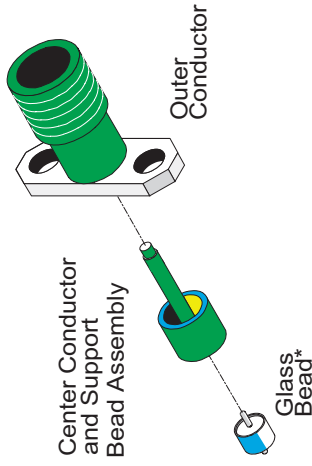


## V Connector Microstrip to V Female Flange Mount Connector Part Number V103F-012



**Figure 1.** Female Flange Mount Connectors, Unassembled

**1. Tools And Materials**  
No special tools or material are required for installation of the V103F-012 Flange Mount Connector.

**2. Machining Dimensions**  
Machining dimensions for the mounting hole required for installation of the microstrip to V female sparkplug connector are provided in Figure 3 on the reverse side of this page.

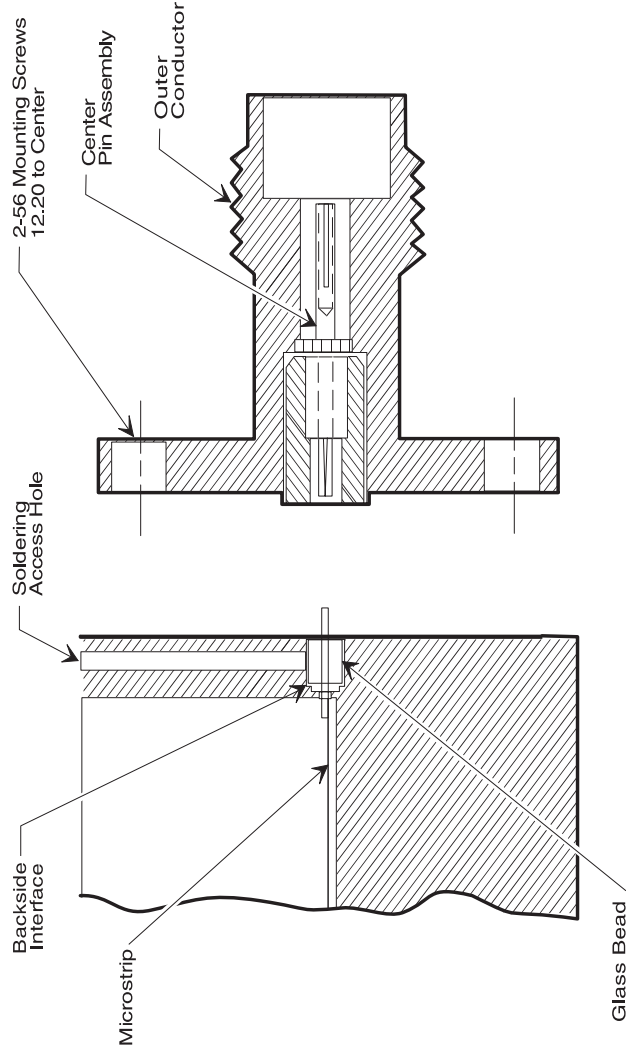
**3. Installation Instructions**  
Installation instructions for the flange-mount connector are given below. Figures 1 and 2 identify the connector parts.

- a. The V103F-012 uses shims to precisely set the pin depth. If your V103F-012 is supplied with shims:
  - (1) Remove the center conductor and support bead assembly.
  - (2) Insert all shims.
  - (3) Reinsert the center conductor and support bead assembly.

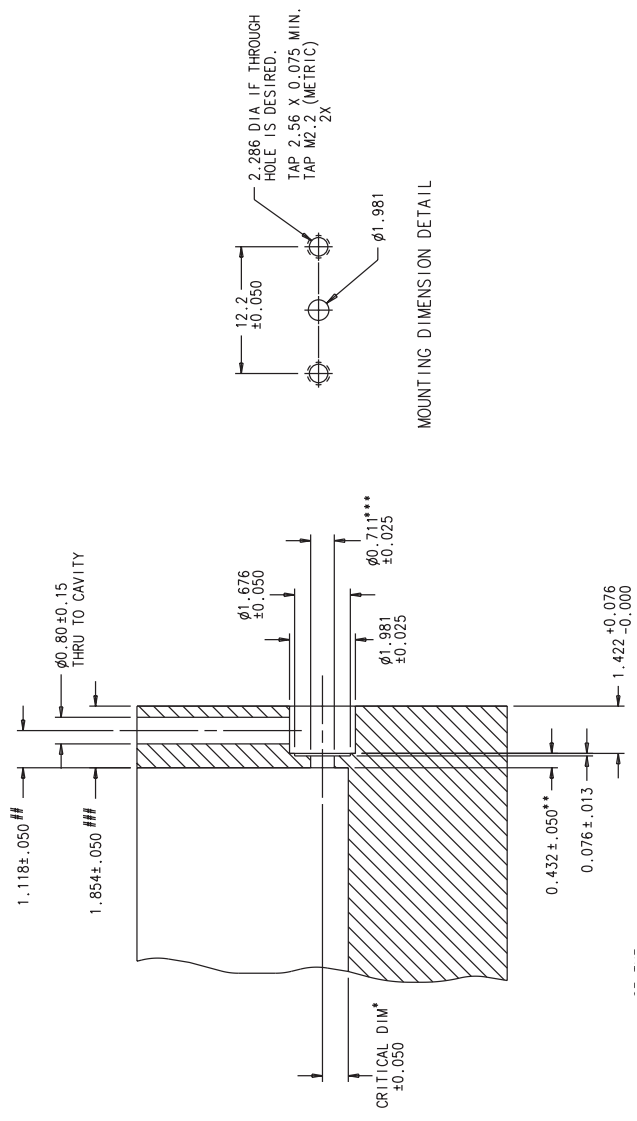
### NOTE

Flanges may not be flush with housing after installation. This does not degrade connector performance. Be careful, however, not to overtighten.

- b. Install V103F-012 outer conductor onto housing, making sure that center conductor mates properly with V103F-012 center pin. Secure outer conductor with two 2-56 inch (2.2 mm) screws. When tightening screws, use care to keep flanges parallel to housing.



**Figure 2.** Flange Mount Assembly



**NOTES.**

1. ALL DIMENSIONS ARE IN mm.
2. THE CONCENTRICITY OF THE 1.676 AND 1.981 HOLES TO THE 0.711 DIA HOLE IS CRITICAL AND MUST BE HELD WITHIN ±0.038mm.
3. WITH THE MODEL 01-104 OR 01-108 STEP DRILL KITS, ALL OF THE REQUIRED CONCENTRIC HOLES CAN BE MACHINED AT THE SAME TIME USING A SINGLE BIT.
4. THE ORIENTATIONS OF THE FLANGES AND TAPPED MOUNTING-SCREW HOLES ARE FOR INFORMATION ONLY. IN PRACTICE, THE FLANGES SHOULD BE ROTATED 45 DEGREES AND THE HOLES DRILLED AND TAPPED AT THE 2 O'CLOCK AND 8 O'CLOCK POSITIONS.

\* DIMENSION IS 0.152 (PIN RADIUS)  
 + SUBSTRATE  
 + SOLDER THICKNESS

\*\* DIMENSION IS 0.889 ±0.050mm IF SLIDING CONTACTS ARE USED.

\*\*\* DIMENSION IS 0.838 ±0.025mm IF SLIDING CONTACTS ARE USED.

## DIMENSION IS 1.575 ±0.050mm IF SLIDING CONTACTS ARE USED.

### DIMENSION IS 2.311 ±0.050mm IF SLIDING CONTACTS ARE USED.

MOUNTING DIMENSION DETAIL

**Figure 3.** Dimensions for V103F-012 Mounting Hole

V Connector is a trademark of Anritsu Company.  
 Teflon is a registered trademark of E.I. Du Pont De Nemours and Company.  
 \* Glass bead not supplied—Anritsu Part No. V100 or V100B.

Part Number: 10300-00040  
 Revision: A. Printed: September 2005  
 Copyright © 2005, Anritsu Company All rights reserved.



490 Jarvis Drive  
 Morgan Hill, California 95037-2809

