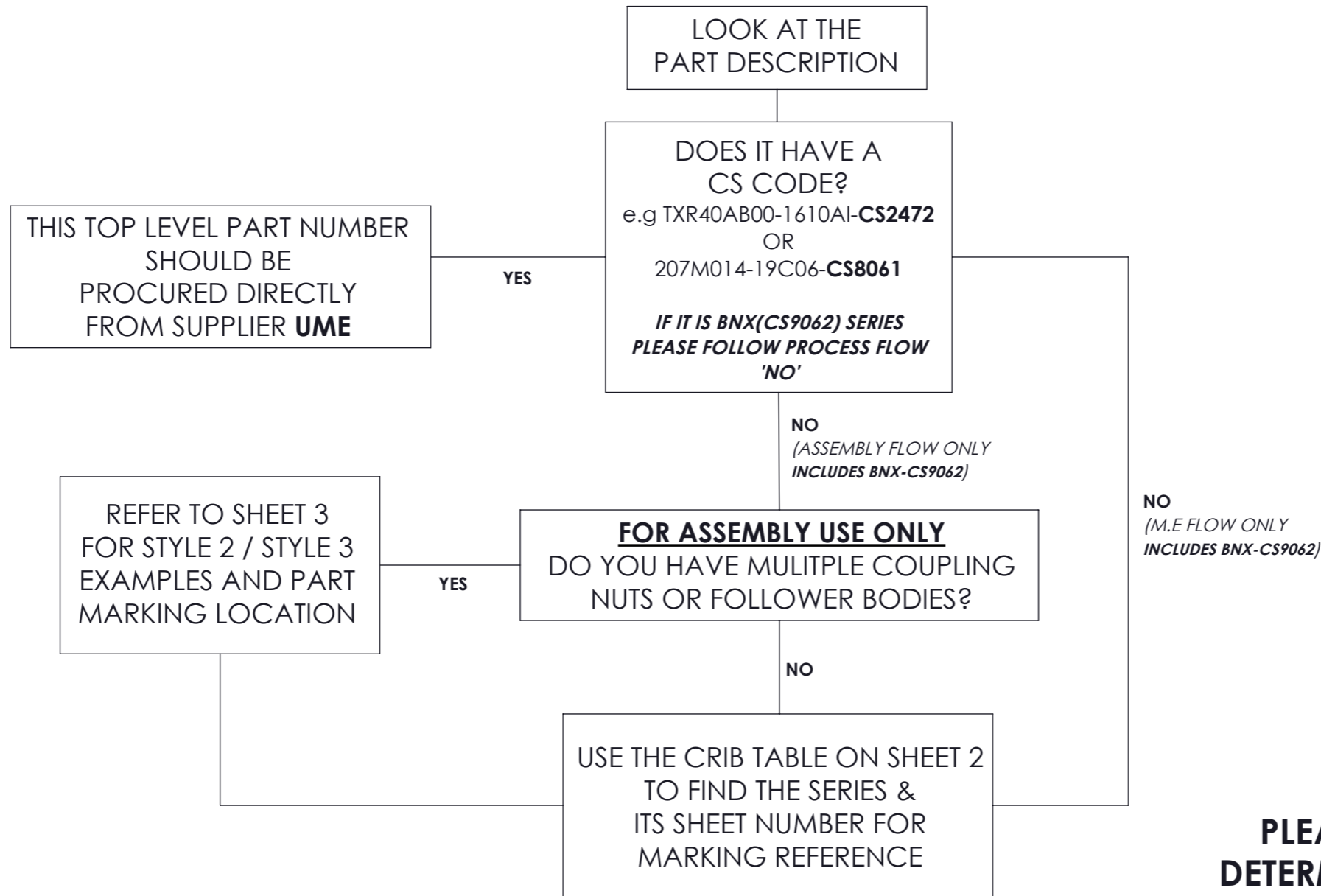


PART MARKING GUIDE FOR RAYCHEM CIRCULAR BACKSHELLS

THIS DOCUMENT TAKES PRECEDENCE OVER PRODUCTION DRAWINGS (BOM) & CUSTOMER DRAWINGS

DM0079

THIS DRAWING IS A CONTROLLED DOCUMENT



OTHER PART MARKING DOCUMENTS IF REQUIRED: -

- DM0044 - PROTECTION CAPS
- DM0050 - MICRO MIN BACKSHELLS
- DM0051 - D-SUB BACKSHELLS
- DM0107 - 85049 PRODUCTS
- DM0113 - CIRCULAR BACKSHELLS

NO
(M.E FLOW ONLY
INCLUDES BNX-CS9062)

PLEASE USE THIS FLOW CHART TO DETERMINE IF ANY EXEMPTIONS TAKE EFFECT, IF NOT THEN PROCEED TO THE CRIB TABLE ON SHEET 2.

AB	ECR-24-224090 (CRN 26424)	21/10/2024	NH	RS
AA	CRN 26756	01/10/2024	NH	RS
2	TMEPLATE UPDATED	08/03/2018	KKW	RS
REV	DESCRIPTION	DATE	DWN	APVD

DIMENSIONS: mm	TOLERANCES UNLESS OTHERWISE SPECIFIED: 0 PLC ±0,40 1 PLC ±0,20 2 PLC ±0,10 ANGLES ±1° ALL FILLETS 0,4 MAX
ALL DIAMETERS 0,10	
SURFACE FINISH Ra1,6 MAX REMOVE ALL BURRS AND SHARP EDGES TO 0,1 MAX	

DWN	16/02/2015	MATERIAL	N/A	HEAT TREAT	N/A
CHK	23/02/2015	TE Connectivity			
APVD	16/02/2015				
NAME	M.PAUL				
PART MARK GUIDE FOR CIRCULAR BACKSHELLS (RAYCHEM PARTS)					
SCALE	2:1	SIZE	A3	PART NO	DM0079
				SHEET	1 OF 7
				REV	AB

THIS INFORMATION IS CONFIDENTIAL AND PROPRIETARY TO TYCO ELECTRONICS CORPORATION AND ITS WORLDWIDE SUBSIDIARIES AND AFFILIATES (TE). IT MAY NOT BE DISCLOSED TO ANYONE, OTHER THAN TE PERSONNEL, WITHOUT AUTHORIZATION FROM TE (www.TE.com).

D

C

B

A

PART MARKING GUIDE FOR RAYCHEM CIRCULAR BACKSHELLS

THIS DOCUMENT TAKES PRECEDENCE OVER PRODUCTION DRAWINGS (BOM) & CUSTOMER DRAWINGS

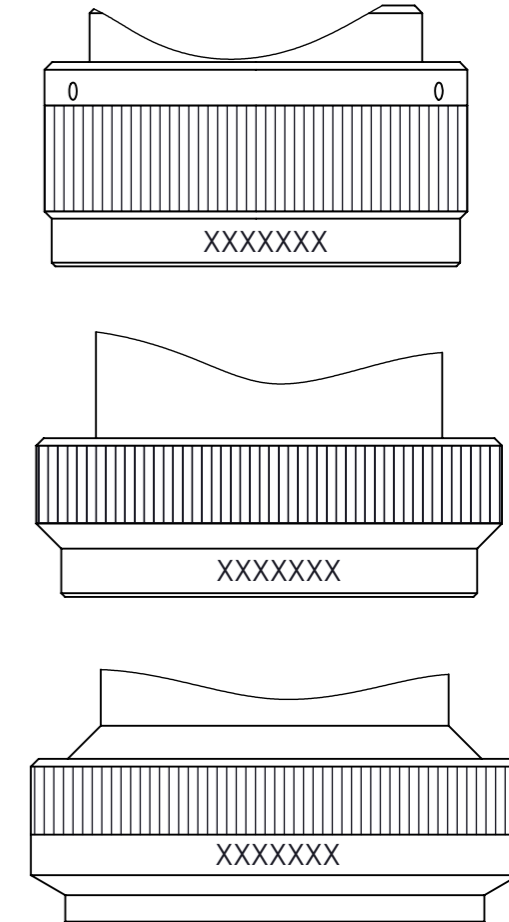
DM0079

THIS DRAWING IS A CONTROLLED DOCUMENT

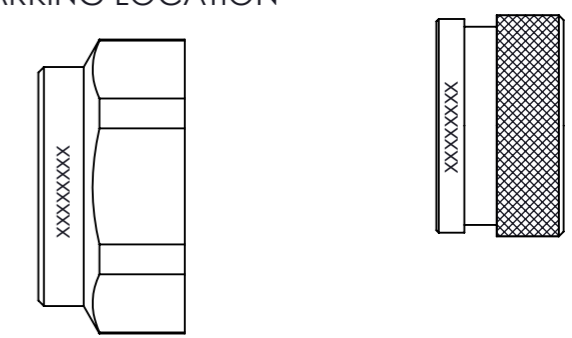
CRIB TABLE (USE THIS TABLE TO REFER TO WHICH SHEET FOR MARKING SEQUENCE)

SERIES	SHEET NO.	SERIES	SHEET NO.	SERIES	SHEET NO.	SERIES	SHEET NO.	SERIES	SHEET NO.
STXR15 / STX15	4	STXR61 / STX61	4	202M2	5	210M1	5	227M0	5
TXR15 / TX15	4	TXR61 / TX61	4	202M4	5	210M2	5	227M1	5
STXR18 / STX18	4	STXR64 / STX64	4	202M5	5	211M5	5	227M2	5
TXR18 / TX18	4	TXR64 / TX64	4	202M7	5	211M6	5	228M0	5
STXR21 / STX21	4	STXR66 / STX66	4	202M8	5	211M7	5	228M1	5
TXR21 / TX21	4	TXR66 / TX66	4	202M9	5	211M8	5	228M2	5
STXR30 / STX30	4	STXR71 / STX71	4	203M0	5	211M9	5	228M5	5
TXR30 / TX30	4	TXR71 / TX71	4	203M1	5	212M4	5	228M6	5
STXR31 / STX31	4	STXR75 / STX75	4	203M2	5	212M5	5	228M7	5
TXR31 / TX31	4	TXR75 / TX75	4	203M6	5	215M6	5	228M8	5
STXR32 / STX32	4	STXR76 / STX76	4	203M9	5	215M7	5	229M0	5
TXR32 / TX32	4	TXR76 / TX76	4	204M0	5	217M0	5	229M1	5
STXR37 / STX37	4	STXR78 / STX78	4	204M1	5	217M1	5	229M3	5
TXR37 / TX37	4	TXR78 / TX78	4	204M2	5	217M2	5	BND18 / BNX18	6
STXR40 / STX40	4	STXR79 / STX79	4	204M3	5	218M6	5	BND21 / BNX21	6
TXR40 / TX40	4	TXR79 / TX79	4	205M0	5	218M7	5	BND32 / BNX32	6
STXR41 / STX41	4	STXR80 / STX80	4	205M1	5	218M8	5	BND40 / BNX40	6
TXR41 / TX41	4	TXR80 / TX80	4	205M2	5	218M9	5	BND41 / BNX41	6
STXR47 / STX47	4	STXR81 / STX81	4	206M0	5	219M0	5	BND47 / BNX47	6
TXR47 / TX47	4	TXR81 / TX81	4	206M1	5	219M1	5	BND54 / BNX54	6
STXR51 / STX51	4	STXR82 / STX82	4	206M2	5	219M2	5	BND64 / BNX64	6
TXR51 / TX51	4	TXR82 / TX82	4	207M3	5	225M0	5	BND76 / BNX76	6
STXR52 / STX52	4	STXR88 / STX88	4	208M7	5	225M1	5	200Z	7
TXR52 / TX52	4	TXR88 / TX88	4	208M8	5	225M2	5	500Z	7
STXR54 / STX54	4	201M1	5	208M9	5	225M3	5	700Z	7
TXR54 / TX54	4	201M9	5	209M3	5	225M4	5	BNX (CS9062)	7
STXR58 / STX58	4	202M0	5	209M4	5	225M5	5	TXS201	7
TXR58 / TX58	4	202M1	5	210M0	5	225M6	5		

EXAMPLES OF NUT PROFILES AND RESPECTIVE MARKING LOCATIONS



S700 NUT EXAMPLE MARKING LOCATION



EXAMPLES OF WHERE TO FIND THE SERIES CODE IN THE PART DESCRIPTION:

TXR40AB00-1205AI **202M112-19B05** **BND40AB00-1205**

SERIES _____
(MINIMUM 4 CHARACTERS LONG, FOUND IN TABLE ABOVE)

DIMENSIONS: mm	TOLERANCES UNLESS OTHERWISE SPECIFIED: 0 PLC ±0,40 1 PLC ±0,20 2 PLC ±0,10 ANGLES ±1° ALL FILLETS 0,4 MAX

DWN	16/02/2015	MATERIAL	N/A	HEAT TREAT	N/A
K.KUTA-WINCZURA					
CHK	23/02/2015	TE Connectivity			
K.SHEPPARD					
APVD	16/02/2015				
M.PAUL					
NAME PART MARK GUIDE FOR CIRCULAR BACKSHELLS (RAYCHEM PARTS)					
SCALE	SIZE	PART NO	SHEET	OF	REV
2:1	A3	DM0079	2	7	AB

REV	DESCRIPTION	DATE	DWN	APVD
-	SEE SHEET 1	-	-	-

ALL DIAMETERS 0,10
SURFACE FINISH Ra1,6 MAX
REMOVE ALL BURRS AND SHARP EDGES TO 0,1 MAX

THIS INFORMATION IS CONFIDENTIAL AND PROPRIETARY TO TYCO ELECTRONICS CORPORATION AND ITS WORLDWIDE SUBSIDIARIES AND AFFILIATES (TE). IT MAY NOT BE DISCLOSED TO ANYONE, OTHER THAN TE PERSONNEL, WITHOUT AUTHORIZATION FROM TE (www.TE.com).

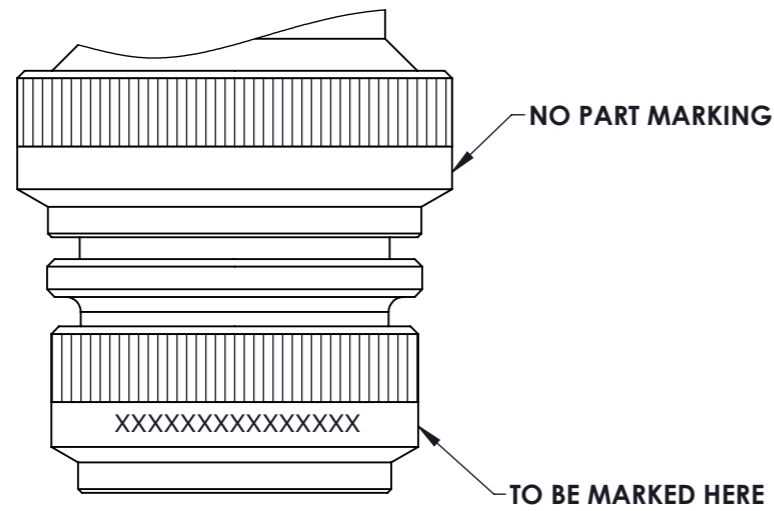
PART MARKING GUIDE FOR RAYCHEM CIRCULAR BACKSHELLS

SEE NOTES FOR EXEMPTIONS

THIS DOCUMENT TAKES PRECEDENCE OVER PRODUCTION DRAWINGS (BOM) & CUSTOMER DRAWINGS

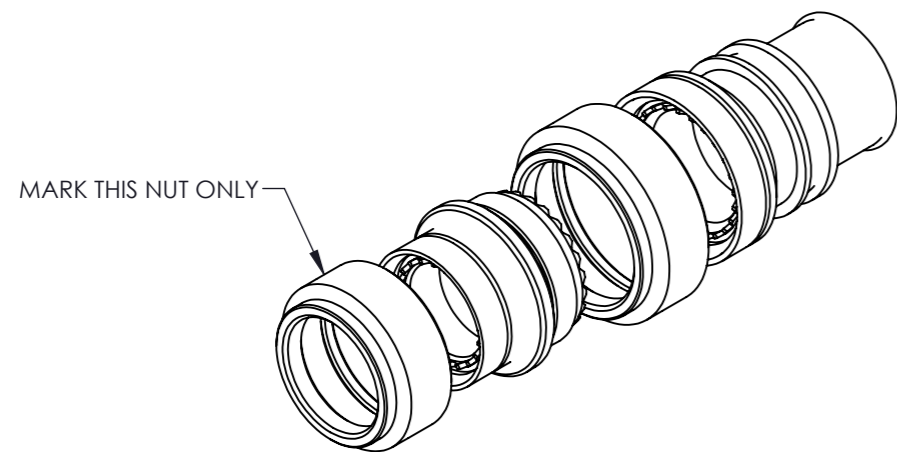
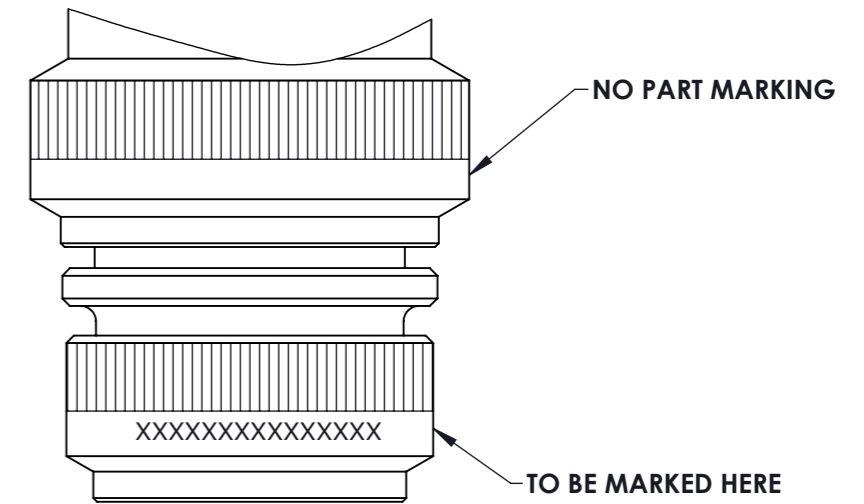
STYLE 2 / STYLES 3 BACKSHELL EXAMPLE
TWO PIECE BACKSHELL ASSEMBLY
 ONLY FRONT NUT MUST BE PART MARKED

STYLE 2 EXAMPLE

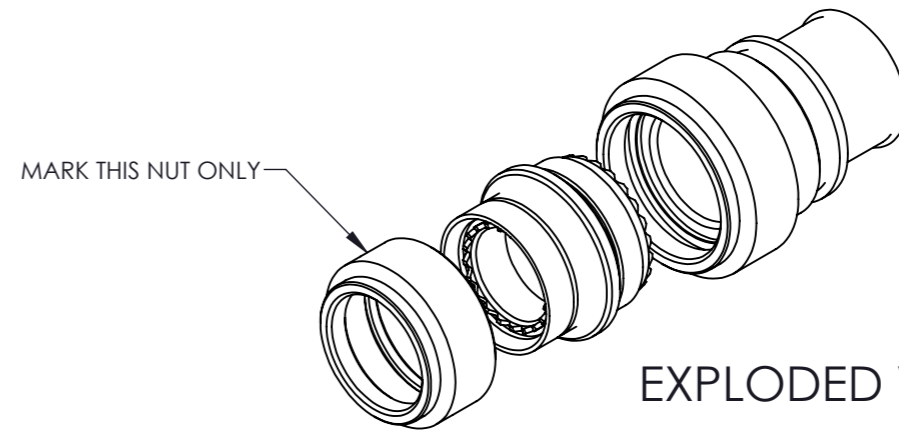


STYLE 3 EXAMPLE

USE SAME PARAMETERS AS STATED ON T2 EXAMPLE



EXPLODED VIEW



EXPLODED VIEW

-	SEE SHEET 1	-	-	-
REV	DESCRIPTION	DATE	DWN	APVD

DIMENSIONS: mm	TOLERANCES UNLESS OTHERWISE SPECIFIED: 0 PLC ±0,40 1 PLC ±0,20 2 PLC ±0,10 ANGLES ±1° ALL FILLETS 0,4 MAX
ALL DIAMETERS	
SURFACE FINISH Ra1,6 MAX REMOVE ALL BURRS AND SHARP EDGES TO 0,1 MAX	

DWN	16/02/2015	MATERIAL	N/A	HEAT TREAT	N/A
CHK	K.KUTA-WINCZURA	TE Connectivity			
CHK	23/02/2015				
APVD	K.SHEPPARD				
APVD	M.PAUL	PART MARKING GUIDE FOR CIRCULAR BACKSHELLS (RAYCHEM PARTS)			
NAME					
SCALE	2:1	SIZE	A3	PART NO	DM0079
				SHEET	3 OF 7
				REV	AB

THIS DRAWING IS A CONTROLLED DOCUMENT DWG NO DM0079

THIS INFORMATION IS CONFIDENTIAL AND PROPRIETARY TO TYCO ELECTRONICS CORPORATION AND ITS WORLDWIDE SUBSIDIARIES AND AFFILIATES (TE). IT MAY NOT BE DISCLOSED TO ANYONE, OTHER THAN TE PERSONNEL, WITHOUT AUTHORIZATION FROM TE (www.TE.com).

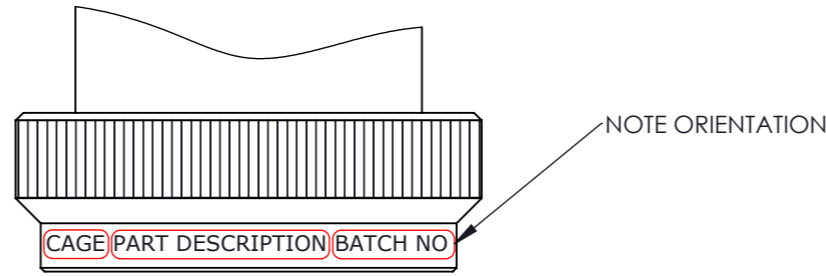
PART MARKING GUIDE FOR RAYCHEM CIRCULAR BACKSHELLS

PART MARKING DETAILS TABLE - TXR SERIES REQUIRING CAGE CODE, PART DESCRIPTION AND BATCH NUMBER

DM0079

THIS DRAWING IS A CONTROLLED DOCUMENT

STXR / STX / TXR / TX / TXS SERIES		
STXR15 / STX15	STXR52 / STX52	STXR80 / STX80
TXR15 / TX15	TXR52 / TX52	TXR80 / TX80
STXR18 / STX18	STXR54 / STX54	STXR81 / STX81
TXR18 / TX18	TXR54 / TX54	TXR81 / TX81
STXR21 / STX21	STXR58 / STX58	STXR82 / STX82
TXR21 / TX21	TXR58 / TX58	TXR82 / TX82
STXR30 / STX30	STXR61 / STX61	STXR88 / STX88
TXR30 / TX30	TXR61 / TX61	TXR88 / TX88
STXR31 / STX31	STXR64 / STX64	
TXR31 / TX31	TXR64 / TX64	
STXR32 / STX32	STXR66 / STX66	
TXR32 / TX32	TXR66 / TX66	
STXR37 / STX37	STXR71 / STX71	
TXR37 / TX37	TXR71 / TX71	
STXR40 / STX40	STXR75 / STX75	
TXR40 / TX40	TXR75 / TX75	
STXR41 / STX41	STXR76 / STX76	
TXR41 / TX41	TXR76 / TX76	
STXR47 / STX47	STXR78 / STX78	
TXR47 / TX47	TXR78 / TX78	
STXR51 / STX51	STXR79 / STX79	
TXR51 / TX51	TXR79 / TX79	



MARKING SEQUENCE

CAGE CODE PART DESCRIPTION T*****

***** TO BE REPLACED WITH BATCH NUMBER

NOTES: -

- STANDARD TINEL PARTS SHALL ALWAYS BE PART MARKED WITH THE PREFIX TXR WHETHER A TINEL RING IS ORDERED OR NOT.
- NO REFERENCE TO OPTIONAL BRAID CONFIGURATIONS OR TINEL RING SIZE SHALL BE MADE:
e.g.: -12 FOR 12" BRAID LENGTH OR -AI FOR AN INSULATED 'A' SIZE RING SHALL **NOT** BE MARKED.
- OPTIONS DENOTING PHYSICAL DIFFERENCES TO THE ADAPTOR SHALL BE MARKED.
e.g.: 'D' MODIFICATION, 'J' MODIFICATION OR 'O' RING VARIANTS.

EXAMPLE SEQUENCES

DETAIL	PART DESCRIPTION	MARKING SEQUENCE EXAMPLE
BASIC WITH RING	TXR40AB00-1206AI	= 06090-TXR40AB00-1206 T*****
BASIC WITHOUT RING	TX40AB00-1206	= 06090-TXR40AB00-1206 T*****
STEP UP BASIC WITH RING	STXR40AB00-1206AI	= 06090-STXR40AB00-1206 T*****
BASIC WITH RING AND 6" BRAID	TXR40AB00-1206AI2	= 06090-TXR40AB00-1206 T*****
BASIC WITH RING AND 12" BRAID	TXR40AB00-1206AI2-12	= 06090-TXR40AB00-1206 T*****
WITH 1 MODIFICATION CODE	TXR40AB00-1206AI-D	= 06090-TXR40AB00-1206D T*****
WITH 2 MODIFICATION CODE	TXR40AB00-1206AI-DF	= 06090-TXR40AB00-1206DF T*****
WITH 3 MODIFICATION CODE	TXR40AB00-1206AI-DFH	= 06090-TXR40AB00-1206DFH T*****
WITH 4 MODIFICATION CODE	TXR40AB00-1206AI-DFHL	= 06090-TXR40AB00-1206DFHL T*****

EXAMPLES OF WHERE TO FIND THE SERIES CODE IN THE PART DESCRIPTION:

TXR40AB00-1205AI **202M112-19B05** **BND40AB00-1205**

SERIES (MINIMUM 4 CHARACTERS LONG, FOUND IN TABLE ABOVE)

DIMENSIONS: mm	TOLERANCES UNLESS OTHERWISE SPECIFIED:
	0 PLC ±0,40 1 PLC ±0,20 2 PLC ±0,10 ANGLES ±1° ALL FILLETS 0,4 MAX

DWN	16/02/2015	MATERIAL	N/A	HEAT TREAT	N/A
CHK	23/02/2015	TE Connectivity			
APVD	16/02/2015				
NAME	M.PAUL				
PART MARK GUIDE FOR CIRCULAR BACKSHELLS (RAYCHEM PARTS)					
SCALE	2:1	SIZE	A3	PART NO	DM0079
REV	-	DESCRIPTION	DATE	DWN	APVD
		SEE SHEET 1			

ALL DIAMETERS 0,10
SURFACE FINISH Ra1,6 MAX
REMOVE ALL BURRS AND SHARP EDGES TO 0,1 MAX

THIS INFORMATION IS CONFIDENTIAL AND PROPRIETARY TO TYCO ELECTRONICS CORPORATION AND ITS WORLDWIDE SUBSIDIARIES AND AFFILIATES (TE). IT MAY NOT BE DISCLOSED TO ANYONE, OTHER THAN TE PERSONNEL, WITHOUT AUTHORIZATION FROM TE (www.TE.com).

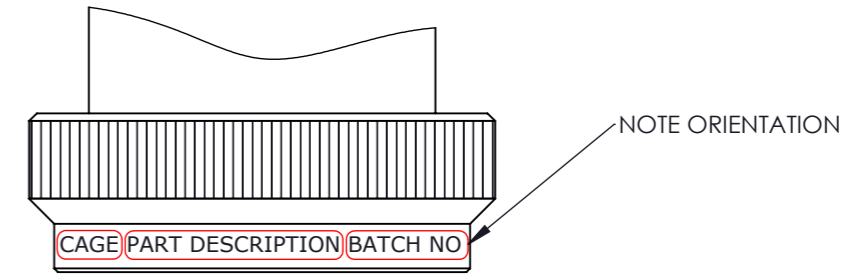
PART MARKING GUIDE FOR RAYCHEM CIRCULAR BACKSHELLS

PART MARKING DETAILS TABLE - 200M SERIES REQUIRING CAGE CODE, PART DESCRIPTION AND BATCH NUMBER

DM0079

THIS DRAWING IS A CONTROLLED DOCUMENT

200M SERIES						
201M1		206M0		217M1		228M5
201M9		206M1		217M2		228M6
202M0		206M2		218M6		228M7
202M1		207M3		218M7		228M8
202M2		208M7		218M8		229M0
202M4		208M8		218M9		229M1
202M5		208M9		219M0		229M3
202M7		209M3		219M1		
202M8		209M4		219M2		
202M9		210M0		225M0		
203M0		210M1		225M1		
203M1		210M2		225M2		
203M2		211M5		225M3		
203M6		211M6		225M4		
203M9		211M7		225M5		
204M0		211M8		225M6		
204M1		211M9		227M0		
204M2		212M4		227M1		
204M3		212M5		227M2		
205M0		215M6		228M0		
205M1		215M7		228M1		
205M2		217M0		228M2		



MARKING SEQUENCE

CAGE CODE PART DESCRIPTION T*****

***** TO BE REPLACED WITH BATCH NUMBER

EXAMPLE SEQUENCES

DETAIL	PART DESCRIPTION	MARKING SEQUENCE EXAMPLE
BASIC	201M108-19B	= 06090-201M108-19B T*****
WITH 1 MODIFICATION CODE	201M108-19B-20	= 06090-201M108-19B-20 T*****
WITH 2 MODIFICATION CODE	201M108-19B-DL	= 06090-201M108-19B-DL T*****

EXAMPLES OF WHERE TO FIND THE SERIES CODE IN THE PART DESCRIPTION:

TXR40AB00-1205A1 **202M112-19B05** **BND40AB00-1205**

SERIES (MINIMUM 4 CHARACTERS LONG, FOUND IN TABLE ABOVE)

DIMENSIONS: mm	TOLERANCES UNLESS OTHERWISE SPECIFIED: 0 PLC ±0,40 1 PLC ±0,20 2 PLC ±0,10 ANGLES ±1° ALL FILLETS 0,4 MAX

DWN	16/02/2015	MATERIAL	N/A	HEAT TREAT	N/A
CHK	K.KUTA-WINCZURA	TE Connectivity			
CHK	23/02/2015				
APVD	M.PAUL				
APVD	16/02/2015	NAME PART MARK GUIDE FOR CIRCULAR BACKSHELLS (RAYCHEM PARTS)			
SCALE	2:1	SIZE	A3	PART NO	DM0079
REV	-	SHEET	5 OF 7	REV	AB

ALL DIAMETERS 0,10
SURFACE FINISH Ra1,6 MAX
REMOVE ALL BURRS AND SHARP EDGES TO 0,1 MAX

THIS INFORMATION IS CONFIDENTIAL AND PROPRIETARY TO TYCO ELECTRONICS CORPORATION AND ITS WORLDWIDE SUBSIDIARIES AND AFFILIATES (TE). IT MAY NOT BE DISCLOSED TO ANYONE, OTHER THAN TE PERSONNEL, WITHOUT AUTHORIZATION FROM TE (www.TE.com).

PART MARKING GUIDE FOR RAYCHEM CIRCULAR BACKSHELLS (cont.)

PART MARKING DETAILS TABLE - **BACKSHELL SERIES REQUIRING SPECIAL MARKING or LOCATION REQUIREMENTS (N = NO / Y = YES)**

SERIES	CAGE CODE	CAGE CODE	PART DESCRIPTION	BATCH NUMBER PREFIX	PREFIX LETTER	BATCH NUMBER	DATE CODE	DATE CODE FORMAT	ADDITIONAL INFORMATION
200Z	Y	06090	Y	Y	T	Y	N	-	MARKING LOCATION ON CUSTOMER DRAWING
500Z	Y	06090	Y	Y	T	Y	N	-	MARKING LOCATION ON CUSTOMER DRAWING
700Z	Y	06090	Y	Y	T	Y	N	-	MARKING LOCATION ON CUSTOMER DRAWING
TXS201	Y	06090	Y	Y	T	Y	Y	YYWW	MARK THE DATE CODE BEFORE THE BATCH NUMBER
BNX40 (CS9062)	Y	06090	Y	Y	T	Y	Y	YYWW	MARK THE DATE CODE BEFORE THE BATCH NUMBER, SEE CUSTOMER DRAWING FOR MORE DETAILS
BNX41 (CS9062)	Y	06090	Y	Y	T	Y	Y	YYWW	MARK THE DATE CODE BEFORE THE BATCH NUMBER, SEE CUSTOMER DRAWING FOR MORE DETAILS
BNX54 (CS9062)	Y	06090	Y	Y	T	Y	Y	YYWW	MARK THE DATE CODE BEFORE THE BATCH NUMBER, SEE CUSTOMER DRAWING FOR MORE DETAILS

EXAMPLE OF WHERE TO FIND THE SERIES CODE IN THE PART DESCRIPTION:

200Z5500-19B

SERIES 200Z
(MINIMUM 4 CHARACTERS LONG, FOUND IN TABLE ABOVE)

DIMENSIONS: mm	TOLERANCES UNLESS OTHERWISE SPECIFIED: 0 PLC ±0,40 1 PLC ±0,20 2 PLC ±0,10 ANGLES ±1° ALL FILLETS 0,4 MAX
ALL DIAMETERS 0,10	
SURFACE FINISH Ra1,6 MAX REMOVE ALL BURRS AND SHARP EDGES TO 0,1 MAX	

DWN	16/02/2015	MATERIAL	N/A	HEAT TREAT	N/A
CHK	23/02/2015	TE Connectivity			
APVD	16/02/2015				
NAME	M.PAUL				
PART MARK GUIDE FOR CIRCULAR BACKSHELLS (RAYCHEM PARTS)					
SCALE	2:1	SIZE	A3	PART NO	DM0079
REV	-	SHEET	7 OF 7	REV	AB

-	SEE SHEET 1	-	-	-
REV	DESCRIPTION	DATE	DWN	APVD

DM0079

THIS DRAWING IS A CONTROLLED DOCUMENT

THIS INFORMATION IS CONFIDENTIAL AND PROPRIETARY TO TYCO ELECTRONICS CORPORATION AND ITS WORLDWIDE SUBSIDIARIES AND AFFILIATES (TE). IT MAY NOT BE DISCLOSED TO ANYONE, OTHER THAN TE PERSONNEL, WITHOUT AUTHORIZATION FROM TE (www.TE.com).