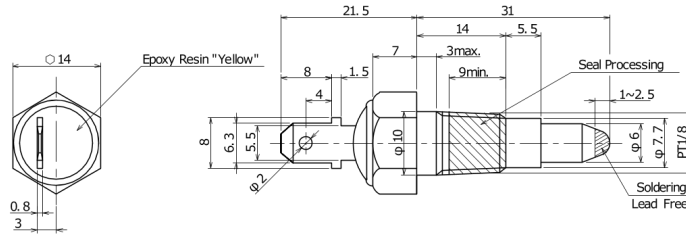


TRS1-95BPR001

Aliases (USEP95BPR00100)

KEMET, TRS-P, Thermal Reed Switch, Screw-In, 3C Temperature Accuracy, High Reliability, High-Speed Response, Long Operational Life, Excellent Environmental Durability, High Temperature Accuracy, 95°C, Break



Click [here](#) for the 3D model.

Dimensions

| | |
|---|----------|
| L | 31mm NOM |
| W | 14mm NOM |

Packaging Specifications

| | |
|--------------------------|------|
| Packaging Quantity | 100 |
| Typical Component Weight | 15 g |

General Information

| | |
|-------------|---|
| Series | TRS-P |
| Type | Thermal Reed Switch |
| Style | Screw-In |
| Description | Thermal Reed Switch |
| Features | High Reliability, High-Speed Response, Long Operational Life, Excellent Environmental Durability, High Temperature Accuracy |
| RoHS | Yes |
| REACH | Yes |

Specifications

| | |
|-----------------------------|--|
| Switching Temperature | 95C +/-3C |
| Temperature Range | -20/+130°C |
| Contact Type | Break |
| Voltage DC | 100 VDC MAX (Opening/Closing) |
| Current | 0.5 Amps DC MAX (Opening/Closing), 5 mAmps MIN (1VDC, Opening/Closing) |
| Resistance | 500 mOhms MAX (Contact Resistance) |
| Max Opening/Closing Power | 10 W (DC) |
| Max Opening/Closing Voltage | 100 V (DC) |
| Differential Temperature | 10C Maximum |