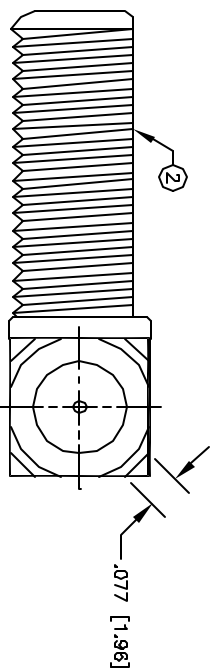
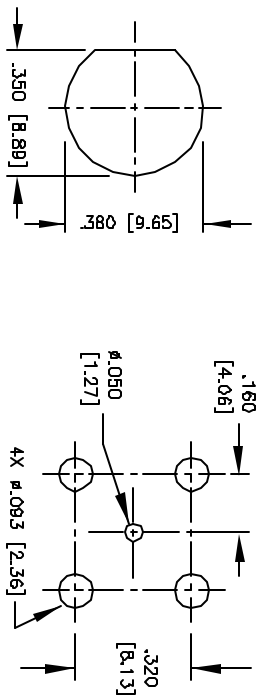
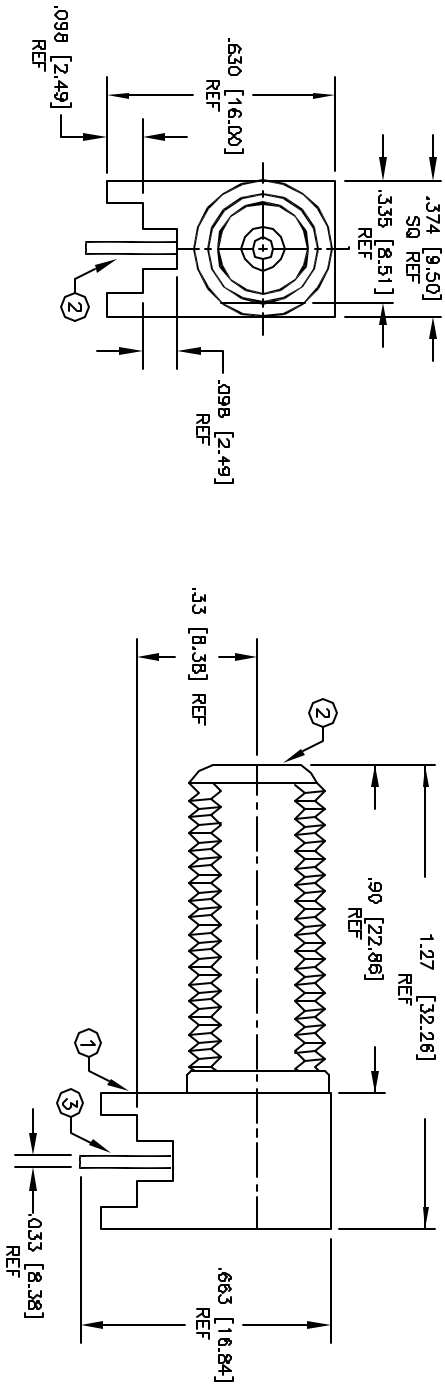


© COPYRIGHT 1997 BY SPC TECHNOLOGY. ALL RIGHTS RESERVED. NO PORTION OF THIS PUBLICATION, WHETHER IN WHOLE OR IN PART CAN BE REPRODUCED WITHOUT THE EXPRESS WRITTEN CONSENT OF SPC TECHNOLOGY.

REVISIONS			DDC. NO. SPC-FD05, Total Pages: 2
DCP #	REV	DESCRIPTION	Effective: 3/3/97, DCP No: 103 Supersedes DCP No: 97
264	B	ADD CENTER DIMENSION	8/28/97 JJC 8/28/97 JJC 8/28/97 JJC
428	C	CHANGE ELECTRONIC FILE NAME	2/12/98 JJC 2/17/98 JJC 2/17/98 JJC



SUGGESTED MOUNTING CONFIGURATION

**SPECIFICATIONS:**

IMPEDANCE: 75 OHMS

ITEM	DESCRIPTION	QTY	MATERIAL	FINISH
7	CENTER PIN	1	BRASS	TIN
8	DIELECTRIC	1	POLYPROPYLENE	NONE
5	DIELECTRIC	1	POLYPROPYLENE	NONE
4	DIELECTRIC	1	POLYPROPYLENE	NONE
3	CONTACT	1	PHOS BRONZE	TIN
2	BODY	1	BRASS	NICKEL
1	BASE	1	BRASS	NICKEL

**MISCELLANEOUS**  
 ALL DIMENSIONS AND TECHNICAL INFORMATION CONTAINED HEREIN ARE BASED UPON INFORMATION AND/OR TESTS WE BELIEVE TO BE ACCURATE AND RELIABLE. SPC'S CONDITIONS OF USE ARE THE BASIS FOR THE CONTRACT. THE USER SHALL DETERMINE THE SUITABILITY OF THE PRODUCT FOR THE INTENDED USE AND ASSUME ALL RISK AND LIABILITY WHATSOEVER IN CONNECTION THEREWITH.



DRAWN BY: DANIEL CAREY		DATE: 4/3/97	
CHECKED BY: JOHN COLE		DATE: 4/8/97	
APPROVED BY: BRETT BRAATZ		DATE: 4/16/97	
DRAWING TITLE: F CONNECTOR, FEMALE, PCB MOUNT, RIGHT ANGLE			
SIZE: A	DWG. NO.: SPCF23PC-RA	CAD FILE: 89N1549.DWG	REV: C
SCALE: NTS	U.O.M.: INCHES [mm]	SHEET: 1	OF 1

DIMENSIONS ARE FOR REFERENCE PURPOSES ONLY.