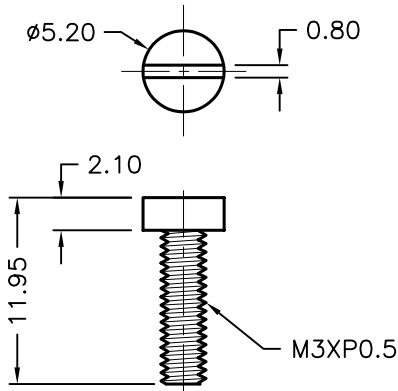


REVISIONS

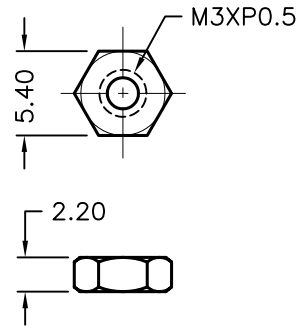
DCP #	REV	DESCRIPTION	DRAWN	DATE	CHECKD	DATE	APPRVD	DATE
1876	A	RELEASED	EO	05/23/06	TL	06/07/06	HO	06/07/06



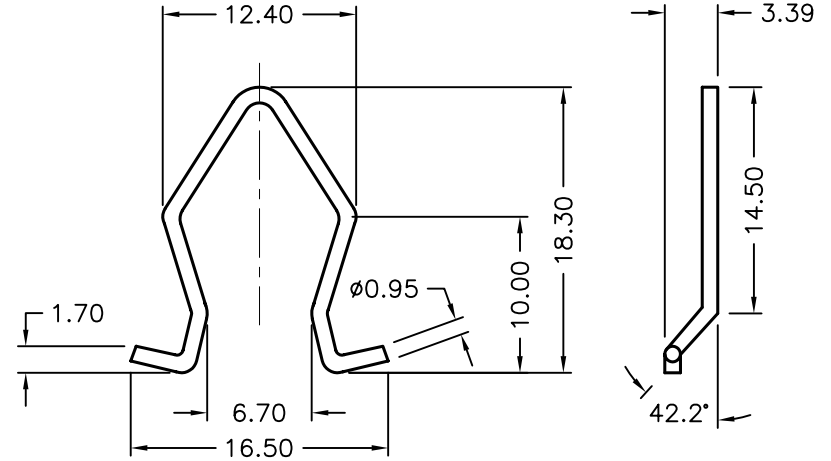
RoHS Compliant



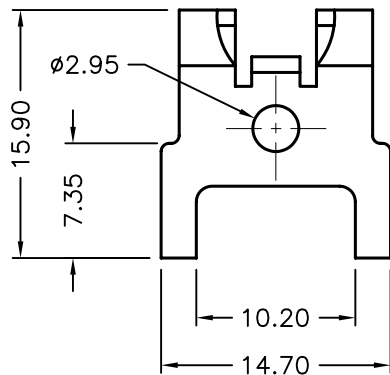
Slot Screw (4PCS)
Material: Steel, Nickel-Plated



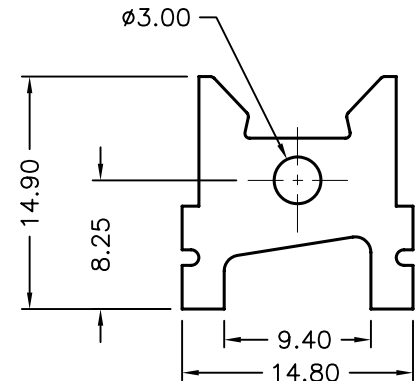
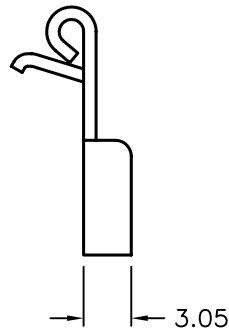
Hex Nut (4PCS)
Material: Steel, Nickel-Plated



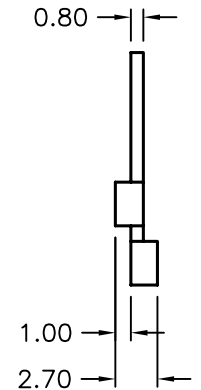
Spring Latch (2PCS)
Material: Stainless Steel



Latch Post (2PCS)
Material: Steel 0.8t, Nickel-Plated



Bail Post (2PCS)
Material: Steel 0.8t, Nickel-Plated



DISCLAIMER:
ALL STATEMENTS AND TECHNICAL INFORMATION CONTAINED HEREIN ARE BASED UPON INFORMATION AND/OR TESTS WE BELIEVE TO BE ACCURATE AND RELIABLE. SINCE CONDITIONS OF USE ARE BEYOND OUR CONTROL, THE USER SHALL DETERMINE THE SUITABILITY OF THE PRODUCT FOR THE INTENDED USE AND ASSUME ALL RISK AND LIABILITY WHATSOEVER IN CONNECTION THEREWITH.

TOLERANCES:
Unless Otherwise Specified
.X ±0.2 [0.008]
.XX ±0.12 [0.005]

DRAWN BY:	DATE:
EKLAS ODISH	05/23/06
CHECKED BY:	DATE:
THOMAS LEE	06/07/06
APPROVED BY:	DATE:
HISHAM ODISH	06/07/06

DRAWING TITLE: SPRING LATCH LOCK, RoHS COMPLIANT			
SIZE A	DWG. NO. SPC15378	ELECTRONIC FILE 79K4962.DWG	REV A
SCALE: NTS	U.O.M.: mm [INCHES]	SHEET: 1 OF 1	