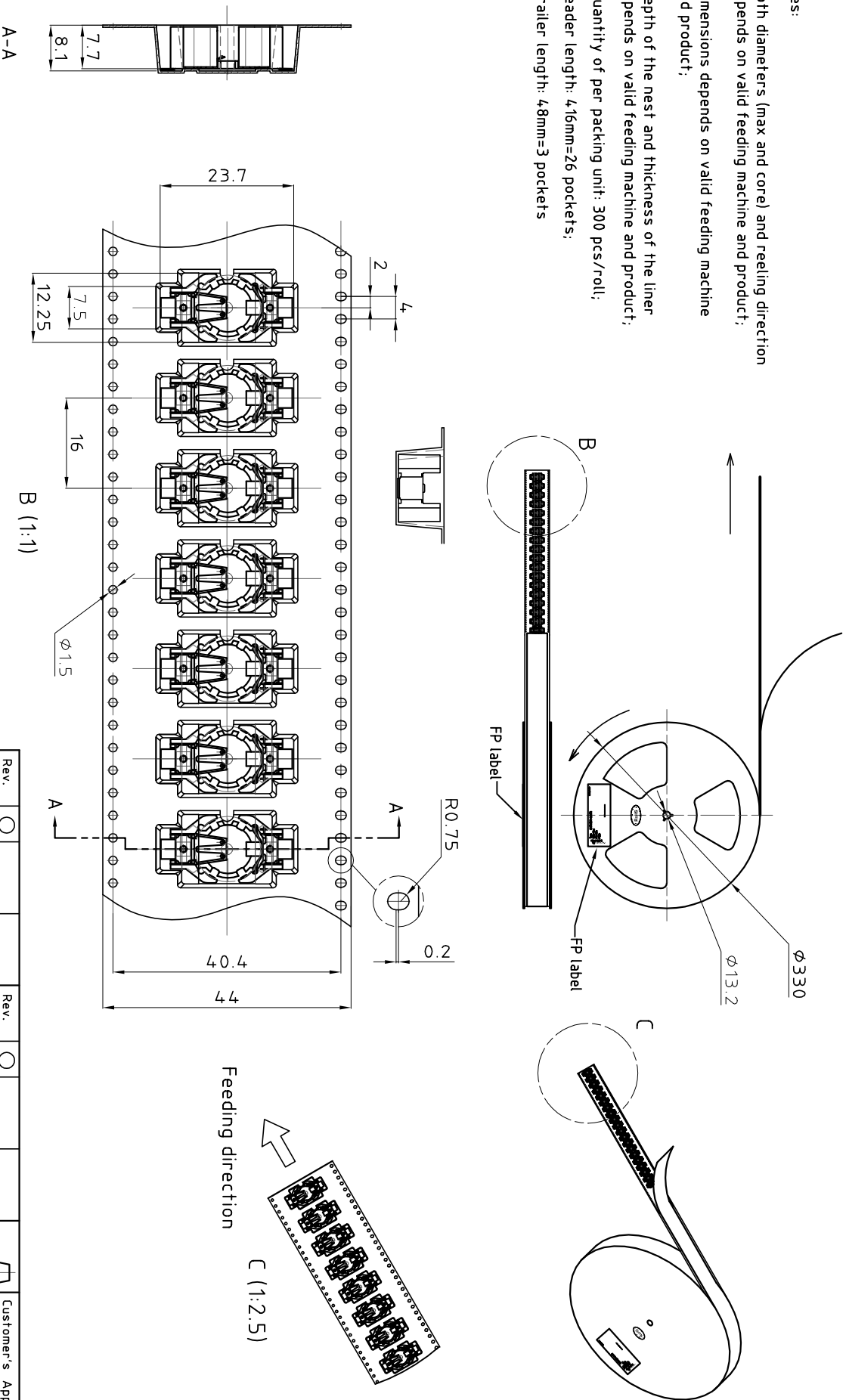


- Dimensions and tolerances can be specified only after the testing of the devices for the mass production definitely

Notes:

1. Both diameters (max and core) and reeling direction depends on valid feeding machine and product;
2. Dimensions depends on valid feeding machine and product;
3. Depth of the nest and thickness of the liner depends on valid feeding machine and product;
4. Quantity of per packing unit: 300 pcs/roll;
5. Leader length: 4.16mm=26 pockets;
6. Trailer length: 48mm=3 pockets



- Samples can deviate in the execution from the serie.

Rev.	○	Rev.	○	Customer's Approval
Rev.	○	Rev.	○	Date
Rev.	○	Rev.	○	Signature

Titel: Tape & Reel

SMTU357-LF. TR

Scale 1:10

Drawn 14.04.10 Wu Ping
Checked 17.09.10 RKI
Approved

renata batteries

CH-4452 Itingen
Switzerland

10.0483.3-