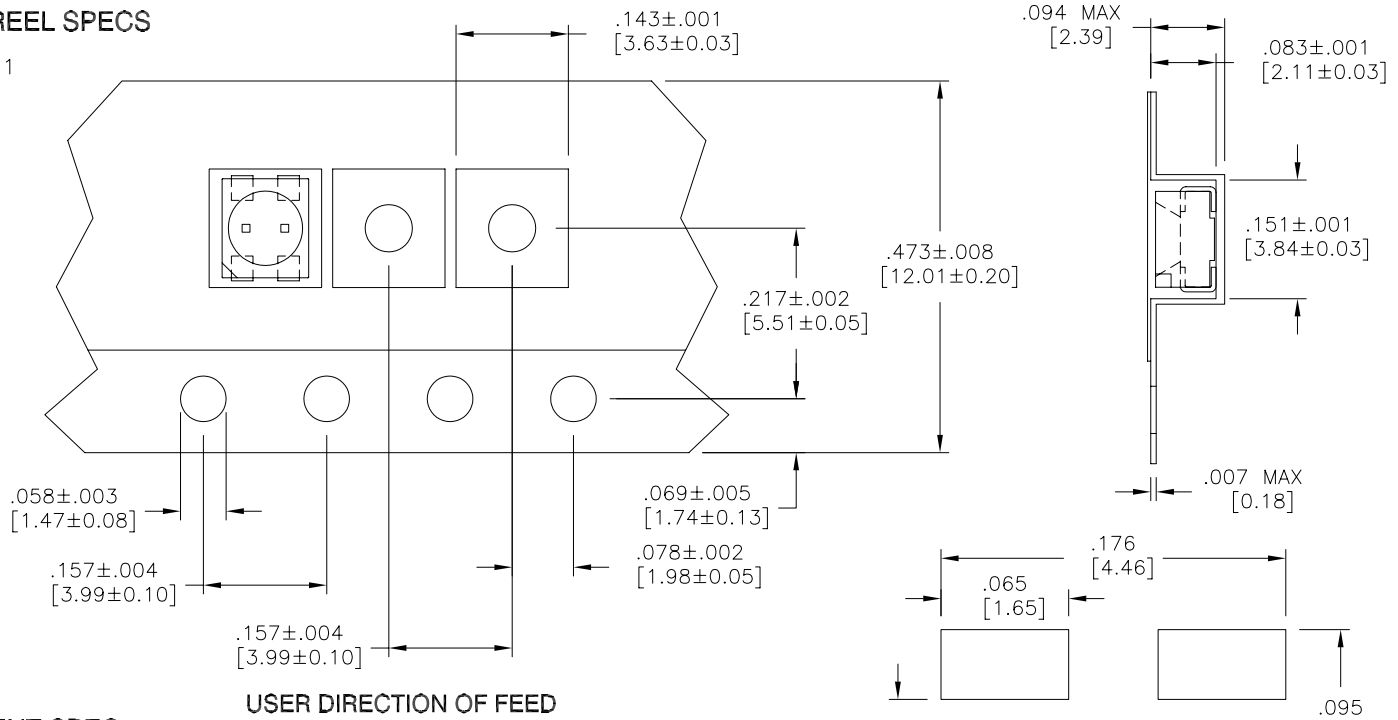


Actual Size

LTR	REVISION	DATE	APPD
-	RELEASE	05-30-07	-

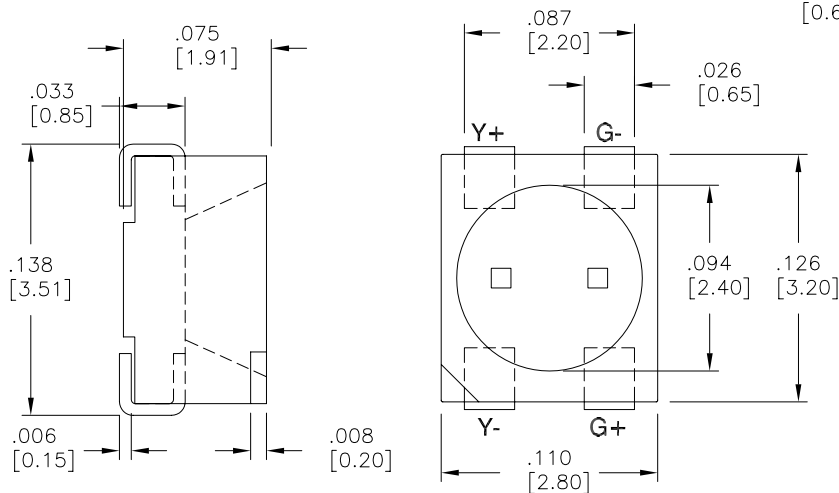
TAPE & REEL SPECS

SCALE: 4:1

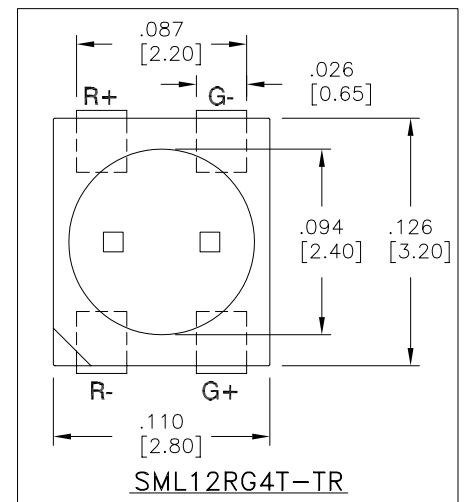


COMPONENT SPEC.

SCALE: 10:1



RECOMENDED PAD SIZE
ROTATED AT 90°



NOTES:

- 7 INCH REEL - 1500 PIECES PER REEL
- ALL DIMS ARE IN INCHES (MILLIMETERS).
- TOLERANCE IS ±.0004" (±0.10mm) UNLESS OTHERWISE SPECIFIED.
- SPECIFICATIONS ARE SUBJECT TO CHANGE WITHOUT NOTICE.
- LEADS TO BE SOLDERABLE AND CAPABLE OF MEETING THE SOLDERABILITY REQUIREMENTS OF MIL-STD-202, METHOD 208.
- MANUFACTURE DATE SHALL NOT BE OLDER THAN 26 WEEKS.
- TAPE AND REEL TO BE IN ACCORDANCE WITH STANDARD EIA-481-A

LEDTRONICS PART NO.	L.E.D. RADIATION COLOR	L.E.D. APPEARANCE	ABSOLUTE MAXIMUM RATINGS (Ta=25°C)					ELECTRO-OPTICAL CHARACTERISTICS (Ta=25°C)										
			Pd mW	I _{fp} mA	I _f mA	V _r V	T _{opr} (°C)	I _f mA	I _v mcd typ	V _f =V typ/max	VIEW ANGLE 201/2	I _r max μA	C	Δλ nm	λ _D nm	λ _P nm	X	Y
SML12YG4T-TR	YELLOW	WATER CLEAR	75	30	140	5	-40°C TO +85°C	20	14	2.1/2.5	120	10	20	36	588	587	0.55	0.44
	GREEN	WATER CLEAR	62.5	25	140	5	-40°C TO +85°C	20	24	2.2/2.5	120	10	15	29	570	565	0.45	0.54

LEAD SOLDERING TEMP: [1.6mm (.063in) FROM BODY] 250°C FOR 5 SEC.

LED[®]
LEDTRONICS,™ INC.
23105 KASHIWA COURT
TORRANCE, CA 90505

-PROPRIETARY-
This document contains Proprietary information of LEDTRONICS,™ INC. It may not be copied, used or disclosed for any purpose without the prior express written consent of LEDTRONICS,™ INC.
 .XXX ± .010 (TOLERANCE PER ANSI-Y14.5)
 .XX ± .025 (UNLESS OTHERWISE STATED)
 ANGLES ± 0°,30'
 FRACT. ± 1/32

TITLE SML12YG4T-TR							
DWG NO DSTR0255		SCALE NONE		SHEET 1 OF 1		DATE 05-30-07	
CODE IDENT NO. 8Z410	DWG BY SK	CHK BY QA	MFG	CUSTOMER			