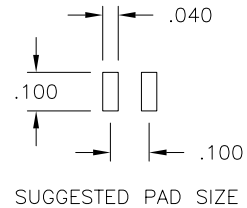
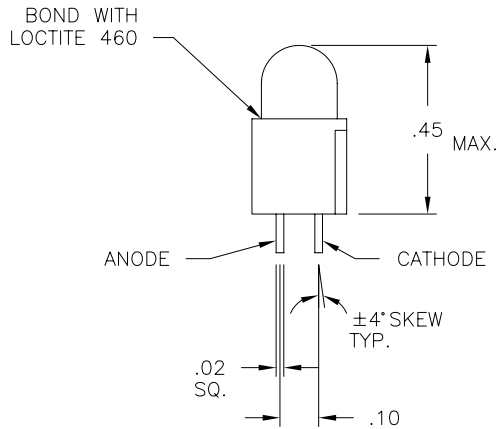
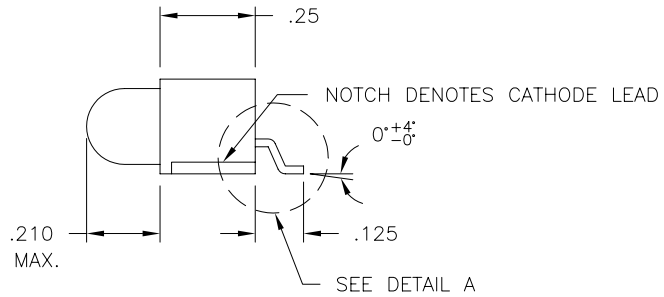
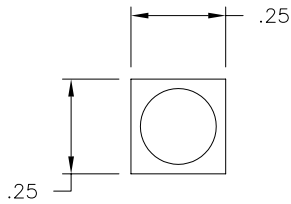
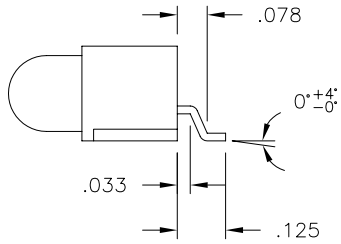


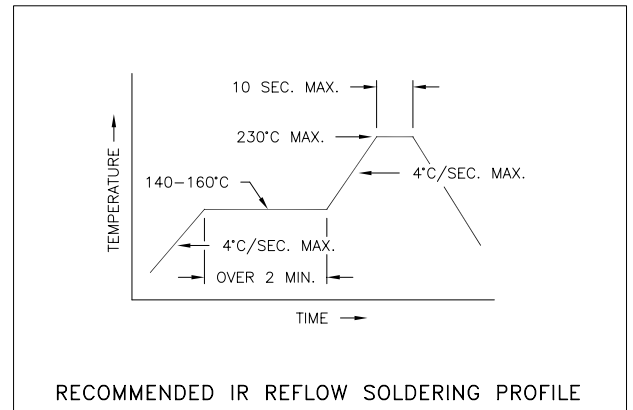
LTR	REVISION	DATE	APPD
-	DWG NO WAS SSM200HT	05-20-97	JH
A	RSVD PER ECR 030800-JH01	05-19-00	CM
B	RSVD PER ECR 032102-JH01	03-21-02	JCH

DETAIL A



**TEST REQUIREMENTS:**

1. TEST FOR COLOR AND POLARITY
2. ELECTRICAL TEST IN ACCORDANCE WITH P/N DESIGNATION.
3. FINAL WEIGHT/COUNT OF ALL PARTS.



LEDTRONICS PART NO.	LEDTRONICS L.E.D. USED	L.E.D. RADIATION COLOR	ABSOLUTE MAXIMUM RATINGS (Ta=25°C)					ELECTRO-OPTICAL CHARACTERISTICS (Ta=25°C)					
			Pd mW	Ifp mA	If mA	Vr V	Topr (°C)	If mA	Iv mcd min/typ	Vf=V typ/max	VIEW ANGLE	Ir max μA	λP nm
SM200TR6A-HT	L200TR6A	ULTRA RED	100	200	40	4	-55°C TO 100°C	20	25/50	1.8/2.4	50	100	660
SM200TR5A-HT	L200TR5A	HI-EFF. RED	100	120	30	5	-55°C TO 100°C	20	11/38	2.0/2.8	50	100	635
SM200TY5A-HT	L200TY5A	YELLOW	80	80	20	5	-55°C TO 100°C	20	8/25	2.2/2.8	50	100	585
SM200TG5A-HT	L200TG5A	HI-EFF. GREEN	120	120	40	5	-55°C TO 100°C	20	8/25	2.2/2.8	50	100	565

**LED**<sup>®</sup>  
**LEDTRONICS, INC.**<sup>™</sup>  
 23105 KASHIWA COURT  
 TORRANCE, CA 90505

**-PROPRIETARY-**  
 This document contains Proprietary information of LEDTRONICS, INC. It may not be copied, used or disclosed for any purpose without the prior express written consent of LEDTRONICS, INC.  
 .XXX ± .010 TOLERANCE PER ANSI-Y14.5  
 .XX ± .025 (UNLESS OTHERWISE STATED)  
 ANGLES ± 0°,30'  
 FRACT. ± 1/32

TITLE <b>SM200TX5A-HT</b>			
DWG NO SDPC0221	SCALE 2:1	SHEET 1 OF 1	DATE 05-20-97
CODE IDENT NO. 8Z410	DWG BY JCH	CHK BY JCH	QA MFG 03-21-0203-21-02