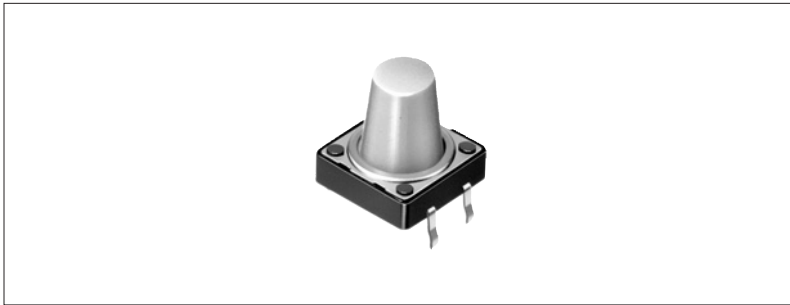


# 12mm Square Long Stem Type TACT Switch

SKHK Series

Long stem type with height of 12mm for a stable operational feel.



Lead Free

## Features

- Stem height: 12mm.
- Snap-in type, can be mounted directly on PC board.
- Some of output terminals can be also used as jumper leads, thus making circuit arrangement easy.

## Applications

- All types of electronic control systems in audio products, business machines, communication equipment, measuring instruments, TV sets, VCRs, etc.

## Products Line

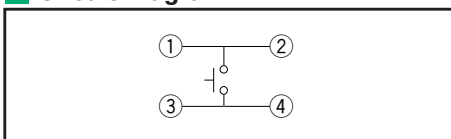
Products No.	Operating force	Operating direction	Travel (mm)	Rating (max.)	Operating life (5mA 5V DC)	Initial contact resistance	Stem color	Minimum packing unit (pcs.)
SKHKAAA010	1.27N	Vertical	0.3	50mA 12V DC	500,000 cycles	100mΩ max.	Light gray	1,000

## Dimensions

Unit : mm

Style	PC board mounting hole dimensions (Viewed from switch mounting face)

## Circuit Diagram



## Note

Using a 1.6mm thick PC board is recommended.

For detailed specifications, see P.395  
For soldering conditions, see P.396

Power

Push

Slide

Rotary

Encoders

Jog Shuttle

Telephone-hook

Detector

Vibration/Tilt Sensors

Dual-in-line Package Type

Multi Control Devices

TACT

Sharp Feeling

Soft Feeling

Snap-in Type

Surface Mount Type

Radial Type