



Amphenol Pcd is one of the world's leading suppliers of interconnect products for Military, Commercial Aerospace and Industrial applications. Located north of Boston in Beverly, Massachusetts, the company designs and manufactures a wide range of products; System Attachments, Junction Modules, Relay Sockets, Terminal Blocks, Rectangular & Circular Connectors, Cable Assemblies and Adapters. Each product is made and engineered with the highest quality standards in the industry. With facilities in North America and Asia, Amphenol Pcd products are chosen by thousands of OEMs around the world, reliant on Amphenol's technical excellence, global network of distributors, and cost-effective solutions for custom systems.

## Amphenol Pcd

72 Cherry Hill Dr. • Beverly, MA, 01915  
978.624.3400 • [info@amphenolpcd.com](mailto:info@amphenolpcd.com)  
[www.amphenolpcd.com](http://www.amphenolpcd.com)

# Pegasus Series

Amphenol Pcd is pleased to announce the availability of our latest innovation in light weight aerospace connection systems, The Pegasus Series. These twist & lock, "scoop-proof" connectors provide the same convenience and weight savings of the Luminus Series, with the added benefit of EMI shielding and protection from ambient noise transients.

EMI shielding is provided by an electroless copper and nickel plate, and a copper alloy spring finger gasket. Tests show greater than 50db of attenuation for low end signals (<100Mhz) and greater than 40db of attenuation for high end signals (<1Ghz). This level of isolation makes Pegasus Series the ideal choice for AC wash lighting, fluorescent lighting, switching power supply systems, and inter-system connectivity signal paths, where protection against ambient noise transients is required. (DO-160G Section 21 categories B, L and M and DO-160G Section 20 categories S & T).

All existing Luminus Series configurations will be available in the Pegasus Series. As of November 2014, Samples are available in the 8-pin, 12-pin, and 25-pin configurations.

## Features & Benefits

### *Electroless Copper & Nickel plating*

Enables EMI shielding from ambient noise transients

### *1/4 turn bayonet style connection*

Makes wire installation and maintenance easy and efficient

### *Interfacial and Triple-Barrier Seal*

Enables environmental sealing (IP 67 rating)

### *Multiple Options*

Many sizes, colors, and configurations to choose from

### *Scoop-Proof*

Prevents contacts from being bent or electrically shorted during mating

## Accessories

\*Custom Configurations Available

Self-Adhesive  
Cradle



Screw Mount  
Cradle with Screw



One-Sided  
Strain Relief



90°, 45°, Straight  
Backshells



## Receptacles

Inline



Inline  
Rectangular Flange



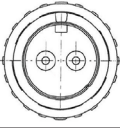
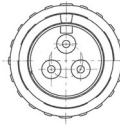
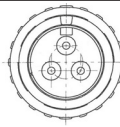
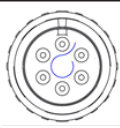
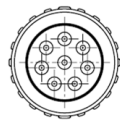
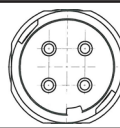
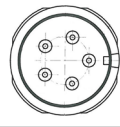
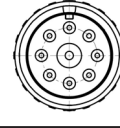
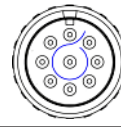
Panel Circular  
Flange


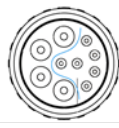
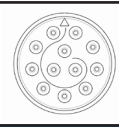



# Materials & Specifications

	Twist & Lock
<b>Materials</b> (Custom Material Available)	Insulator Body: Ultem / Polyetherimide
	Grommet & Face Seal: Silicone Rubber
	Contact Retainer: Stainless Steel
	Contacts: Copper Alloy, Selective Gold Plated
	Plating: Nickel over Copper
<b>Temperature Range</b>	-65° C to 175° C
<b>Temperature Life</b>	500 hours @ 85° C
<b>Insulation Resistance</b>	5000 MΩ Min. @ 500 VDC
	1500 VAC, 60 Hz @ Sea Level, 1ma
	300 VAC, 60 Hz @ 70,000 ft, 2ma
<b>Dielectric Withstanding</b>	300 VAC, 60 Hz @ 100,000 ft, 2ma
	min 100 mating cycles; 250 typical
<b>Durability</b>	min 100 mating cycles; 250 typical
<b>Altitude Immersion</b>	5% salt solution, 75k feet
<b>Temperature Cycling</b>	5(1) Hour Cycles: -65° C to 125° C
<b>Thermal Shock</b>	-65° C to 200° C
<b>Vibration</b>	30G Sinusoidal; 43.96G Random
<b>Shock</b>	300G, 3msec, Half-Sine
<b>Housing Electrical Conductivity</b>	6 milliohm
<b>EMI Shielding Effectiveness</b>	65db @ 100Mhz
	60db @ 200Mhz
	55db @ 300Mhz
	55db @ 400Mhz
	45db @ 800Mhz
	45db @1Ghz
<b>Salt Spray</b>	5% Salt Spray @ 95° C for 48 Hours
<b>Humidity</b>	10 Days @ 25° C to 65° C, 90% - 95% RH
<b>Fluid Immersion</b>	Lubricating Oil per Mil-Prf-7808
	Cleaning Compound per Mil-Prf-87937, Alkaline Base
	Isopropyl Alcohol & Mineral Spirit Solution
	Skydrol Hydraulic Fluid
	Hydraulic Fluids per MIL-PRF-83282 MIL-PRF-87257
	Ethylene Glycol
	Propylene Glycol
	Aviation Jet A
<b>Seal Rating</b>	IP67
<b>Flammability</b>	UL94, V0.
	DOTG section 26.6.2 & 26.6.3
	FAR Part 25 App F Part I
<b>RoHS &amp; REACH Compliance</b>	Yes
<b>Insertion &amp; Removal Force</b>	less than 3 lbs
	less than 5 lbs insert (sz22)
	less than 4lb remove (sz22)
	less than 12lbs insert (sz 16)
	less than 12lbs remove (sz 16)
<b>Contact Retention</b>	greater than 10lbs
	less than 10lbs, sz 22
	less than 25lbs, sz 16
<b>Coupling Torque</b>	less than 5lbs

# Shell Sizes

<b>05 (max dia: 0.318)</b>
2, size 22 Twist & Lock

3, size 22 Twist & Lock

<b>07 (max dia: 0.448)</b>
3, size 20 Twist & Lock

6, size 22 Twist & Lock

8, size 22 Twist & Lock

<b>08 (max dia: 0.528)</b>
4, size 16 Twist & Lock

5, size 22 Twist & Lock

9: 1, size 16; 8 size 22 Twist & Lock

9, size 22 Twist & Lock


<b>10 (max dia: 0.630)</b>
9: 4, size 16; 5 size 22 Twist & Lock

10: 4, size 16; 6 size 22 Twist & Lock

<b>11 (max dia: 0.700)</b>
12, size 22 Twist & Lock

<b>14 (max dia: 0.875)</b>
25, size 22 Twist & Lock


# Part Numbering (Twist & Lock)

## Plugs

Part Number	Type	Color	Contact Qty	Contact Size	Shell Size	Mating Half	Self-Adh Cradle	Screw Mount Cradle	Strain Relief
SJS830250P	inline	black	2	22	5	SJS830270P	SJS257000	n/a	n/a
SJS830210P	inline	black	3	22	5	SJS830230P	SJS257000	n/a	n/a
SJS840310P	inline & panel mount (circ)	white	3	16	8	SJS840300P/320P	SJS445000	SJS450100	n/a
SJS840340P	panel alt key (circ)	black	3	16	8	SJS840330P/350P	SJS445000	SJS450100	n/a
SJS840410P	inline	white	4	16	8	SJS840400P	SJS445000	SJS450100	n/a
SJS860510P	inline & panel mount (circ)	white	5	22	8	SJS860500P/520P	SJS445000	SJS450100	n/a
SJS870510P	panel mount (circ)	white	5	22	8	SJS870520P	SJS445000	SJS450100	n/a
SJS861700P	inline	black	6	22	7	SJS861800P	SJS883000	SJS450250	SJS450300
SJS830100P	inline & panel mount (sqr)	black	8	22	7	SJS830200P/220P	SJS883000	SJS450250	SJS450300
SJS830101P	inline & panel mount (sqr)	green	8	22	7	SJS830201P/221P	SJS883000	SJS450250	SJS450300
SJS830102P	inline & panel mount (sqr)	yellow	8	22	7	SJS830202P/222P	SJS883000	SJS450250	SJS450300
SJS860100P	inline	white	9	16/22	8	SJS860200P	SJS445000	SJS450100	n/a
SJS860910P	inline	white	9	16/22	10	SJS860900P	SJS991000	n/a	n/a
SJS862100P	inline	black	9	22	8	SJS862200P	SJS445000	SJS450100	n/a
SJS861100P	inline	white	10	16/22	10	SJS861200P	SJS991000	n/a	n/a
SJS861300P	inline	white	12	22	8	SJS861400P	SJS445000	SJS450100	n/a
SJS862300P	inline	white	3	20	7	SJS862400P	SJS883000	SJS450250	SJS450300
SJS425110P	inline	black	25	22	14	SJS425120P	n/a	n/a	n/a
SJS112110P	inline	black	12	22	11	SJS112120P	n/a	n/a	n/a

\*All part numbers shown, no contacts.

## Receptacles

Part Number	Type	Color	Contact Qty	Contact Size	Shell Size	Mating Half	Self-Adh Cradle	Screw Mount Cradle	Strain Relief
SJS830270P	inline	black	2	22	5	SJS830250P	SJS257000	n/a	n/a
SJS830230P	inline	black	3	22	5	SJS830210P	SJS257000	n/a	n/a
SJS840300P	inline	white	3	16	8	SJS840310P	SJS445000	SJS450100	n/a
SJS840350P	inline alt key	black	3	16	8	SJS840340P	SJS445000	SJS450100	n/a
SJS840320P	panel mount (circ)	white	3	16	8	SJS840310P	SJS445000	SJS450100	n/a
SJS840330P	panel mount alt key (circ)	black	3	16	8	SJS840340P	SJS445000	SJS450100	n/a
SJS840400P	inline	white	4	16	8	SJS840410P	SJS445000	SJS450100	n/a
SJS860500P	inline	white	5	22	8	SJS840510P	SJS445000	SJS450100	n/a
SJS860520P	panel mount (circ)	white	5	22	8	SJS840510P	SJS445000	SJS450100	n/a
SJS870520P	panel mount (circ)	white	5	22	8	SJS870510P	SJS445000	SJS450100	n/a
SJS861800P	inline	black	6	22	7	SJS861700P	SJS883000	SJS450250	SJS450300
SJS830200P	inline	black	8	22	7	SJS830100P	SJS883000	SJS450250	SJS450300
SJS830201P	inline alt key	green	8	22	7	SJS830101P	SJS883000	SJS450250	SJS450300
SJS830202P	inline alt key	yellow	8	22	7	SJS830102P	SJS883000	SJS450250	SJS450300
SJS830220P	panel mount (sqr)	black	8	22	7	SJS830100P	n/a	n/a	n/a
SJS830221P	panel mount (sqr)	green	8	22	7	SJS830101P	n/a	n/a	n/a
SJS830222P	panel mount (sqr)	yellow	8	22	7	SJS830102P	n/a	n/a	n/a
SJS860200P	inline	white	9	16/22	8	SJS860100P	SJS445000	SJS450100	n/a
SJS860900P	inline	white	9	16/22	10	SJS860910P	SJS991000	n/a	n/a
SJS862200P	inline	black	9	22	8	SJS862100P	SJS445000	SJS450100	n/a
SJS861200P	inline	white	10	16/22	10	SJS861100P	SJS991000	n/a	n/a
SJS861400P	inline	white	12	22	8	SJS861300P	SJS445000	SJS450100	n/a
SJS862400P	inline	white	3	20	7	SJS862300P	SJS883000	SJS450250	SJS450300
SJS425120P	inline	black	25	22	14	SJS425110P	n/a	n/a	n/a
SJS425160P	jamnut	black	25	22	14	SJS425110P	n/a	n/a	n/a
SJS112120P	inline	black	12	22	11	SJS112110P	n/a	n/a	n/a
SJS112160P	jamnut	black	12	22	11	SJS112110P	n/a	n/a	n/a
SJS708170P	inline, oval flange	black	8	22	7	SJS830100P	n/a	n/a	n/a
SJS708190P	jamnut panel mount	black	8	22	7	SJS830100P	n/a	n/a	n/a

## Part Numbering (Accessories)

Part Number	Series	Color	Length (in)	Height (in)	Weight (g)	Shell Size
SJS257000	Self-Adhesive Cradle	Black	1.033	0.645	2.5	5
SJS445000	Self-Adhesive Cradle	White	1.031	0.701	2.7	8
SJS883000	Self-Adhesive Cradle	Black	1.031	0.701	2.7	7
SJS991000	Self-Adhesive Cradle	White	1.031	0.846	2.8	10
SJS450100	Screw Mount Cradle	Black	1.033	0.982	3.3	8
SJS450250	Screw Mount Cradle	Black	1.033	0.976	3.9	7
SJS450300	Strain Relief	Black	0.95	0.539	0.6	7
SJS450400	Strain Relief	Black	1.00	0.685	0.8	SJS8201xx & SJS8202xx
SJSA5v000	Concave Base Cradle	Black	1.03	0.766	2.2	5
SJSA7v000	Concave Base Cradle	Black	1.03	0.9	2.3	7
SJSA8v000	Concave Base Cradle	Black	1.03	0.961	2.4	8
SJSA0v000	Concave Base Cradle	Black	1.03	1.059	2.6	10

## Contact Matrix

Contact Size	Contact Style	Available	Contact P/N		QPL Part No. (Machined Only)	Contact Retention	Crimp Tensile Strength
			Machined	Stamped & Formed			
16	Pin	Yes	CNP058364	SCP058364	M39029/58-364	.012" [0,30mm] @ 25lbf [111N]	40lbf [180N]
	Socket	Yes	CNS057358	SCS057358	M39029/57-358		
	Socket-L	No	CNS056352	n/a	M39029/56-352		
20	Pin	Yes	CNP058363	SCP058363	M39029/58-363	.012" [0,30mm] @ 20lbf [90N]	20lbf [90N]
	Socket	Yes	CNS057357	SCS057357	M39029/57-357		
	Socket-L	No	CNS056351	n/a	M39029/56-351		
22D	Pin	Yes	CNP058360	n/a	M39029/58-360	.012" [0,30mm] @ 10lbf [44N]	10 lbf [45N]
	Socket	Yes	CNS057354	n/a	M39029/57-354		

Contact Size	Wire Accommodations				Tool Information		
	Size (AWG)	Max Current Rating (A)	ØDD Range	Strip Length	Basic Tool	Positioner	Insertion/Removal Tool
16	16	13	.065 - .109" [1,65 - 2,77mm]	.209 - .240" [5,31 - 6,10mm]	M22520/1-01	M22520/1-04 (Blue)	M81969/14-03
	18	10			M22520/7-01		
	20	7.5			M22520/7-01		
20	20	7.5	.040 - .083" [1,02 - 2,11mm]	.209 - .240" [5,31 - 6,10mm]	M22520/1-01	M22520/1-04 (Red)	M81969/14-11
	22	5			M22520/2-01		
	24	3			M22520/7-01		
22D	22	5	.030 - .054" [0,76 - 1,37mm]	.141 - .172" [3,58 - 4,37mm]	M22520/2-01	M22520/2-06	M81969/14-01
	24	3					
	26	2					
	28	1.5					

# Amphenol Pcd Products



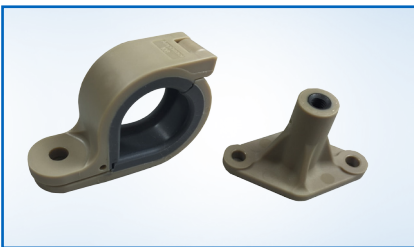
Backshells



Cable Solutions &  
Cable Adapters  
NEW



Relay Sockets



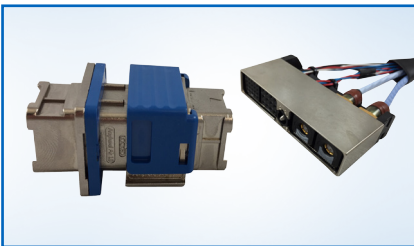
System  
Attachments



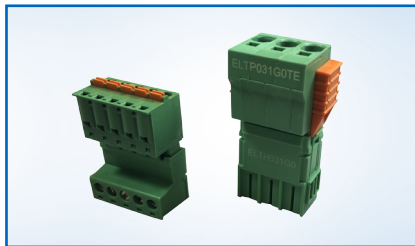
Luminus Series



Junction Modules



SIM



Terminal Blocks



Circular



Waterproof  
Solutions



Field Bus



Military Audio  
/Power