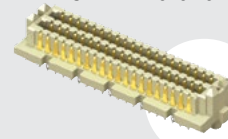


SEAMP-20-02.0-L-04



(1.27 mm) .050"

SEAMP SERIES

PRESS-FIT OPEN-PIN-FIELD ARRAY

SPECIFICATIONS

For complete specifications and recommended PCB layouts see www.samtec.com?SEAMP

Insulator Material:

Natural LCP

Contact Material:

Copper Alloy

Operating Temp Range:

-55 °C to +125 °C

Current Rating:

2.5 A per pin

(6 adjacent pins powered)

Plating:

Au or Sn over

50 μ" (1.27 μm) Ni

Working Voltage:

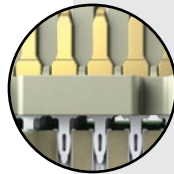
215 VAC

RoHS Compliant:

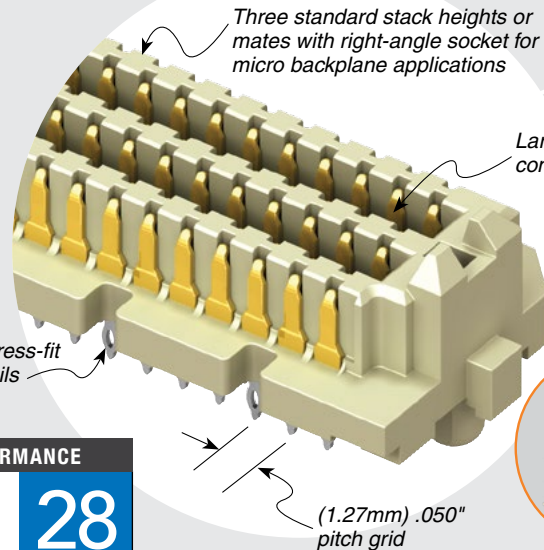
Yes

Mates with:

SEAF, SEAF-RA-GP



Press-fit tails



Large contact wipe

(1.40 mm) .055" NOMINAL WIPE

HIGH-SPEED CHANNEL PERFORMANCE

SEAMP/SEAF @ 7 mm Mated Stack Height

Rating based on Samtec reference channel. For full SI performance data visit Samtec.com or contact SIG@samtec.com

28
Gbps

PROCESSING

Application tooling and one ton minimum press required. Contact ATG@samtec.com for more information.

RECOGNITIONS

For complete scope of recognitions see www.samtec.com/quality



FILE NO. E111594

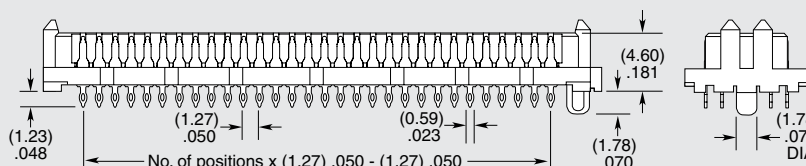
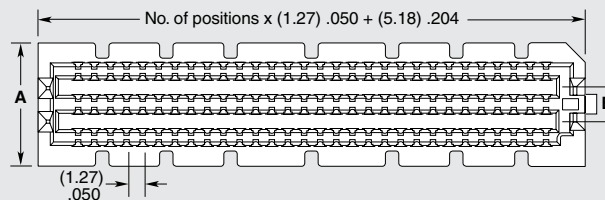
SEAMP	NO. OF POSITIONS PER ROW	02.0	PLATING OPTION	NO. OF ROWS	OPTION
SEAMP = Press-fit	-10, -20, -30, -40, -50		-L = 10 μ" (0.25 μm) Gold on contact area, Matte Tin on tail	-04 = Four Rows -06 = Six Rows -08 = Eight Rows -10 = Ten Rows	-GP = Guide Post (Mates with SEAF-RA-GP only) -TR = Tape & Reel

SEAMP LEAD STYLE	MATED HEIGHTS* SEAF LEAD STYLE		
	-05.0	-06.0	-06.5
-02.0	7 mm	8 mm	8.5 mm

*Processing conditions will affect mated height.

ALSO AVAILABLE (MOQ Required)

- Other plating options
 - 20 & 30 pins per row
 - 04 & 06 rows
- Contact Samtec.



NO. OF ROWS	A	B
-04	(7.06) .278	(2.54) .100
-06	(9.60) .378	(2.54) .100
-08	(12.14) .478	(5.08) .200
-10	(14.68) .578	(7.62) .300

Note:
Compliant pin fixture CAT-SEAMP-XX-XX. Patent Pending.

Due to technical progress, all designs, specifications and components are subject to change without notice.

WWW.SAMTEC.COM

All parts within this catalog are built to Samtec's specifications. Customer specific requirements must be approved by Samtec and identified in a Samtec customer-specific drawing to apply.