



Quality Products. Service Excellence.

Type 4X/ 6P Diecast Aluminum Enclosures 1590Z Series

Watertight, Thick Wall, UL Listed

Key Features:

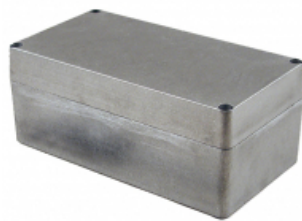


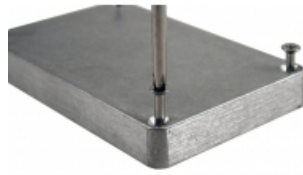
- Rugged, diecast aluminum alloy (tough yet easy to machine), electronic instrument enclosure.
- Two piece "tongue & groove" construction with a replaceable one-piece silicone rubber gasket provides protection against access of dust and water. Gasket supplied loose inside the enclosure (not pre-installed).
- Gasket has a temperature rating of -40C to +150C
- Ideal for repetitive opening and closing.
- Four recessed stainless steel machine screws secure lid into tapped holes.
- Easy to wall mount using "through box - blind hole" construction, outside of gasket protection.
- Lid screws are self capturing (lid holes are threaded with the first installation of lid screws). (NOTE: Except for **1590Z060**, **1590Z061**, **1590Z062**, and **1590Z063**)
- Designed to meet IP68.
- North American Mark of Safety - cUL & UL listed. Certified to Type 4, 4X, 6, 6P.
- All sizes except 1590Z060** carry an impact rating of IK08 per IEC62262
- 16ga galvanized steel inner panels are available for most sizes, and are sold separately (refer to table below).
- Painted versions are painted inside and out with a tough powder paint. Choice of textured black or smooth gray (RAL 7001).
- For non-metallic (glass reinforced polyester) versions of these enclosures, see series **1590ZGRP**



Photos

Available unfinished or powder coated in textured black or smooth gray.





Lid screws are self capturing (lid is threaded with first installation of screws)

Lid screws and wall mounting holes are outside the gasket channel.

Inner panels are available for most sizes and are sold separately.

Accessories

- Pole Mount Kit
- Breather Kit
- Liquid-Tight, Strain Relief Cordgrips
- Pressure Compensation Plug
- Small Rainproof Ventilator

Enclosure

Part Number	Color	Internal		Enclosure Depth			Lid		Extra Lid Screws	Inner Panel	Extra Panel Screws	Replacement Gasket
		Mounting Shelf	Length	Width	(Less Lid)	Thickness	Extra Lid Screws	Inner Panel				
1590Z060	Natural	NO	1.98	1.77	0.95	0.24	SC1550Z103-50		SCG060-50	1590Z060G		
1590Z060BK	Black	NO	1.98	1.77	0.95	0.24	SC1550Z103-50		SCG060-50	1590Z060G		
1590Z060GY	Grey	NO	1.98	1.77	0.95	0.24	SC1550Z103-50		SCG060-50	1590Z060G		
1590Z061	Natural	NO	2.51	2.29	1.03	0.39	SC1550Z103-50		SCG060-50	1590Z061G		
1590Z061BK	Black	NO	2.51	2.29	1.03	0.39	SC1550Z103-50		SCG060-50	1590Z061G		
1590Z061GY	Grey	NO	2.51	2.29	1.03	0.39	SC1550Z103-50		SCG060-50	1590Z061G		
1590Z100	Natural	YES	2.94	3.14	1.57	0.47	SC576-50	1590Z100PL	SCGM4-50	1590Z100G		
1590Z100BK	Black	YES	2.94	3.14	1.57	0.47	SC576-50	1590Z100PL	SCGM4-50	1590Z100G		
1590Z100GY	Grey	YES	2.94	3.14	1.57	0.47	SC576-50	1590Z100PL	SCGM4-50	1590Z100G		
1590Z110	Natural	NO	2.94	3.14	1.57	0.47	SC576-50		SCGM4-50	1590Z100G		
1590Z110BK	Black	NO	2.94	3.14	1.57	0.47	SC576-50		SCGM4-50	1590Z100G		
1590Z110GY	Grey	NO	2.94	3.14	1.57	0.47	SC576-50		SCGM4-50	1590Z100G		
1590Z062	Natural	NO	3.86	2.52	1.03	0.39	SC1550Z103-50		SCG060-50	1590Z062G		
1590Z062BK	Black	NO	3.86	2.52	1.03	0.39	SC1550Z103-50		SCG060-50	1590Z062G		
1590Z062GY	Grey	NO	3.86	2.52	1.03	0.39	SC1550Z103-50		SCG060-50	1590Z062G		
1590Z119	Natural	YES	4.80	4.72	2.36	0.80	SC564-12	1590Z119PL	SCGM6-20	1590Z119G		
1590Z119BK	Black	YES	4.80	4.72	2.36	0.80	SC564-12	1590Z119PL	SCGM6-20	1590Z119G		
1590Z119GY	Grey	YES	4.80	4.72	2.36	0.80	SC564-12	1590Z119PL	SCGM6-20	1590Z119G		
1590Z120	Natural	YES	4.90	3.15	1.75	0.61	SC1550Z107-50	1590Z120PL	SCGM4-50	1590Z120G		
1590Z120BK	Black	YES	4.90	3.15	1.75	0.61	SC1550Z107-50	1590Z120PL	SCGM4-50	1590Z120G		
1590Z120GY	Grey	YES	4.90	3.15	1.75	0.61	SC1550Z107-50	1590Z120PL	SCGM4-50	1590Z120G		
1590Z063	Natural	NO	5.89	2.51	1.03	0.39	SC1550Z103-50		SCG060-50	1590Z063G		
1590Z063BK	Black	NO	5.89	2.51	1.03	0.39	SC1550Z103-50		SCG060-50	1590Z063G		
1590Z063GY	Grey	NO	5.89	2.51	1.03	0.39	SC1550Z103-50		SCG060-50	1590Z063G		
1590Z160	Natural	YES	6.30	6.30	2.76	0.79	SC564-12	1590Z160PL	SCGM6-20	1590Z160G		
1590Z160BK	Black	YES	6.30	6.30	2.76	0.79	SC564-12	1590Z160PL	SCGM6-20	1590Z160G		
1590Z160GY	Grey	YES	6.30	6.30	2.76	0.79	SC564-12	1590Z160PL	SCGM6-20	1590Z160G		
1590Z130	Natural	NO	6.91	3.15	1.65	0.45	SC576-50		SCGM4-50	1590Z130G		
1590Z130BK	Black	NO	6.91	3.15	1.65	0.45	SC576-50		SCGM4-50	1590Z130G		
1590Z130GY	Grey	NO	6.91	3.15	1.65	0.45	SC576-50		SCGM4-50	1590Z130G		

Part Number	Color	Internal Mounting Shelf	Enclosure Depth			Lid		Extra Lid Screws	Inner Panel	Extra Panel Screws	Replacement Gasket
			Length	Width	(Less Lid)	Thickness					
1590Z135	Natural	NO	6.91	3.15	1.65	0.79	SC574-30		SCGM4-50	1590Z130G	
1590Z135BK	Black	NO	6.91	3.15	1.65	0.79	SC574-30		SCGM4-50	1590Z130G	
1590Z135GY	Grey	NO	6.91	3.15	1.65	0.79	SC574-30		SCGM4-50	1590Z130G	
1590Z150	Natural	YES	8.70	4.74	2.39	0.79	SC564-12	1590Z150PL	SCGM6-20	1590Z150G	
1590Z150BK	Black	YES	8.70	4.74	2.39	0.79	SC564-12	1590Z150PL	SCGM6-20	1590Z150G	
1590Z150GY	Grey	YES	8.70	4.74	2.39	0.79	SC564-12	1590Z150PL	SCGM6-20	1590Z150G	
1590Z155	Natural	YES	8.70	4.72	2.40	1.18	SC565-12	1590Z150PL	SCGM6-20	1590Z150G	
1590Z155BK	Black	YES	8.70	4.72	2.40	1.18	SC565-12	1590Z150PL	SCGM6-20	1590Z150G	
1590Z155GY	Grey	YES	8.70	4.72	2.40	1.18	SC565-12	1590Z150PL	SCGM6-20	1590Z150G	
1590Z231	Natural	YES	9.06	7.87	3.63	0.80	SC564-12	1590Z231PL	SCGM6-20	1590Z231G	
1590Z231BK	Black	YES	9.06	7.87	3.63	0.80	SC564-12	1590Z231PL	SCGM6-20	1590Z231G	
1590Z231GY	Grey	YES	9.06	7.87	3.63	0.80	SC564-12	1590Z231PL	SCGM6-20	1590Z231G	
1590Z140	Natural	YES	9.85	3.13	1.57	0.59	SC576-50	1590Z140PL	SCGM6-20	1590Z140G	
1590Z140BK	Black	YES	9.85	3.13	1.57	0.59	SC576-50	1590Z140PL	SCGM6-20	1590Z140G	
1590Z140GY	Grey	YES	9.85	3.13	1.57	0.59	SC576-50	1590Z140PL	SCGM6-20	1590Z140G	
1590Z162	Natural	YES	10.24	6.25	2.75	0.79	SC564-12	1590Z162PL	SCGM6-20	1590Z162G	
1590Z162BK	Black	YES	10.24	6.25	2.75	0.79	SC564-12	1590Z162PL	SCGM6-20	1590Z162G	
1590Z162GY	Grey	YES	10.24	6.25	2.75	0.79	SC564-12	1590Z162PL	SCGM6-20	1590Z162G	
1590Z235	Natural	YES	13.07	9.13	4.36	0.79	SC598-20	1590Z235PL	SCGM6-20	1590Z235G	
1590Z235BK	Black	YES	13.07	9.13	4.36	0.79	SC598-20	1590Z235PL	SCGM6-20	1590Z235G	
1590Z235GY	Grey	YES	13.07	9.13	4.36	0.79	SC598-20	1590Z235PL	SCGM6-20	1590Z235G	
1590Z166	Natural	YES	14.17	6.30	2.76	0.79	SC564-12	1590Z166PL	SCGM6-20	1590Z166G	
1590Z166BK	Black	YES	14.17	6.30	2.76	0.79	SC564-12	1590Z166PL	SCGM6-20	1590Z166G	
1590Z166GY	Grey	YES	14.17	6.30	2.76	0.79	SC564-12	1590Z166PL	SCGM6-20	1590Z166G	
1590Z164	Natural	YES	14.23	4.72	2.38	0.79	SC598-20	1590Z164PL	SCGM6-20	1590Z164G	
1590Z164BK	Black	YES	14.23	4.72	2.38	0.79	SC598-20	1590Z164PL	SCGM6-20	1590Z164G	
1590Z164GY	Grey	YES	14.23	4.72	2.38	0.79	SC598-20	1590Z164PL	SCGM6-20	1590Z164G	

Data subject to change without notice

© 2021. Hammond Manufacturing Ltd. All rights reserved.