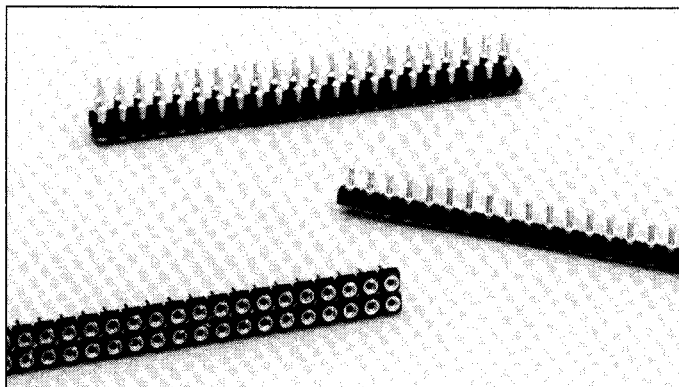
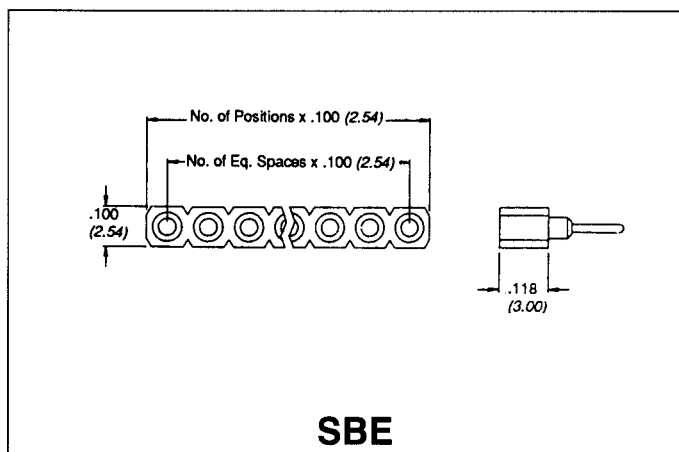


## SOCKET STRIPS

### SBE Series



- Precision screw machine sockets for high reliability and retention
- Notched body snaps to custom sizes (single row)
- 100% solder/flux proof
- Variety of pin sockets available to meet every board stacking application
- Hi temp IR compatible
- Press-fit options available



#### Materials:

**Body:** Black polyester, glass-filled  
**Contacts:** Beryllium Copper  
**Shell:** Half Hard Brass

#### Acceptable Pin Sizes:

**Diameter:** .016" - .021"  
**Length:**  
 CP, S, SL, E275 = .110" - .150" (2.79 - 3.81)  
 WA, WB = .110" - .165" (2.79 - 4.19)

#### Mounting Information:

**.018" DIA/.020" DIA. Pin:**  
 .030" ± .002" PCB Hole (.76 ± .05)  
**.025" Sq. Pin:**  
 .040" ± .002" PCB Hole (1.01 ± .05)  
**CP (Pressfit):**  
 .037" - .042" DIA Finished PTH (.93 - 1.07)

#### Performance Characteristics:

**Insertion Force:** 12 ounces\* max per contact  
**Withdrawal Force:** 1.5 ounces\* per contact  
 (After 12 insertions)  
 \*using .017" diameter pin

**Capacitance:** 1 picofarad maximum  
**Insulation Resistance:** 5000 megohms minimum  
**Dielectric Withstanding Voltage:** 500 volts AC  
**Current Rating:** 1 Ampere  
**Flammability:** UL 94V-0  
**Temperature Range:** -65°C to + 125°C

#### Agency Approvals:

#E73746

#### Plating Description:

**Suffix:** TG = 10 μinch (.254 μm) minimum  
 Gold on contact area.  
 100 μinch (2.54 μm) minimum  
 Tin/Lead on terminal area.

**\*TG30 =** 30 μinch (.762 μm) minimum  
 Gold on contact area.  
 200 μinch (5.08 μm) minimum  
 Tin/Lead on terminal area.

**TT =** 150 μinch (3.81 μm) minimum  
 Tin/Lead on contact area.  
 200 μinch (5.08 μm) minimum  
 Tin/Lead on terminal area.

All options include: 50 μinch (1.27 μm)  
 minimum Nickel underplate.

\*WB lead style available in TG30 plating only.

## How To Order SBE Series

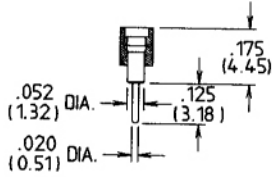
**SBE — XX 0 — XXX — XX**

Number of Contacts:  
01 thru 64

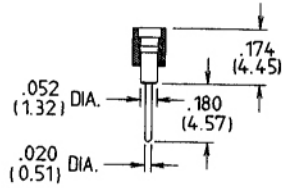
Lead Style

Plating Code:  
Specify TG, TG30, TT

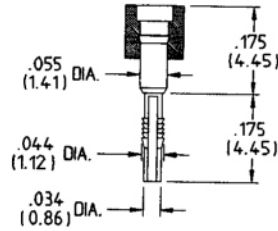
0 = Single Row



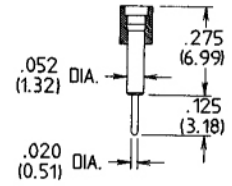
S



SL



CP  
Press-fit



E275