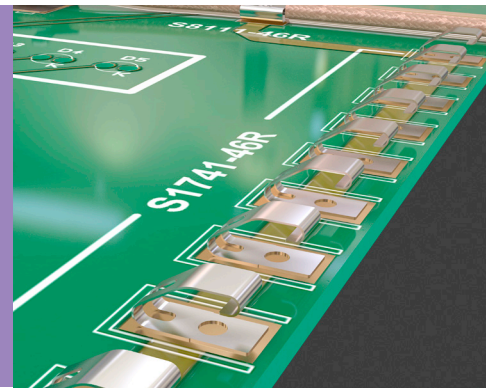


# Spring Contacts

## Grounding/RFI Contacts

- ❖ Packaged in EIA-481-2 compliant tape and reel.
- ❖ 'S' shaped contact for angled vertical contact.
- ❖ Spring loaded contacts maintain a positive force and stable electrical contact.
- ❖ Small PCB footprint.
- ❖ Multi-Directional contacts can be used in either vertical or horizontal orientations.



2.5mm HIGH		2.75mm HIGH										
<p>Recommended PC Board Pattern</p>		<p>Recommended PC Board Pattern</p>										
<table border="1"> <thead> <tr> <th>ORDER CODE</th> <th>FINISH</th> </tr> </thead> <tbody> <tr> <td>S7071-46 R</td> <td>Tin </td> </tr> </tbody> </table>		ORDER CODE	FINISH	S7071-46 R	Tin	<table border="1"> <thead> <tr> <th>ORDER CODE</th> <th>FINISH</th> </tr> </thead> <tbody> <tr> <td>S7081-42R</td> <td>Gold + Tin </td> </tr> </tbody> </table>		ORDER CODE	FINISH	S7081-42R	Gold + Tin	
ORDER CODE	FINISH											
S7071-46 R	Tin											
ORDER CODE	FINISH											
S7081-42R	Gold + Tin											
<p>Recommended PC Board Pattern</p>		<table border="1"> <thead> <tr> <th>ORDER CODE</th> <th>TYPE</th> <th>FINISH</th> </tr> </thead> <tbody> <tr> <td>S1941-46R</td> <td>Normal Force</td> <td>Tin </td> </tr> <tr> <td>S1951-46R</td> <td>Low Force</td> <td>Tin </td> </tr> </tbody> </table>		ORDER CODE	TYPE	FINISH	S1941-46R	Normal Force	Tin	S1951-46R	Low Force	Tin
ORDER CODE	TYPE	FINISH										
S1941-46R	Normal Force	Tin										
S1951-46R	Low Force	Tin										
<p>Recommended PC Board Pattern</p>		<p>Recommended PC Board Pattern</p>										

All dimensions in mm.