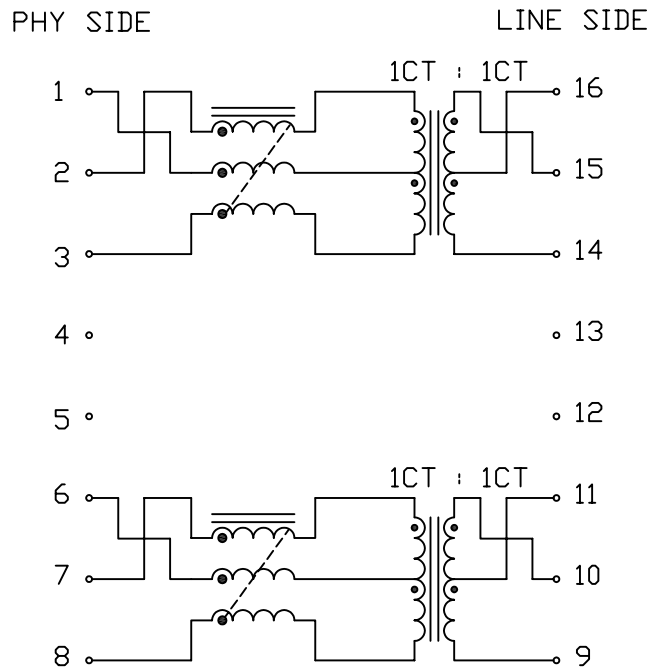


THE INFORMATION CONTAINED HEREIN IS CONSIDERED "PROPRIETARY" TO BEL FUSE INC. AND SHALL NOT BE COPIED, REPRODUCED OR DISCLOSED WITHOUT THE WRITTEN APPROVAL OF BEL FUSE INC.

ELECTRICAL CHARACTERISTICS @25°C



SCHEMATIC



DC RESISTANCE

| | |
|-----------------|------------|
| (2-3), (7-8) | 1.00 Ω MAX |
| (1-3), (6-8) | 0.75 Ω MAX |
| (15-14), (10-9) | 0.50 Ω MAX |
| (16-14), (11-9) | 0.30 Ω MAX |

URNS RATIO

(2-1-3) : (15-16-14)
(7-6-8) : (10-11-9)

1CT : 1CT ±2%
1CT : 1CT ±2%

POLARITY

PER DOT CONVENTION

□CL

-40°C TO +85°C
-40°C TO +85°C

@100kHz, 100mV
350uH MIN WITH 11mA DC BIAS
120uH MIN WITH 19mA DC BIAS

INTERWINDING CAPACITANCE, Cw/w

@1MHz, 20mV
30pF MAX

INSERTION LOSS

0.3MHz - 1MHz
1MHz - 65MHz
65MHz - 100MHz
100MHz - 125MHz

1.1dB MAX
0.8dB MAX
1.0dB MAX
1.2dB MAX

RETURN LOSS @100ΩHM

0.5MHz - 40MHz
40MHz - 100MHz

18dB MIN
12-20LOG(f/80MHz)dB MIN

CROSSTALK

0.3MHz - 100MHz

33-20LOG(f/100MHz)dB MIN

CM TO CM REJ

0.3MHz - 100MHz

30dB MIN

CM TO DM REJ

0.3MHz - 100MHz

35dB MIN

BALANCED DC LINE CURRENT

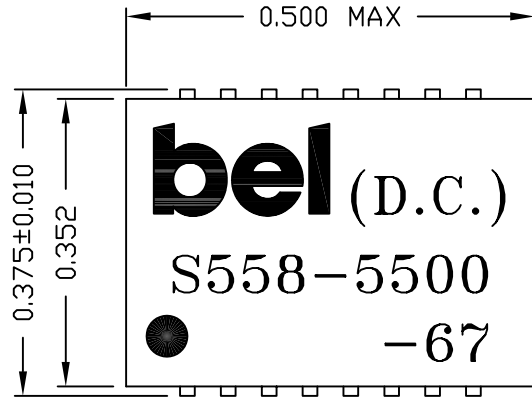
720mA MAX @57VDC CONTINUOUS
1.2A MAX @57VDC FOR 200mS

HIPOT

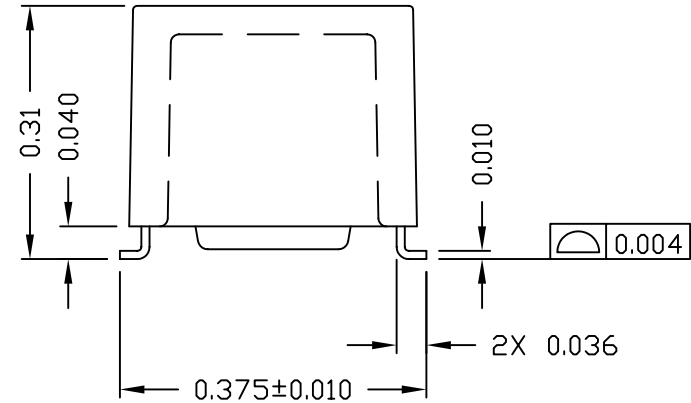
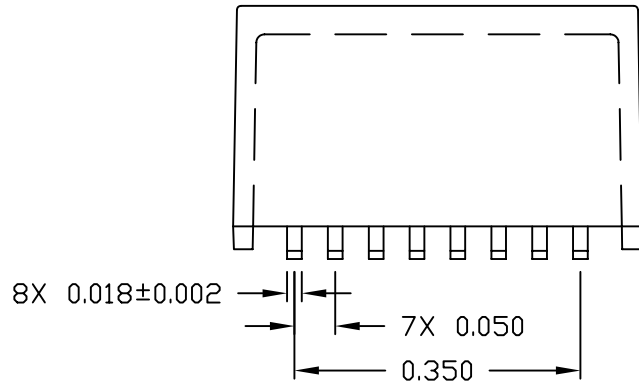
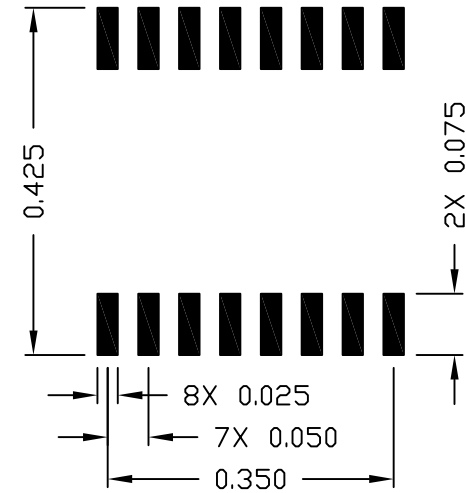
1500 Vrms

| | | | | | | | |
|---------------|------------|--------------------------|------------------------|---------------|-------------------------|-------------------------------|----------|
| ORIGINATED BY | DATE | TITLE | PART NO. / DRAWING NO. | STANDARD DIM. | [] METRIC DIM. AS REF. | REV. : B | PAGE : 2 |
| Alice Pang | 2015-05-19 | ELECTRICAL SPECIFICATION | S558-5500-67 | TOL. IN INCH | UNIT : INCH [mm] | POWER PROTECT CONNECT | |
| DRAWN BY | DATE | | FILE NAME | .X | SCALE : N/A | | |
| ZC Guo | 2015-05-19 | | S558550067B.DWG | .XX | SIZE : A4 | | |
| | | | | .XXX | | | |

THE INFORMATION CONTAINED HEREIN IS CONSIDERED "PROPRIETARY" TO BEL FUSE INC. AND SHALL NOT BE COPIED, REPRODUCED OR DISCLOSED WITHOUT THE WRITTEN APPROVAL OF BEL FUSE INC.




SUGGESTED PCB PAD LAYOUT



NOTES :

1. STANDARD MARKING REFER TO DDC-HAND-WORK-04
2. PACKAGE CODE : "RPS002"

| | |
|--|----------|
| REV. : B | PAGE : 3 |
|  <p>POWER PROTECT CONNECT</p> | |

| | | | | | |
|----------------|------------|--------------------|------------------------|---------------|-------------------------|
| ORIGINATED BY | DATE | TITLE | PART NO. / DRAWING NO. | STANDARD DIM. | [] METRIC DIM. AS REF. |
| Lawrence Tsang | 2015-05-19 | MECHANICAL OUTLINE | S558-5500-67 | TOL. IN INCH | UNIT : INCH [mm] |
| DRAWN BY | DATE | | FILE NAME | .X | SCALE : N/A |
| ZC Guo | 2015-05-19 | | S558550067B.DWG | .XX ±0.01 | SIZE : A4 |
| | | | | .XXX ±0.005 | |