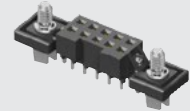




S2M-105-02-F-D



S2M-105-01-L-D-DS



S2M-110-01-L-D



(2.00 mm) .0787"

S2M SERIES

# HIGH-RELIABILITY CABLE SOCKET

## SPECIFICATIONS

For complete specifications and recommended PCB layouts see [www.samtec.com?S2M](http://www.samtec.com?S2M)

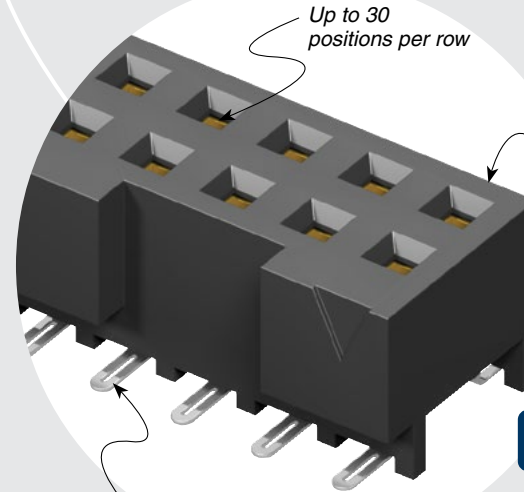
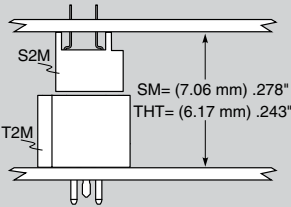
**Insulator Material:**  
Black Liquid Crystal Polymer  
**Contact Material:**  
BeCu  
**Plating:**  
Sn or Au over  
50 μm (1.27 μm) Ni  
**Current Rating (S2M/T2SD):**  
2.6 A per pin  
(2 pins powered)  
**Operating Temp Range:**  
-55 °C to +125 °C  
**Insertion Depth:**  
(3.05 mm) .120" to  
(3.25 mm) .128"  
**Max Cycles:**  
100 with 10 μm (0.25 μm) Au  
**RoHS Compliant:**  
Yes

**Board Mates:**  
T2M

**Cable Mates:**  
T2SD



## MATED HEIGHT



**RUGGEDIZED**  
BY SAMTEC

• Locking clip

## PROCESSING

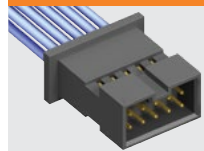
**Lead-Free Solderable:**  
Yes  
**SMT Lead Coplanarity:**  
(0.10 mm) .004" max

## RECOGNITIONS

For complete scope of recognitions see [www.samtec.com/quality](http://www.samtec.com/quality)



## OTHER SOLUTIONS

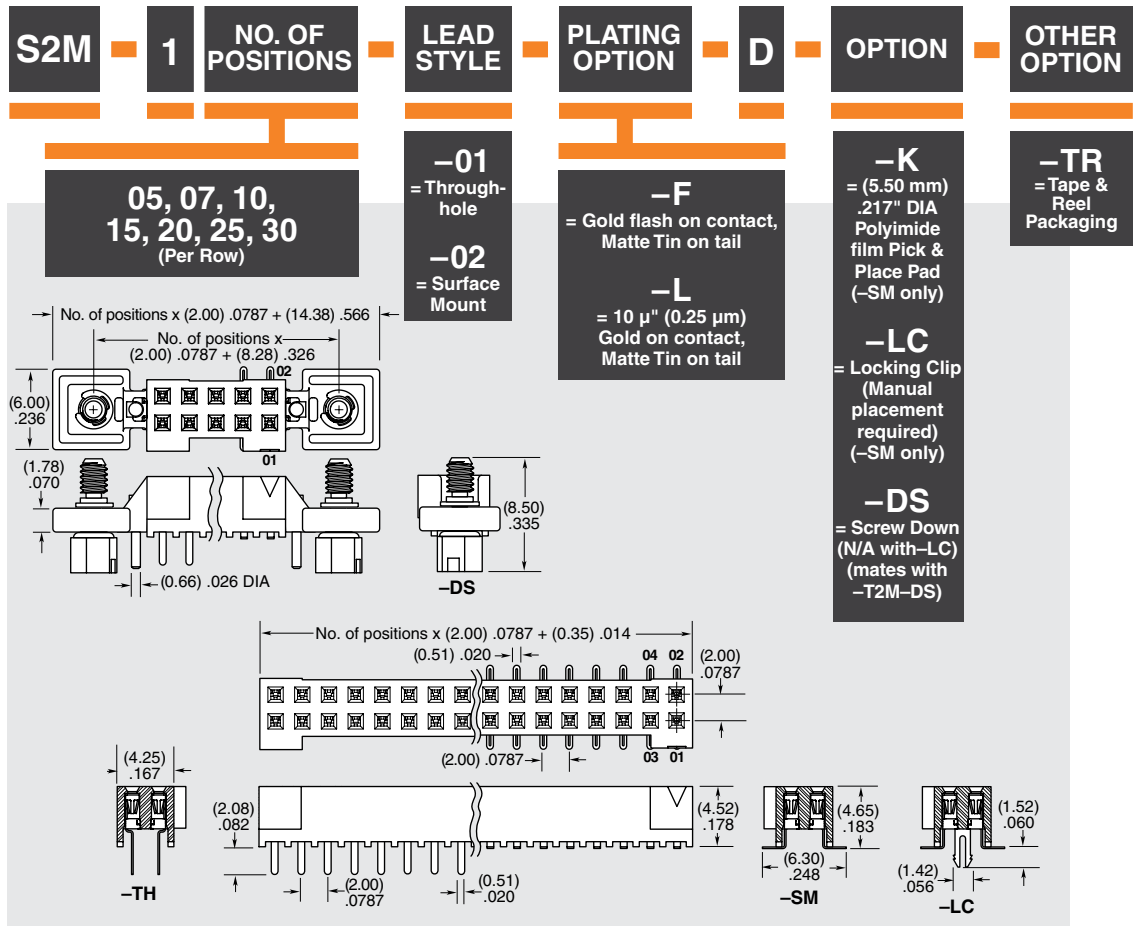


See [www.samtec.com?T2SD](http://www.samtec.com?T2SD) or contact Samtec.

## ALSO AVAILABLE (MOQ Required)

- Other platings
- Contact Samtec.

**Note:**  
Some lengths, styles and options are non-standard, non-returnable.



Due to technical progress, all designs, specifications and components are subject to change without notice.

[WWW.SAMTEC.COM](http://WWW.SAMTEC.COM)

All parts within this catalog are built to Samtec's specifications. Customer specific requirements must be approved by Samtec and identified in a Samtec customer-specific drawing to apply.