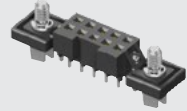


S2M-105-02-F-D



S2M-110-01-L-D

S2M-105-01-L-D-DS



(2.00 mm) .0787"

S2M SERIES

HIGH-RELIABILITY CABLE SOCKET

SPECIFICATIONS

For complete specifications and recommended PCB layouts see www.samtec.com?S2M

Insulator Material: Black Liquid Crystal Polymer

Contact Material: BeCu

Plating: Sn or Au over

50 μm (1.27 μm) Ni

Current Rating (S2M/T2SD): 2.6 A per pin

(2 pins powered)

Operating Temp Range: -55 °C to +125 °C

Contact Resistance: 10 mΩ max

Insertion Depth: (3.05 mm) .120" to (3.25 mm) .128"

Max Cycles: 100 with 10 μm (0.25 μm) Au

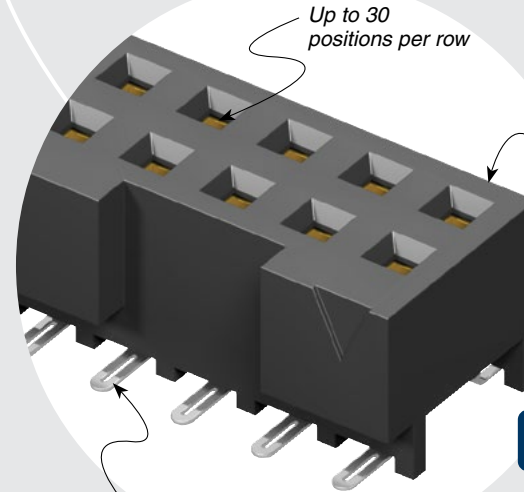
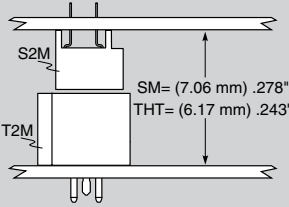
RoHS Compliant: Yes

Board Mates: T2M

Cable Mates: T2SD



MATED HEIGHT



Up to 30 positions per row

Mates with Tiger Eye™ discrete wire cable assemblies

Choice of surface mount or through-hole

RUGGEDIZED BY SAMTEC

• Locking clip

PROCESSING

Lead-Free Solderable: Yes

SMT Lead Coplanarity: (0.10 mm) .004" max

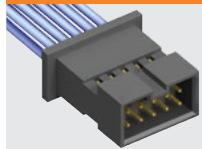
RECOGNITIONS

For complete scope of recognitions see www.samtec.com/quality



FILE NO. E115194

OTHER SOLUTIONS



See www.samtec.com?T2SD or contact Samtec.

ALSO AVAILABLE (MOQ Required)

- Other platings
- Contact Samtec.

Note: Some lengths, styles and options are non-standard, non-returnable.

S2M	1	NO. OF POSITIONS	LEAD STYLE	PLATING OPTION	D	OPTION	OTHER OPTION
		05, 07, 10, 15, 20, 25, 30 (Per Row)	-01 = Through-hole -02 = Surface Mount	-F = Gold flash on contact, Matte Tin on tail -L = 10 μm (0.25 μm) Gold on contact, Matte Tin on tail		-K = (5.50 mm) .217" DIA Polyimide film Pick & Place Pad (-SM only) -LC = Locking Clip (Manual placement required) (-SM only) -DS = Screw Down (N/A with -LC) (mates with -T2M-DS)	-TR = Tape & Reel Packaging

Due to technical progress, all designs, specifications and components are subject to change without notice.

WWW.SAMTEC.COM

All parts within this catalog are built to Samtec's specifications. Customer specific requirements must be approved by Samtec and identified in a Samtec customer-specific drawing to apply.