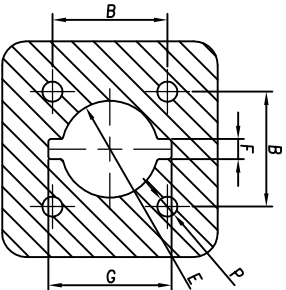
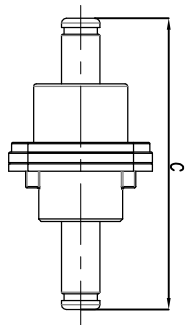
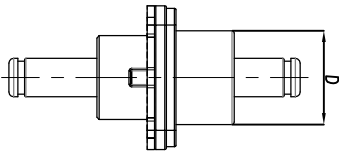
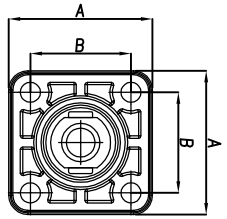
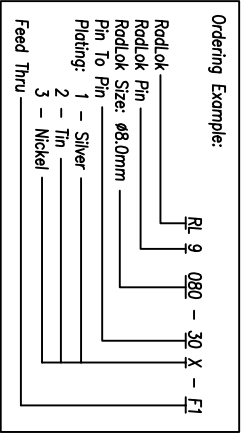
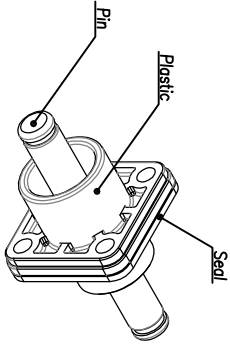


CUSTOMER DRAWING



Panel Size

REV	DESCRIPTION	DATE	BY	APPR
A	INITIAL RELEASE	02/07/14	DH	EC
B	ADD SIZE 14.0mm	06/12/14	DH	EC
C	CHANGE DIMENSION - E, C FOR SIZE 14.0	09/15/14	DH	EC

Size (mm)	A (mm)	B (mm)	C (mm)	D (mm)	E (mm)	F (mm)	G (mm)	P	Current (A)	Ordering Number (XXX-For Plating)	Plating
3.6	21.0	14.0	41.3	11.9	11.9	2.8	15.2	M3	70	RL9036-30X-F1	1 - Silver 2 - Tin 3 - Nickel
5.7	25.0	17.0	50.0	15.2	14.7	18.2	18.2		120	RL9057-30X-F1	
8.0	30.0	21.0	60.8	19.6	18.2	23.7	23.7		200	RL9080-30X-F1	
10.0	33.0	24.0	74.5	23.0	20.6	25.7	25.7	M4	300	RL9100-30X-F1	
12.0	36.0	26.0	78.0	25.5	23.3	27.7	27.7		400	RL9120-30X-F1	
14.0	37.0	27.0	96.0	28.0	27.3	31.8	31.8		500	RL9140-30X-F1	



Amphenol Technical Products International GZ

DATE	REV	SCALE
12/12/2013	1	A3
12/12/2013	2	C

UNLESS OTHERWISE SPECIFIED
1) All dimensions are in metric(mm).
2) References are as follows:
1 PL DEC 40.90
2 PL DEC 40.20
Angles ±1°

DATE	DH	12/12/2013	DATE	12/12/2013
CHECKED	EC	12/12/2013	CHECKED	EC
APPROVAL			APPROVAL	

PART NAME: RADLOK® Feed Thru Pin To Pin

DWG NO: See Specification

CUST PART #: N/A

CUST REV: C

F

E

D

C

A

B

C

D

1

2

3

4

5

6

7

8

THIS DRAWING IS SUPPLIED FOR INFORMATION ONLY. DESIGN FEATURES, SPECIFICATIONS AND PERFORMANCE DATA SHOWN HEREON ARE THE PROPERTY OF THE AMPHENOL CORPORATION. NO RIGHTS OF REPRODUCTION ARE IMPLIED. ALL DIMENSIONS ARE SUBJECT TO NORMAL MANUFACTURING VARIATIONS.

CUSTOMER DRAWING

REVOLUTIONS		DATE	BY	APPR
REV	DESCRIPTION	02/07/14	DH	EC
A	INITIAL RELEASE	06/12/14	DH	EC
B	ADD SIZE 14.0mm	09/15/14	DH	EC
C	CHANGE DIMENSION "C" FOR SIZE 14.0			

Table				
Plating Type	Description	FG P/(NBK)	FG P/(NOR)	FG P/(RE)
Silver 鍍銀	RL9036-301-F1	AC-HA000395	AC-HA001633	AC-HA001723
	RL9048-301-F1	AC-HA000396	AC-HA001634	AC-HA001724
	RL9057-301-F1	AC-HA000397	AC-HA001635	AC-HA001725
	RL9080-301-F1	AC-HA000398	AC-HA001636	AC-HA001726
	RL9091-301-F1	AC-HA000399	AC-HA001637	AC-HA001727
	RL9100-301-F1	AC-HA000400	AC-HA001638	AC-HA001728
	RL9120-301-F1	AC-HA000401	AC-HA001639	AC-HA001729
	RL9140-301-F1	AC-HA000402	AC-HA001640	AC-HA001730
	RL9036-302-F1	AC-HA001034	AC-HA001663	AC-HA001753
	RL9048-302-F1	AC-HA001035	AC-HA001664	AC-HA001754
Tin 鍍錫	RL9057-302-F1	AC-HA001036	AC-HA001665	AC-HA001755
	RL9080-302-F1	AC-HA001037	AC-HA001666	AC-HA001756
	RL9091-302-F1	AC-HA001038	AC-HA001667	AC-HA001757
	RL9100-302-F1	AC-HA001039	AC-HA001668	AC-HA001758
	RL9120-302-F1	AC-HA001040	AC-HA001669	AC-HA001759
	RL9140-302-F1	AC-HA001041	AC-HA001670	AC-HA001760
	RL9036-303-F1	AC-HA000354	AC-HA001693	AC-HA001783
	RL9048-303-F1	AC-HA000355	AC-HA001694	AC-HA001784
	RL9057-303-F1	AC-HA000356	AC-HA001695	AC-HA001785
	Nickel 鍍鎳	RL9080-303-F1	AC-HA000357	AC-HA001696
RL9091-303-F1		AC-HA000358	AC-HA001697	AC-HA001787
RL9100-303-F1		AC-HA000359	AC-HA001698	AC-HA001788
RL9120-303-F1		AC-HA000360	AC-HA001699	AC-HA001789
RL9140-303-F1		AC-HA000361	AC-HA001700	AC-HA001790

THIS DRAWING IS SUPPLIED FOR INFORMATION ONLY. DESIGN FEATURES, SPECIFICATIONS AND PERFORMANCE DATA SHOWN HEREON ARE THE PROPERTY OF THE AMPHENOL CORPORATION. NO RIGHTS OF REPRODUCTION ARE IMPLIED. ALL DIMENSIONS ARE SUBJECT TO NORMAL MANUFACTURING VARIATIONS.



Amphenol Technical Products International GZ

第三角投影视图 THIRD ANGLE PROJECTION	英制 SHEET	幅面 SIZE	版次 REV.	比例 SCALE
2 OF 2	A3	C		

UNLESS OTHERWISE SPECIFIED
 1) All dimensions are in metric(mm).
 2) Tolerances are as follows:
 0 PL DEC 40.50
 1 PL DEC 40.50
 2 PL DEC 40.20
 Angles ±1°

签名 SIGNATURE	日期 DATE	制图 DRAWN	DH	审核 CHECKED	DX	批准 APPROVAL	EC
	12/12/2013						
	12/12/2013						

PART NAME: RADLOK® Feed Thru Pin To Pin
 DWG NO: See Specification
 CUST PART #: N/A
 CUST REV: C