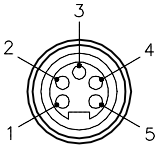
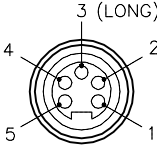
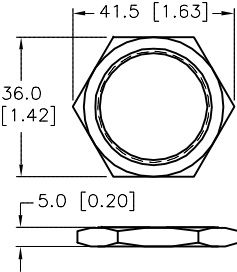
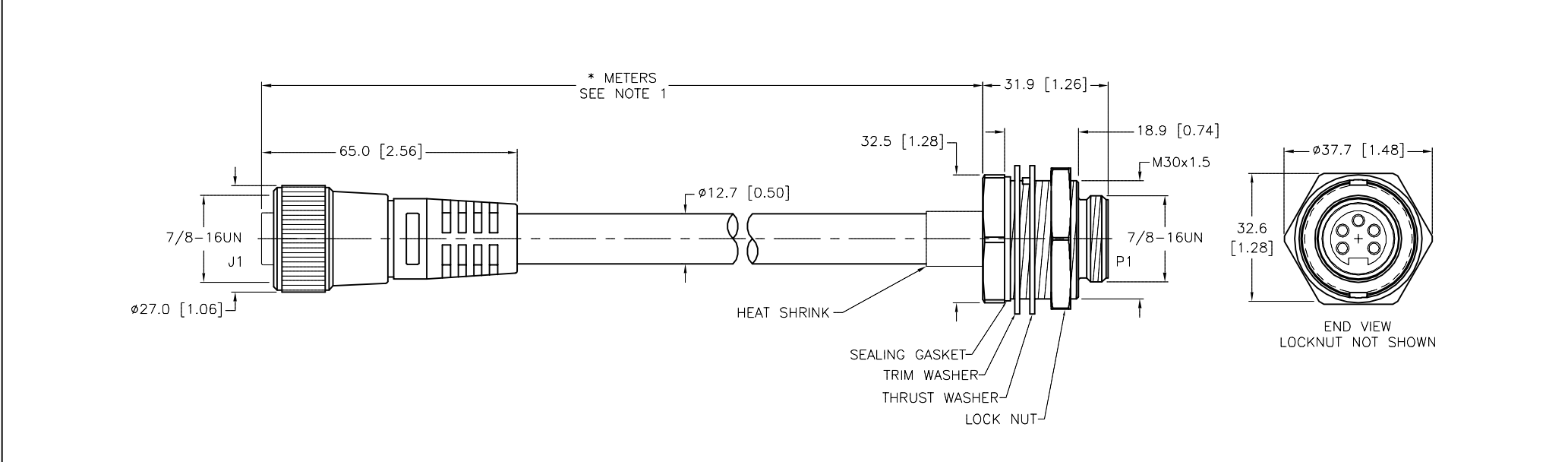
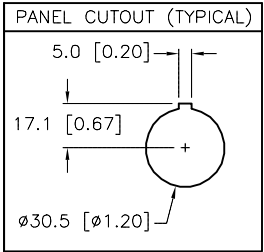


FEMALE END VIEW	MALE END VIEW	M30x1.5 LOCKNUT	SPECIFICATIONS	
 <p>1 = WHITE 2 = RED 3 = GREEN 4 = ORANGE 5 = BLACK</p>	 <p>1 = WHITE 2 = RED 3 = GREEN 4 = ORANGE 5 = BLACK</p>		CONTACT CARRIER MATERIAL/COLOR	NYLON OR TPU/YEL (J1), BLK (P1)
			MOLDED HEAD MATERIAL/COLOR	TPU/YELLOW
			CONTACT MATERIAL/PLATING	BRASS/GOLD
			COUPLING NUT MATERIAL/PLATING	STAINLESS STEEL/PASSIVATED
			HOUSING/LOCKNUT MATERIAL/PLATING	STAINLESS STEEL/PASSIVATED
			RATED CURRENT [A]	10.0 A
			RATED VOLTAGE [V]	600 V
			OUTER CABLE JACKET MATERIAL/COLOR	PVC/YELLOW
			CONDUCTOR INSULATION MATERIAL	PVC
			NUMBER OF CONDUCTORS [AWG]	5x16 AWG
			TEMPERATURE RANGE	-40°C to +105°C (-40°F to +221°F)
			PROTECTION CLASS	MEETS NEMA 1,3,4,6P AND IEC IP67



CABLE LENGTH	TOLERANCE*
ALL LENGTHS	+ 4% (OR 50mm) OF LENGTH - 0% (OR 0mm) OF LENGTH WHICHEVER IS GREATER
STRIP LENGTH	TOLERANCE*
0-7mm	±0.5mm
8-29mm	±1.0mm
30-49mm	±2.0mm
50-69mm	±3.0mm
70-100mm	±4.0mm
OVER 100mm	±5.0mm

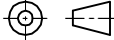
* UNLESS OTHERWISE SPECIFIED



SOURCE DRAWING - FOR REFERENCE ONLY

NOTES:

1. "*" INDICATES CABLE LENGTH IN METERS. CONTACT TURCK TO ORDER SPECIFIC LENGTHS.

RELATED DOCUMENTS	3RD ANGLE PROJECTION	THIS DRAWING IS CONFIDENTIAL AND THE PROPERTY OF TURCK INC. USE OF THIS DOCUMENT WITHOUT WRITTEN PERMISSION IS PROHIBITED.		TURCK INC High Technology Sensors and Automation Controls 3000 CAMPUS DRIVE MINNEAPOLIS, MN 55441 1-800-544-7769 (763) 553-7300 (763) 553-0708 fax turck.com	
1.		DRFT	RWC	DATE	11/01/07
2.		APVD		SCALE	1=1.5
3.	ALL DIMENSIONS DISPLAYED ON THIS DRAWING ARE FOR REFERENCE ONLY	UNIT OF MEASUREMENT		DESCRIPTION	
4.		MILLIMETER [INCH]		RKV RSFPV 56-*M	
MATERIAL	CONTACT TURCK FOR MORE INFORMATION	DO NOT SCALE THIS DRAWING		IDENTIFICATION NO.	REV
SEE SPECIFICATIONS				FILE: 777020443	E
FINISH				SHEET 1 OF 1	
SEE SPECIFICATIONS					

E	UPDATE CABLE DIA.	NF	12/15/14	47628
REV	DESCRIPTION	BY	DATE	ECO NO.