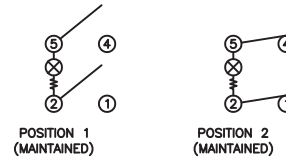


**SCHEMATIC**



**SPECIFICATIONS**

**FUNCTION:**  
2P1T OFF-ON

**RATINGS:**  
ANSI/UL 1054:  
20A 125VAC [UR, cUR]  
16A 125VAC 1/4HP [cURus]  
16A 250VAC 1/4HP [cURus]  
6.9A 250VAC 3/4HP [cURus]

ANSI/UL 1054 (233821):  
EN 61058-1:2002:

**ILLUMINATION VOLTAGE:**  
250V

**CONTACT RESISTANCE:**  
Initial: 20mΩ Max.

**INSULATION RESISTANCE:**  
100MΩ Min. at 500VDC

**DIELECTRIC STRENGTH:**  
1,000VAC For 1 Minute

**ELECTRICAL LIFE:**  
6,000 Cycles [cURus]

**TEMPERATURE:**  
-20°C to 65°C

**APPROVALS:**



**COLORS AND MARKINGS**

**BODY:**  
Black

**ACTUATOR:**  
Transparent Red

**MARKING:**  
ON/OFF Horizontal (4)

**MARKING COLOR:**  
Black

**MATERIALS**

**BODY:**  
Polyamide 6/6 (PA66), UL94 V-2

**ACTUATOR:**  
Polycarbonate (PC), UL94 V-2

**LAMP CARRIER:**  
Polyamide 6/6 (PA66), UL94 V-2

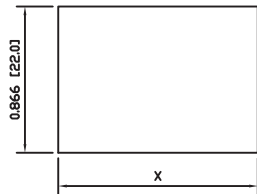
**LAMP:**  
Neon Bulb

**SPRING:**  
Piano Wire

**CONTACTS:**  
Silver Alloy

**TERMINALS:**  
Silver Plated Copper  
Silver Plated Brass

**SUGGESTED PANEL CUTOUT**



| PANEL THICKNESS         | X            |
|-------------------------|--------------|
| 0.030~0.049 [0.75~1.25] | 1.181 [30.0] |
| 0.049~0.079 [1.25~2.00] | 1.189 [30.2] |
| 0.079~0.118 [2.00~3.00] | 1.200 [30.5] |

| ACTUATOR  | A | 09/07/02 | CAB |
|-----------|---|----------|-----|
| BODY      | A | 09/07/02 | CAB |
| COLORS    | A | 09/07/02 | CAB |
| MATERIALS | A | 09/07/02 | CAB |

THE INFORMATION CONTAINED IN THIS DOCUMENT IS PROPRIETARY TO E-SWITCH AND IS NOT TO BE COPIED OR TRANSFERRED

| B    | REMOVE VDE/ENEC/CSA RATING AND NOTES | 100559 | 12/29/2021 | JS       |
|------|--------------------------------------|--------|------------|----------|
| A    | INITIAL RELEASE                      | NA     | 09/08/28   | CAB      |
| REV. | DESCRIPTION                          | PCR    | DATE       | DRAWN BY |

| DIMENSIONS         | INCHES [MILLIMETERS] |
|--------------------|----------------------|
| GENERAL TOLERANCES | ±0.008 [±0.2] / ±1'  |
| SCALE              | DRAWING NOT TO SCALE |

OBJECT ID: 000000301

**E-SWITCH®** | **LAMB INDUSTRIES™**

**RB242D1014-117**

| DRAWING NUMBER   | DATE            | REVISION |
|------------------|-----------------|----------|
| 14-RB242D1014117 | AUGUST 28, 2009 | B        |