

---

## Step-up DC / DC Converter with Overcurrent Protection

---

NO.EA-272-170405

### OUTLINE

The R1205x is a PWM control type step-up DC/DC converter IC with low supply current. Each of these ICs consists of an NMOS FET, a diode, an oscillator, a PWM comparator, a voltage reference unit, an error amplifier, a current limit circuit, an under voltage lockout circuit (UVLO), an over-voltage protection circuit (OVP), a soft-start circuit, a Maxduty limit circuit, and a thermal shutdown protection circuit. This step-up DC/DC converter can be easily built with a few external components such as a coil, a resistor, and a capacitor. As the protection functions, the R1205x has an Lx peak current limit function, an over voltage protection (OVP) function, an under voltage lock out (UVLO) function and a thermal shutdown function.

The R1205x presents the R1205x8xxA version that is optimized for the constant voltage power source, and the R1205x8xxB/C version that is optimized for driving the white LED with the constant current. The R1205x8xxB/C is an adjustable version that can change the LED brightness dynamically by using a 200Hz to 300kHz PWM signal toward the CE pin.

The R1205x is available in DFN1616-6B and TSOT-23-6 packages.

### FEATURES

- Input Voltage Range ..... 2.3V to 5.5V (R1205x8xxA)  
1.8V to 5.5V (R1205x8xxB/C)
- Supply Current ..... Typ. 800 $\mu$ A
- Standby Current ..... Max. 5 $\mu$ A
- Feedback Voltage ..... 1.0V $\pm$ 15mV (R1205x8xxA)  
0.2V $\pm$ 10mV (R1205x8xxB)  
0.4V $\pm$ 10mV (R1205x8xxC)
- Oscillator Frequency ..... Typ. 1.2MHz
- Maximum Duty Cycle ..... Typ. 91%
- UVLO Function ..... Typ.2.0V (Hys.Typ.0.2V) (R1205x8xxA)  
Typ.1.6V (Hys.Typ.0.1V) (R1205x8xxB/C)
- Selectable Lx Current Limit Function ..... Typ. 350mA / 700mA
- Over Voltage Protection ..... Typ. 25V
- LED dimming control (R1205x8xxB/C) .....by external PWM signal (Frequency 200Hz to 300kHz)
- Thermal Protection Function ..... Typ.150 $^{\circ}$ C(Hys.Typ.50 $^{\circ}$ C)
- Switch ON Resistance ..... Typ. 1.35 $\Omega$
- Packages ..... DFN1616-6B, TSOT-23-6
- Ceramic capacitors are recommended

### APPLICATION

- Constant Voltage Power Source for portable equipment
- OLED power supply for portable equipment
- White LED Backlight for portable equipment

---

**R1205x**

---

NO.EA-272-170405

**SELECTION GUIDE**

The OVP threshold voltage, current limit, package and  $V_{FB}$ /Auto discharge are user-selectable options.

Product Name	Package	Quantity per Reel	Pb Free	Halogen Free
R1205L8x1*-TR	DFN1616-6B	5,000 pcs	Yes	Yes
R1205N8x3*-TR-FE	TSOT-23-6	3,000 pcs	Yes	Yes

x : Designation of current limit.

(1) 350mA

(2) 700mA

\* : Designation of VFB.

(A) 1.0V

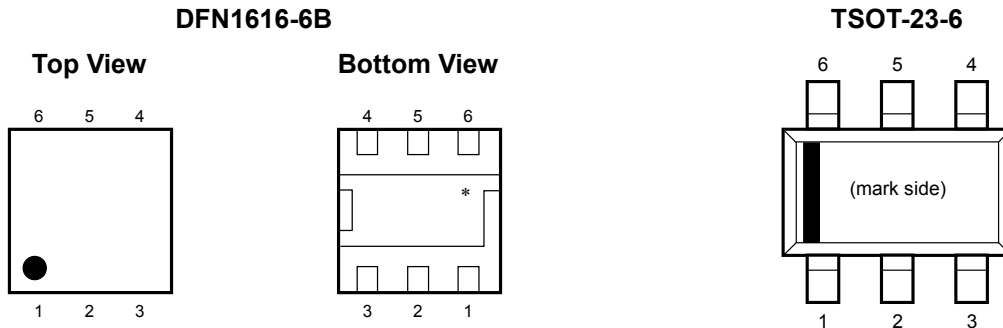
(B) 0.2V

(C) 0.4V

---



## PIN DESCRIPTIONS



### DFN1616-6B

Pin No	Symbol	Pin Description
1	CE	Chip Enable Pin ("H" Active)
2	VFB	Feedback Pin
3	LX	Switching Pin (Open Drain Output)
4	GND	Ground Pin
5	VIN	Input Pin
6	VOUT	Output Pin

\* The tab is substrate level (GND). The tab is better to be connected to the GND, but leaving it open is also acceptable.

### TSOT-23-6

Pin No	Symbol	Pin Description
1	CE	Chip Enable Pin ("H" Active)
2	VOUT	Output Pin
3	VIN	Input Pin
4	LX	Switching Pin (Open Drain Output)
5	GND	Ground Pin
6	VFB	Feedback Pin

**ABSOLUTE MAXIMUM RATINGS**

GND=0V

Symbol	Item	Rating	Unit
V <sub>IN</sub>	VIN Pin Voltage	-0.3 to 6.5	V
V <sub>CE</sub>	CE Pin Voltage	-0.3 to 6.5	V
V <sub>FB</sub>	VFB Pin Voltage	-0.3 to 6.5	V
V <sub>OUT</sub>	VOUT Pin Voltage	-0.3 to 28	V
V <sub>LX</sub>	LX Pin Voltage	-0.3 to 28	V
I <sub>LX</sub>	LX Pin Current	1000	mA
P <sub>D</sub>	Power Dissipation <sup>(1)</sup> (DFN1616-6B)	640	mW
	Power Dissipation <sup>(1)</sup> (TSOT-23-6)	460	
T <sub>j</sub>	Junction Temperature Range	-40 to 125	°C
T <sub>stg</sub>	Storage Temperature Range	-55 to 125	°C

**ABSOLUTE MAXIMUM RATINGS**

Electronic and mechanical stress momentarily exceeded absolute maximum ratings may cause the permanent damages and may degrade the life time and safety for both device and system using the device in the field. The functional operation at or over these absolute maximum ratings are not assured.

**RECOMMENDED OPERATING CONDITIONS**

Symbol	Item	Rating	Unit
V <sub>IN</sub>	Input Voltage (R1205x8xxA)	2.3 to 5.5	V
	Input Voltage (R1205x8xxB/C)	1.8 to 5.5	
T <sub>a</sub>	Operating Temperature Range	-40 to 85	°C

**RECOMMENDED OPERATING CONDITIONS**

All of electronic equipment should be designed that the mounted semiconductor devices operate within the recommended operating conditions. The semiconductor devices cannot operate normally over the recommended operating conditions, even if when they are used over such ratings by momentary electronic noise or surge. And the semiconductor devices may receive serious damage when they continue to operate over the recommended operating conditions.

<sup>(1)</sup> Refer to *POWER DISSIPATION* for detailed information.

**R1205x**

NO.EA-272-170405

**ELECTRICAL CHARACTERISTICS****R1205x**

(Ta=25°C)

Symbol	Item	Conditions	Min.	Typ.	Max.	Unit	
I <sub>DD</sub>	Supply Current	V <sub>IN</sub> =5.5V, V <sub>FB</sub> =0V, L <sub>X</sub> at no load		0.8	1.2	mA	
I <sub>standby</sub>	Standby Current	V <sub>IN</sub> =5.5V, V <sub>CE</sub> =0V		1.0	5.0	μA	
V <sub>UVLO1</sub>	UVLO Detector Threshold	V <sub>IN</sub> falling	R1205x8xxA	1.9	2.0	2.1	V
			R1205x8xxB/C	1.5	1.6	1.7	
V <sub>UVLO2</sub>	UVLO Released Voltage	V <sub>IN</sub> rising	R1205x8xxA		V <sub>UVLO1</sub> +0.2	2.3	V
			R1205x8xxB/C		V <sub>UVLO1</sub> +0.1	1.8	
V <sub>CEH</sub>	CE Input Voltage "H"	V <sub>IN</sub> =5.5V	1.5			V	
V <sub>CEL</sub>	CE Input Voltage "L"	V <sub>IN</sub> =1.8V			0.5	V	
R <sub>CE</sub>	CE Pull Down Resistance			1200		kΩ	
V <sub>FB</sub>	V <sub>FB</sub> Voltage Accuracy	V <sub>IN</sub> =3.6V	R1205x8xxA	0.985	1.000	1.015	V
			R1205x8xxB	0.19	0.2	0.21	
			R1205x8xxC	0.39	0.4	0.41	
ΔV <sub>FB</sub> /ΔT <sub>a</sub>	V <sub>FB</sub> Voltage Temperature Coefficient	V <sub>IN</sub> =3.6V, -40°C ≤ T <sub>a</sub> ≤ 85°C		±150		ppm/°C	
I <sub>FB</sub>	V <sub>FB</sub> Input Current	V <sub>IN</sub> =5.5V, V <sub>FB</sub> =0V or 5.5V	-0.1		0.1	μA	
t <sub>start</sub>	Soft-start Time	R1205x8xxA		2.0	3.0	ms	
R <sub>ON</sub>	FET ON Resistance	I <sub>LX</sub> =100mA		1.35		Ω	
I <sub>OFF</sub>	FET Leakage Current	V <sub>LX</sub> =24V			3.0	μA	
I <sub>LIM</sub>	FET Current Limit		R1205x81xx	250	350	450	mA
			R1205x82xx	500	700	900	
V <sub>F</sub>	Diode Forward Voltage	I <sub>SW</sub> =100mA		0.8		V	
I <sub>DIODEleak</sub>	Diode Leakage Current	V <sub>OUT</sub> =24V, V <sub>LX</sub> =0V			10	μA	
f <sub>osc</sub>	Oscillator Frequency	V <sub>IN</sub> =3.6V, V <sub>FB</sub> =0V	1000	1200	1400	kHz	
Maxduty	Maximum Duty Cycle	V <sub>IN</sub> =3.6V, V <sub>FB</sub> =0V	86	91		%	
V <sub>OVP1</sub>	OVP Detect Voltage	V <sub>IN</sub> =3.6V, V <sub>OUT</sub> rising	24.2	25	25.8	V	
V <sub>OVP2</sub>	OVP Release Voltage	V <sub>IN</sub> =3.6V, V <sub>OUT</sub> falling		V <sub>OVP1</sub> -1.8		V	
T <sub>TSD</sub>	Thermal Shutdown Detect Temperature	V <sub>IN</sub> =3.6V		150		°C	
T <sub>TSR</sub>	Thermal Shutdown Release Temperature	V <sub>IN</sub> =3.6V		100		°C	

## APPLICATION INFORMATION

## TYPICAL APPLICATIONS

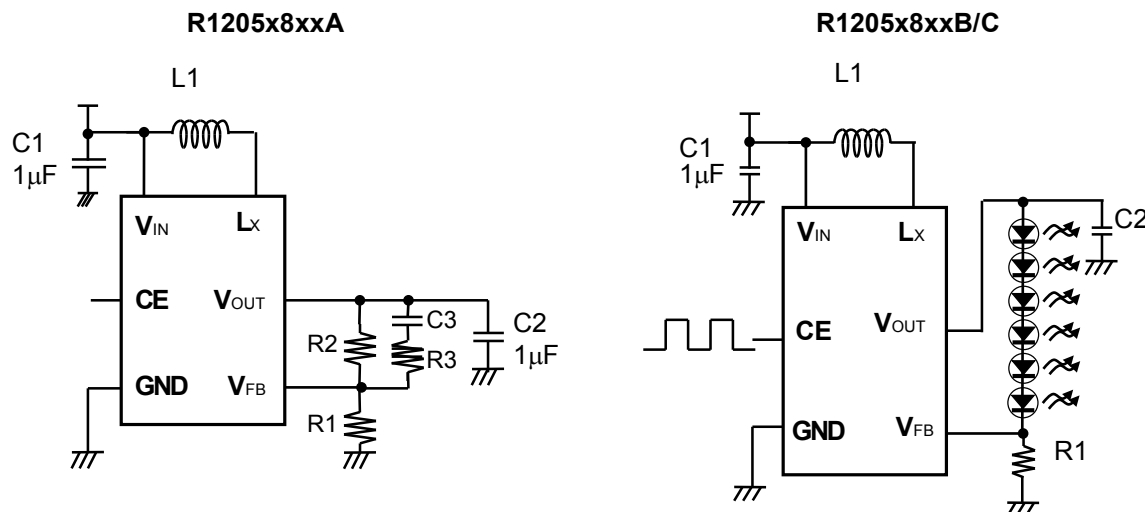


Table 1.Recommended external Inductor

L1 (µH)	Parts No	Rated Current(mA)	Size(mm)
10	LQH32CN100K53	450	3.2×2.5×1.55
10	LQH2MC100K02	225	2.0×1.6×0.9
10	VLF3010A-100	490	2.8×2.6×0.9
22	LQH32CN220K53	250	3.2×2.5×1.55
22	LQH2MC220K02	185	2.0×1.6×0.9
22	VLF3010A-220	330	2.8×2.6×0.9

Table 2.R1205x8xxA Recommended external components

	Rated voltage(V)	Part No.
C1	6.3	CM105B105K06
C2	25	GRM21BR11E105K
C3	25	220pF
R1		For V <sub>OUT</sub> Setting
R2		For V <sub>OUT</sub> Setting
R3		2kΩ

Table 3.R1205x8xxB/C Recommended external components

	R1205x	Rated voltage(V)	Part No.
C1	R1205x8xxB/C	6.3	CM105B105K06
C2	R1205x8xxB	25	GRM21BR11E224
	R1205x8xxC	25	C2012X7R1E474K
R1	R1205x8xxB	-	(10/ LED Arrays <sup>(1)</sup> (Ω))
	R1205x8xxC	-	(20/ LED Arrays <sup>(1)</sup> (Ω))

<sup>(1)</sup> LED Arrays indicate the number of parallel LEDs in series.

---

## R1205x

---

NO.EA-272-170405

### The Method of Output Voltage Setting (R1205x8xxA)

The output voltage ( $V_{OUT}$ ) can be calculated with divider resistors (R1 and R2) values as the following formula:

$$\text{Output Voltage (}V_{OUT}\text{)} = V_{FB} \times (R1 + R2) / R1$$

The total value of R1 and R2 should be equal or less than 300k $\Omega$ . Make the  $V_{IN}$  and GND line sufficient. The large current flows through the  $V_{IN}$  and GND line due to the switching. If this impedance ( $V_{IN}$  and GND line) is high, the internal voltage of the IC may shift by the switching current, and the operating may become unstable. Moreover, when the built-in  $L_x$  switch is turn OFF, the spike noise caused by the inductor may be generated.

### LED Current setting (R1205x8xxB/C)

When CE pin input is "H" (Duty=100%), LED current can be set with feedback resistor (R1)

$$I_{LED} = V_{FB} / R1$$

### LED Dimming Control (R1205x8xxB/C)

The LED brightness can be controlled by inputting the PWM signal to the CE pin. If the CE pin input is "L" in the fixed time (Typ.0.5ms), the IC becomes the standby mode and turns OFF LEDs.

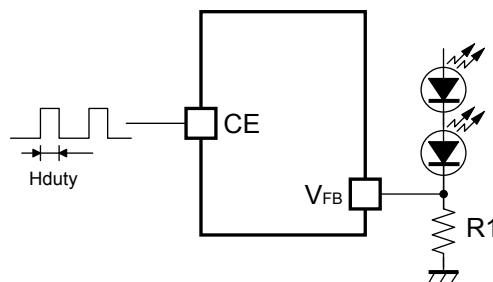
The current of LEDs can be controlled by Duty of the PWM signal of the input CE pin. The current of LEDs when High-Duty of the CE input is "Hduty" reaches the value as calculatable following formula.

$$I_{LED} = Hduty \times V_{FB} / R1$$

The frequency of the PWM signal is using the range between 200Hz to 300kHz.

When controlling the LED brightness by the PWM signal of 5kHz or less, R1205x8xxB/C are recommended to avoid discharge function during dimming control.

When controlling the LED brightness by the PWM signal of 20kHz or less, the increasing or decreasing of the inductor current might be make a sounds in the hearable sound wave area. In that case, please use the PWM signal in the high frequency area.



Dimming Control by CE Pin Input

### Low luminance Dimming Accuracy (R1205x8xxC)

Low luminance Dimming filtered  $V_{FB}$  voltage tolerance depends on the offset voltage of the internal DC/DC converter. By this offset voltage, some voltage difference may be generated between  $V_{REF}$  voltage and  $V_{FB}$  voltage. Low luminance Dimming Accuracy is shown in Table.4

**Table 4. Low luminance Dimming Accuracy for R1205x8xxC (R1=20ohm)**

The duty of a PWM signal for the CE pin	I <sub>LED</sub> Min.	I <sub>LED</sub> Max.
3.5% (Frequency = 20kHz to 300kHz)	0.01mA <sup>(1)</sup>	2.1mA <sup>(1)</sup>

### Soft-Start (R1205x8xxA)

The output and reference of the error amplifier start from 0V and the reference gradually rises up to 1.0V. After the softstart time ( $T_{SS}$ ), output voltage rise up to the setting voltage.

The output of the error amplifier starts from 0V and the inrush current is suppressed when starting by the CE pin "H" input. Moreover, the inrush current can be suppressed by gradually enlarging Duty of the PWM signal to the CE pin.

### Current Limit Function

Current limit function monitors the over current and if it reaches the peak current, it will turn off the driver. When the over current decreases, it will restart oscillation and will restart the monitoring.

### Inductor Selection

The peak current of the inductor under the stationary operation can be calculated by the following formula.

$$I_{Lmax} = 1.25 \times I_{LED} \times V_{OUT} / V_{IN} + 0.5 \times V_{IN} \times (V_{OUT} - V_{IN}) / (L \times V_{OUT} \times f_{osc})$$

In the case of adjusting the brightness at the start-up or by the CE pin, the peak current can be transiently more than the above. Select the inductor that can limit the peak current within the current limit of the ICs. Also, select the inductor of which peak current will not exceed the rated inductor value. The recommended inductance value is between 10 $\mu$ H to 22 $\mu$ H.

### Capacitor Selection

The recommended capacitor value for C1 is in the range from 1.0 $\mu$ F to 4.7 $\mu$ F. Connect C1 between  $V_{IN}$  and GND pins as close as possible to the pins. And, the recommended capacitor value for C2 is in the following range. The capacitor for C2 requires enough capacitance, with consideration of a DC bias dependence of capacitance value at the set output voltage.

In R1205x8xxA, connect a capacitor in the range from 1.0 $\mu$ F to 4.7 $\mu$ F between  $V_{OUT}$  and GND pins.

In R1205x8xxB, connect a capacitor in the range from 0.22 $\mu$ F to 1.0 $\mu$ F between  $V_{OUT}$  and GND pins.

In R1205x8xxC, connect a capacitor in the range from 0.47 $\mu$ F to 2.2 $\mu$ F between  $V_{OUT}$  and GND pins.

<sup>(1)</sup> guaranteed by design engineering (Ta=25 °C)

---

## R1205x

---

NO.EA-272-170405

### External Components Setting

If the  $V_{OUT}$  spike noise is high, it may influence on the  $V_{FB}$  pin to cause the operation of R1205x8xxA unstable. To reduce the noise coming into  $V_{FB}$  pin, please place a  $1k\Omega$  to  $5k\Omega$  resistor in R3 in Fig 1.

### Application of Using 5.5V or more Power Supply

Other than the IC power supply, if there is a power supply greater than 5.5V, the high power output can be achieved by using the power supply as an inductor power supply. In this case, please place a capacitor between an inductor power supply and GND (shown in Fig 2.) aside from a bypass capacitor between the  $V_{IN}$  pin and GND of the IC.

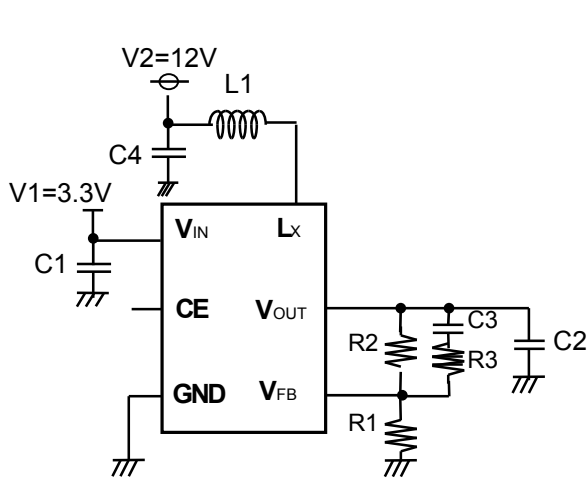


Fig 1. R1205x8xxA

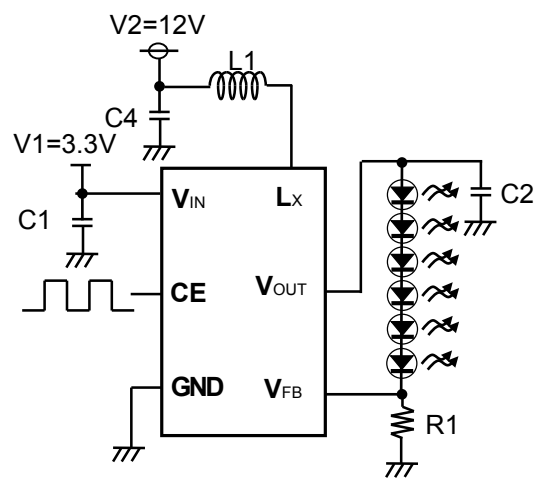
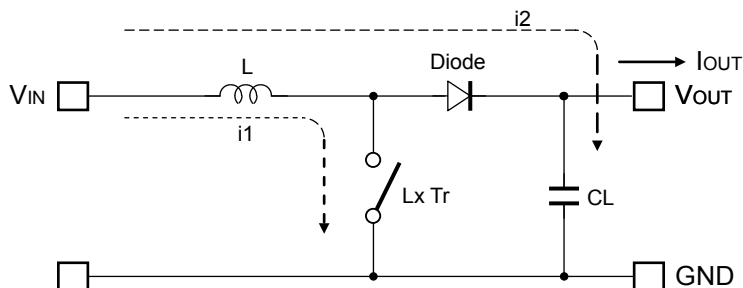


Fig 2. R1205x8xxB/C

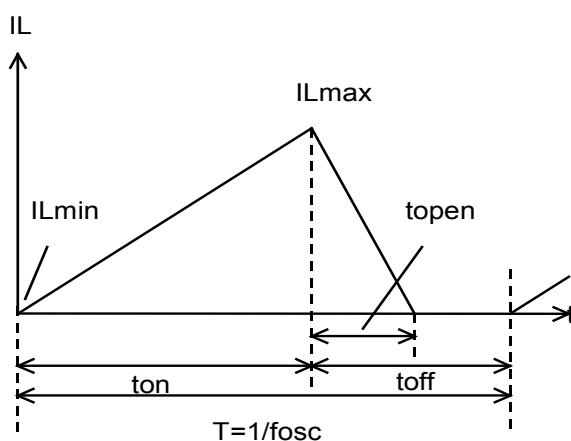
Operation of Step-Up Dc/Dc Converter and Output Current

<Basic Circuit>

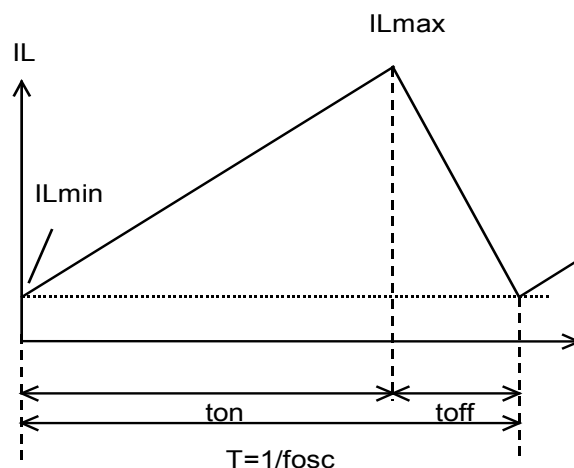


<Current through L>

Discontinuous mode



Continuous mode



There are two operation modes of the step-up PWM control-DC/DC converter. That is the continuous mode and discontinuous mode by the continuousness inductor.

When the transistor turns ON, the voltage of inductor L becomes equal to VIN voltage. The increase value of inductor current (i1) will be

$$\Delta i1 = V_{IN} \times t_{on} / L \dots\dots\dots \text{Formula 1}$$

As the step-up circuit, during the OFF time (when the transistor turns OFF) the voltage is continually supply from the power supply. The decrease value of inductor current (i2) will be

$$\Delta i2 = (V_{OUT} - V_{IN}) \times t_{open} / L \dots\dots\dots \text{Formula 2}$$

---

**R1205x**

---

NO.EA-272-170405

At the PWM control-method, the inductor current become continuously when  $t_{open}=t_{off}$ , the DC/DC converter operate as the continuous mode.

In the continuous mode, the variation of current of  $i_1$  and  $i_2$  is same at regular condition.

$$V_{IN} \times t_{on} / L = (V_{OUT} - V_{IN}) \times t_{off} / L \dots\dots\dots \text{Formula 3}$$

The duty at continuous mode will be

$$\text{duty (\%)} = t_{on} / (t_{on} + t_{off}) = (V_{OUT} - V_{IN}) / V_{OUT} \dots\dots\dots \text{Formula 4}$$

The average of inductor current at  $t_f = t_{off}$  will be

$$I_L(\text{Ave.}) = V_{IN} \times t_{on} / (2 \times L) \dots\dots\dots \text{Formula 5}$$

If the input voltage = output voltage, the  $I_{OUT}$  will be

$$I_{OUT} = V_{IN}^2 \times t_{on} / (2 \times L \times V_{OUT}) \dots\dots\dots \text{Formula 6}$$

If the  $I_{OUT}$  value is large than above the calculated value (Formula 6), it will become the continuous mode, at this status, the peak current ( $I_{Lmax}$ ) of inductor will be

$$I_{Lmax} = I_{OUT} \times V_{OUT} / V_{IN} + V_{IN} \times t_{on} / (2 \times L) \dots\dots\dots \text{Formula 7}$$

$$I_{Lmax} = I_{OUT} \times V_{OUT} / V_{IN} + V_{IN} \times T \times (V_{OUT} - V_{IN}) / (2 \times L \times V_{OUT}) \dots\dots\dots \text{Formula 8}$$

The peak current value is larger than the  $I_{OUT}$  value. In case of this, selecting the condition of the input and the output and the external components by considering of  $I_{Lmax}$  value.

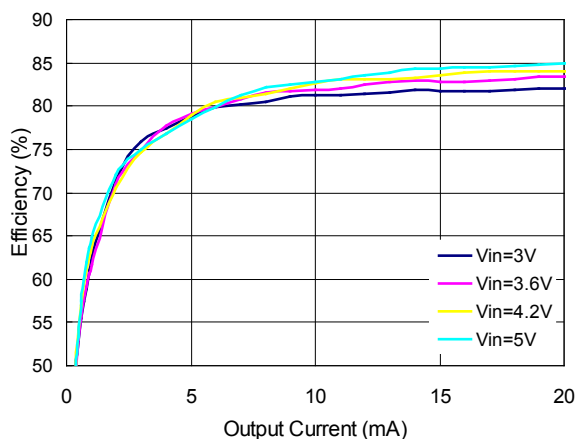
The explanation above is based on the ideal calculation, and the loss caused by  $L_x$  switch and the external components are not included.

The actual maximum output current will be between 50% and 80% by the above calculations. Especially, when the  $I_L$  is large or  $V_{IN}$  is low, the loss of  $V_{IN}$  is generated with on resistance of the switch. Moreover, it is necessary to consider  $V_f$  of the diode (approximately 0.8V) about  $V_{OUT}$ .

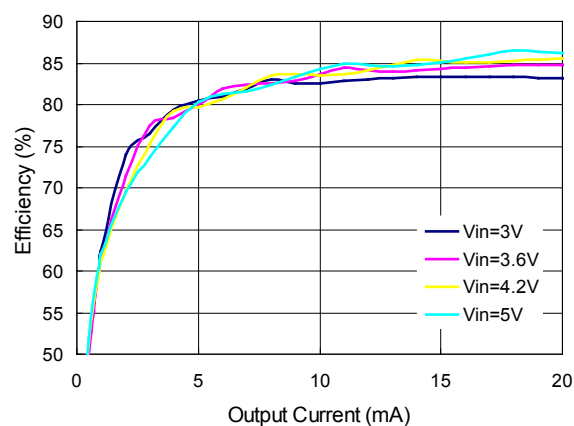
## TYPICAL CHARACTERISTICS

### 1) Efficiency vs. Output Current Characteristics (R1205N823A)

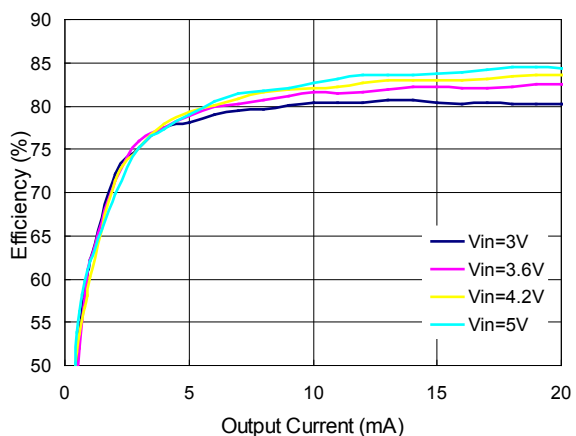
$V_{OUT}=10V, L=10\mu H$  (LQH32CN100K53)



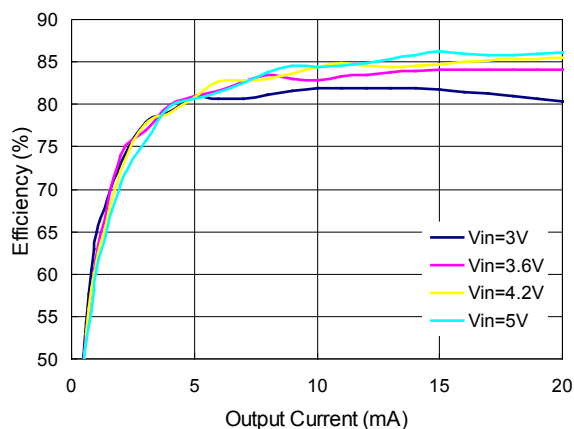
$V_{OUT}=10V, L=22\mu H$  (LQH32CN220K53)



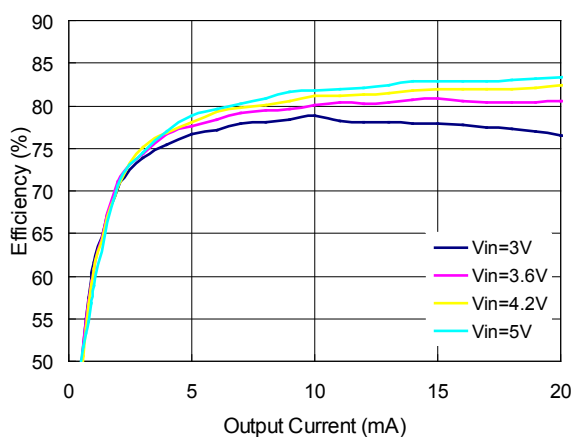
$V_{OUT}=15V, L=10\mu H$  (LQH32CN100K53)



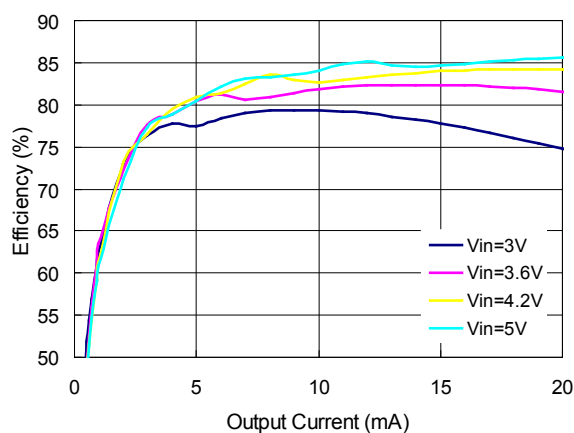
$V_{OUT}=15V, L=22\mu H$  (LQH32CN220K53)



$V_{OUT}=20V, L=10\mu H$  (LQH32CN100K53)



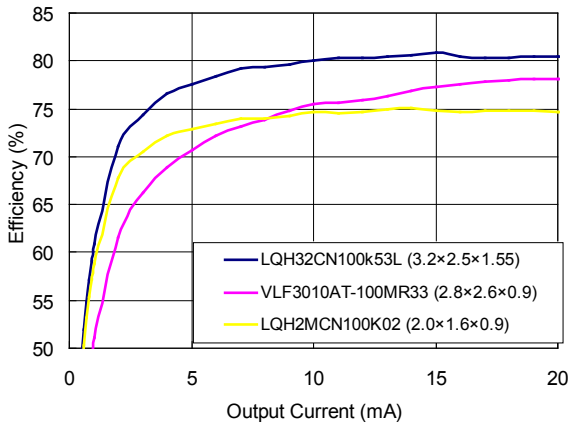
$V_{OUT}=20V, L=22\mu H$  (LQH32CN220K53)



# R1205x

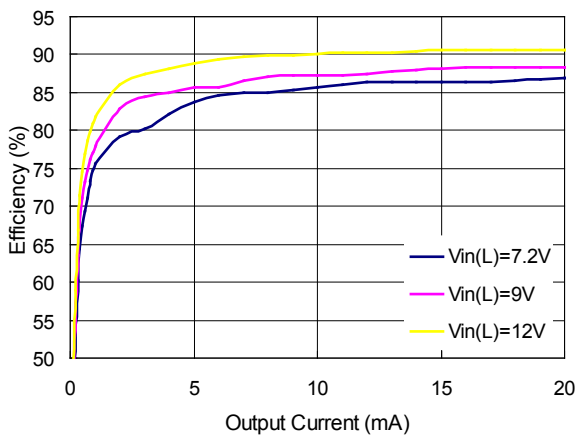
NO.EA-272-170405

**V<sub>OUT</sub>=20V, V<sub>IN</sub>=3.6V**

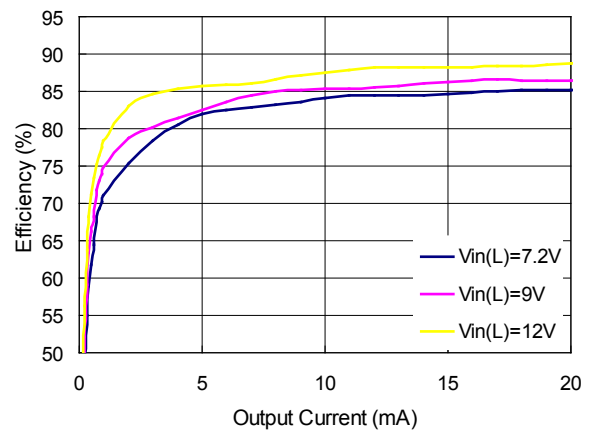


## Typical Applications with Using 5.5V or Greater

**V<sub>OUT</sub>=15V, L=10μH (LQH32CN100K53)**

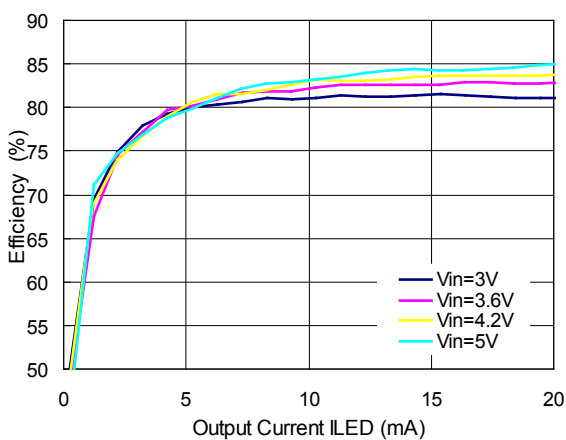


**V<sub>OUT</sub>=20V, L=10μH (LQH32CN100K53)**

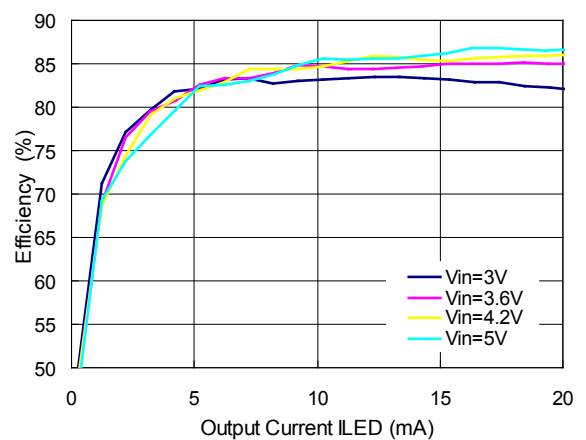


## 2) Efficiency vs. Output Current Characteristics (R1205N823B/C)

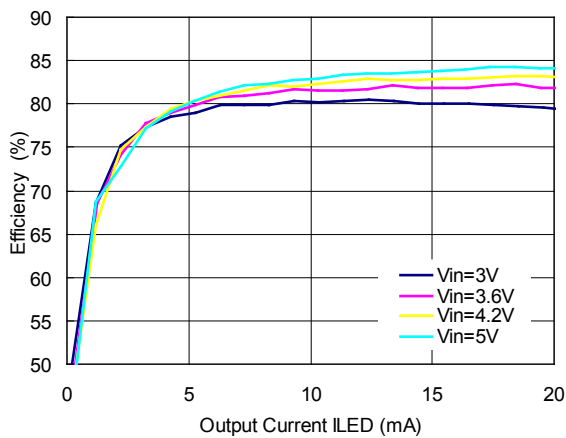
**4LED, L=10μH (LQH32CN100K53)**



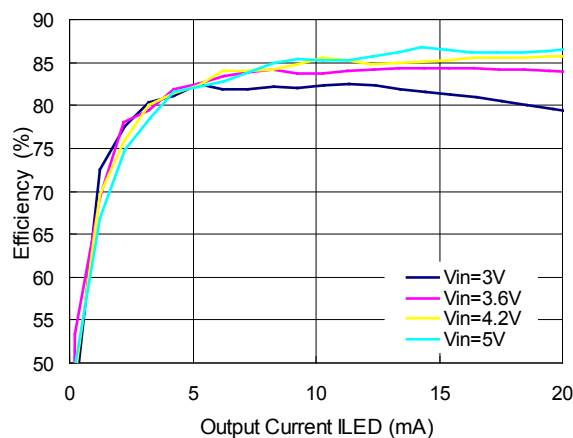
**4LED, L=22μH (LQH32CN220K53)**



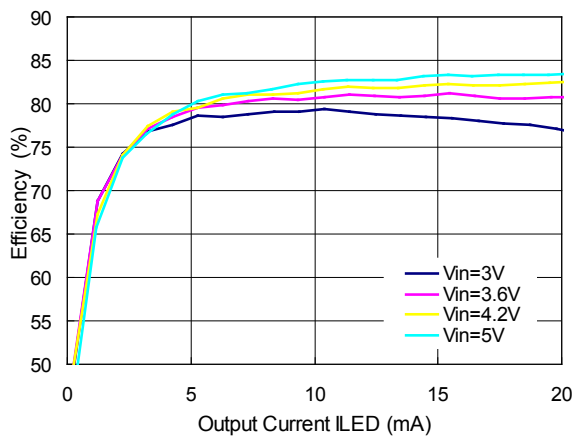
5LED, L=10 $\mu$ H (LQH32CN100K53)



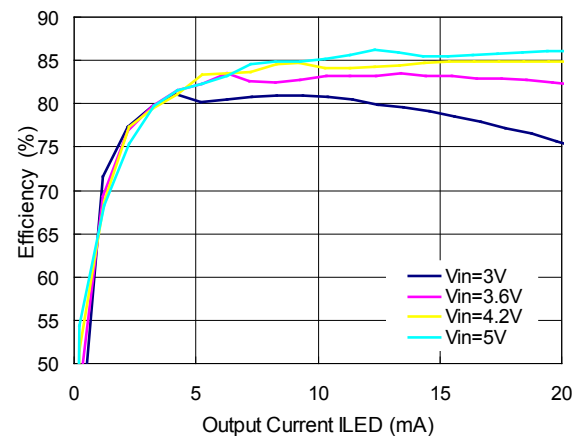
5LED, L=22 $\mu$ H (LQH32CN220K53)



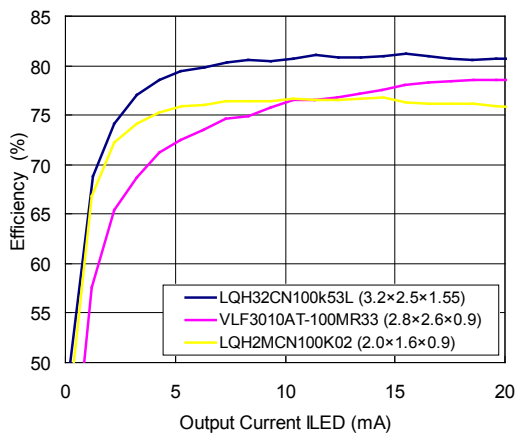
6LED, L=10 $\mu$ H (LQH32CN100K53)



6LED, L=22 $\mu$ H (LQH32CN220K53)



6LED, V<sub>IN</sub>=3.6V

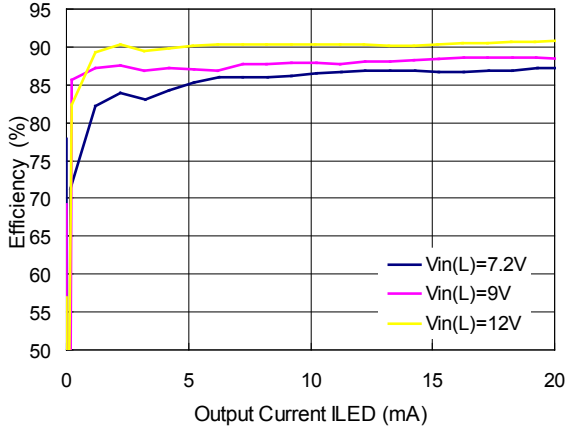


# R1205x

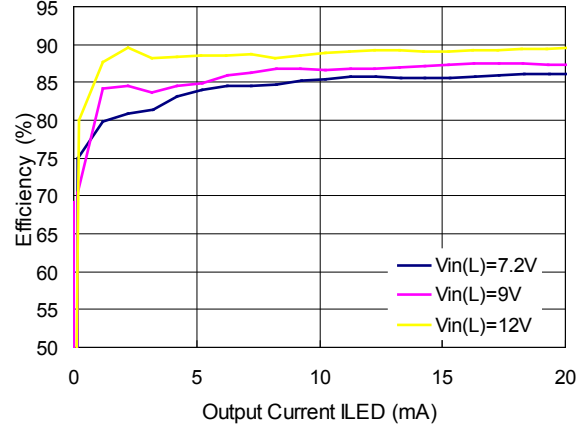
NO.EA-272-170405

## Typical Applications with Using 5.5V or Greater

### 5LED, $V_{IN(IC)}=3.6V$

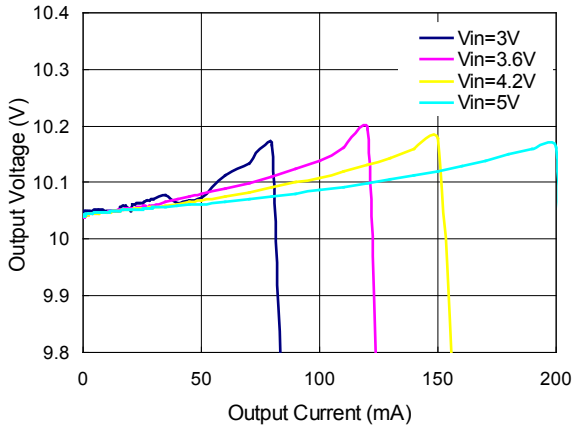


### 6LED, $V_{IN(IC)}=3.6V$

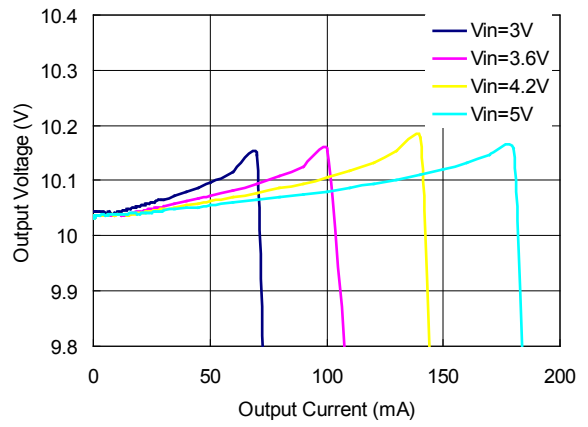


## 3) Output Voltage vs. Output Current (R1205N823A)

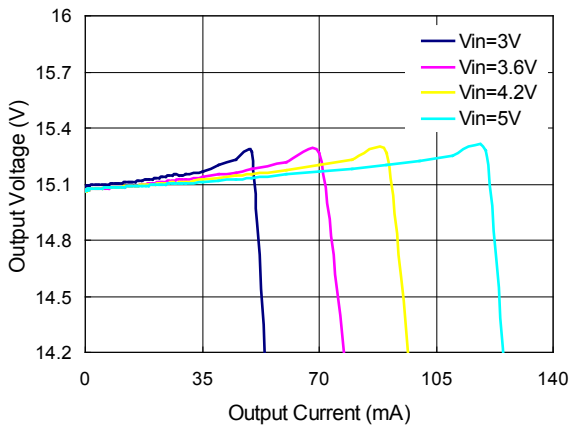
### $V_{OUT}=10V, L=10\mu H$ (LQH32CN100K53)



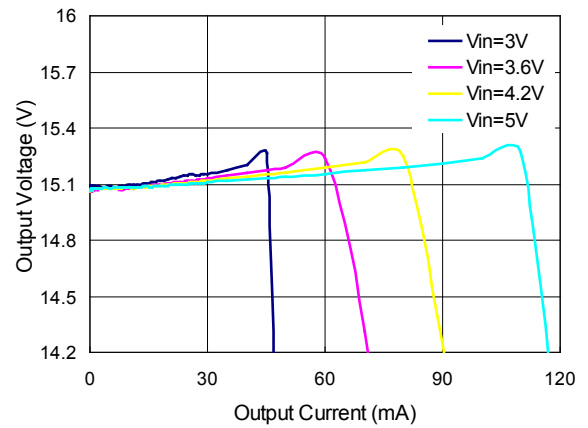
### $V_{OUT}=10V, L=22\mu H$ (LQH32CN220K53)



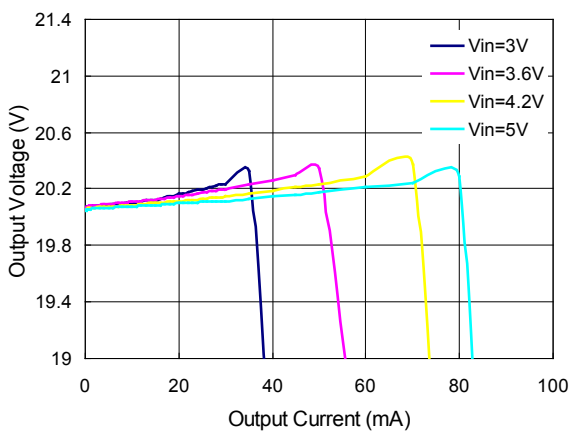
### $V_{OUT}=15V, L=10\mu H$ (LQH32CN100K53)



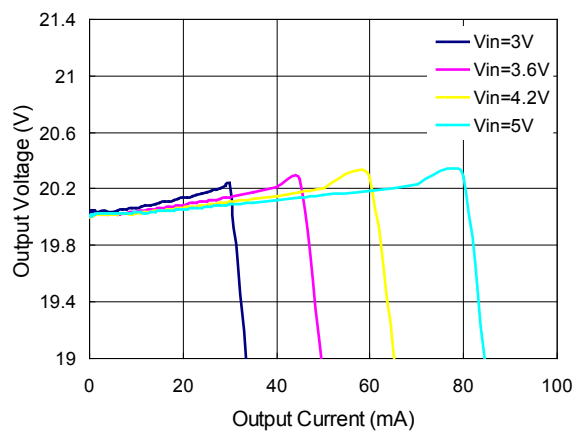
### $V_{OUT}=15V, L=22\mu H$ (LQH32CN220K53)



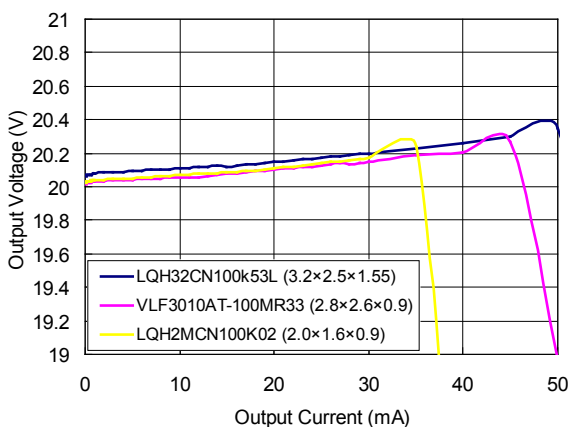
**V<sub>OUT</sub>=20V, L=10μH (LQH32CN100K53)**



**V<sub>OUT</sub>=20V, L=22μH (LQH32CN220K53)**

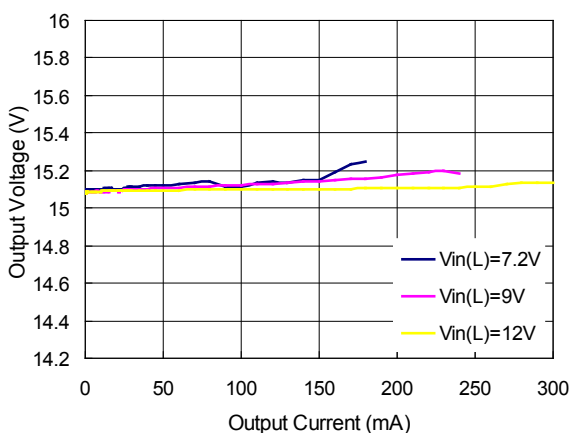


**V<sub>OUT</sub>=20V, V<sub>IN</sub>=3.6V**

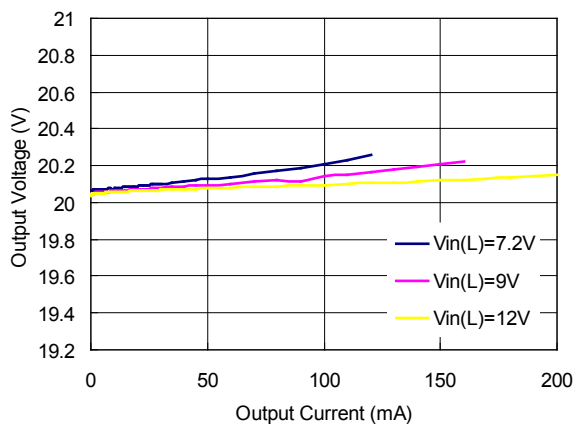


**Typical Applications with Using 5.5V or Greater**

**V<sub>OUT</sub>=15V, L=10μH (LQH32CN100K53)**



**V<sub>OUT</sub>=20V, L=10μH (LQH32CN100K53)**

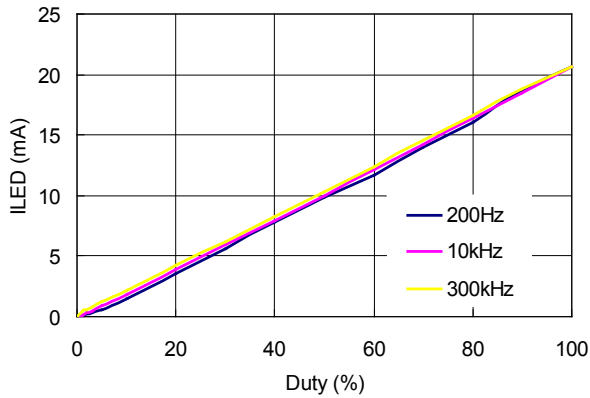


# R1205x

NO.EA-272-170405

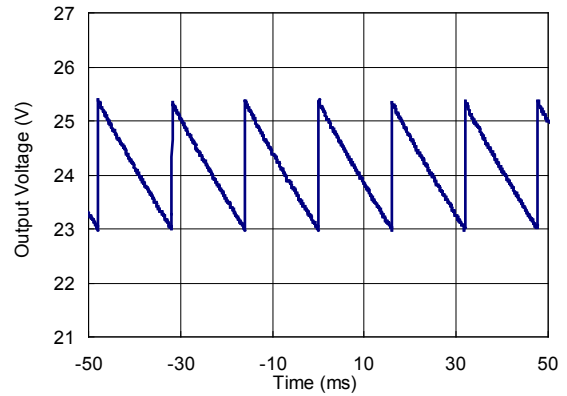
## 4) Duty vs. ILED

R1205N823B/C



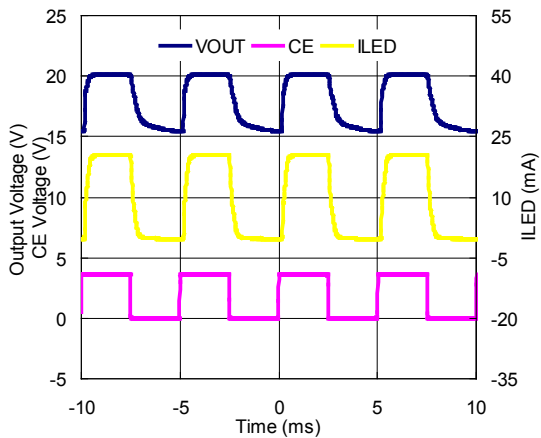
## 5) OVP Output Waveform

R1205N823B/C

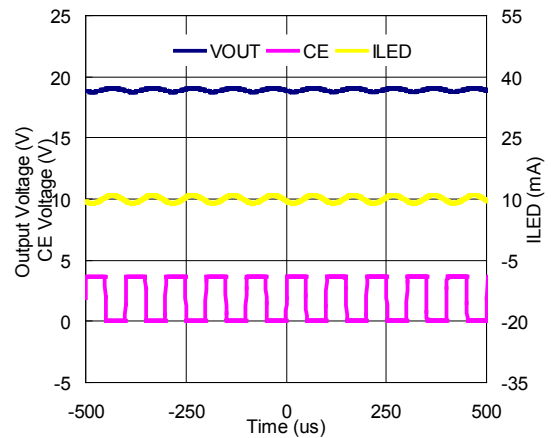


## 6) Waveform (6LED)

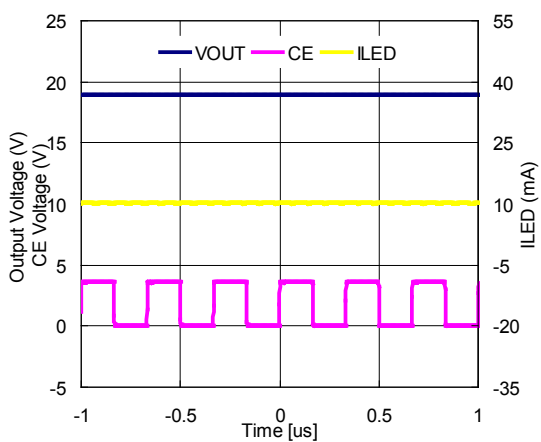
R1205N823B/C (CE Freq=200Hz)



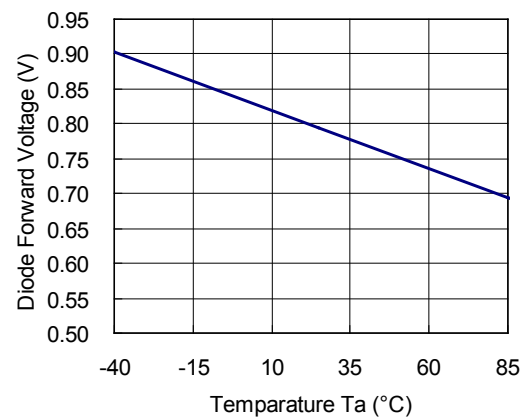
R1205N823B/C (CE Freq=10KHz)



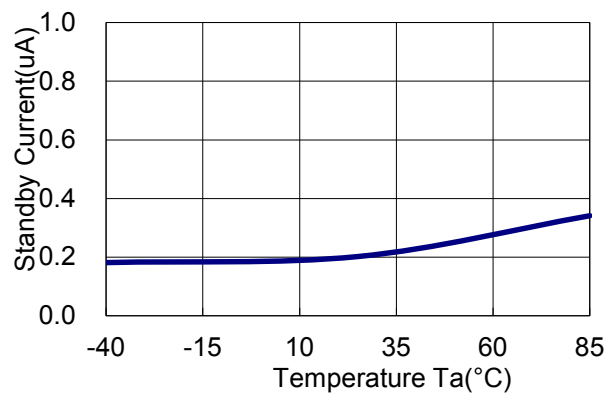
R1205N823B/C (CE Freq=300KHz)



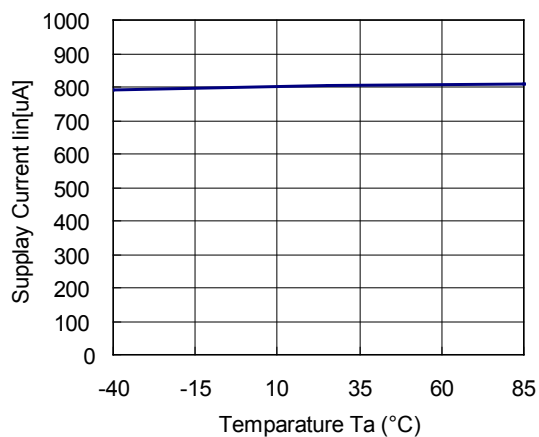
## 7) Diode Forward Voltage vs. Temperature



8) Standby Current vs. Temperature

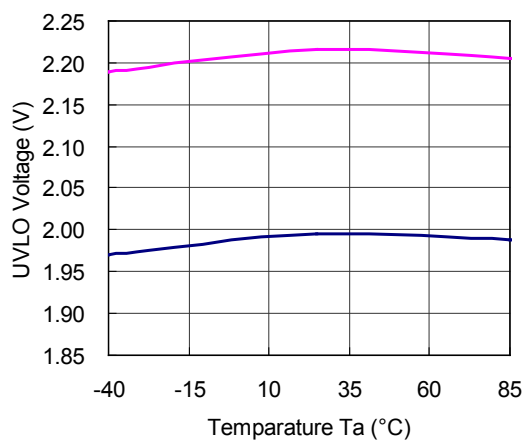


9) Supply Current vs. Temperature

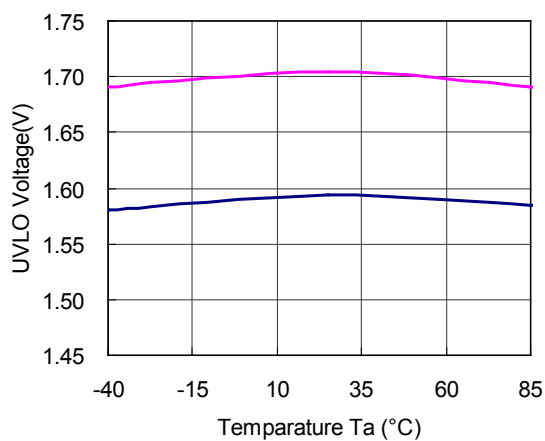


10) UVLO Output Voltage vs. Temperature

R1205x8xxA



R1205x8xxB/C



---

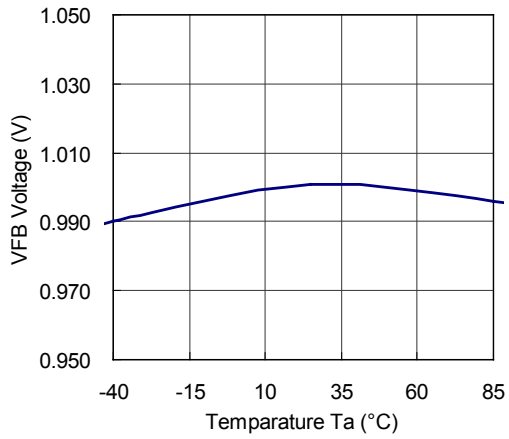
# R1205x

---

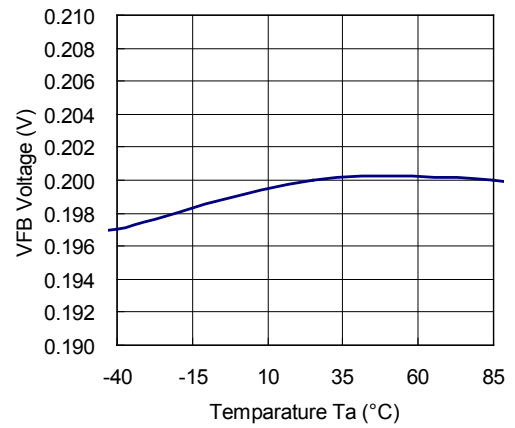
NO.EA-272-170405

## 11) VFB Voltage vs. Temperature

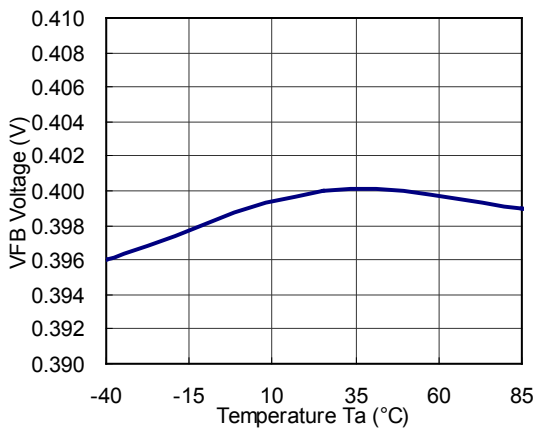
### R1205x8xxA



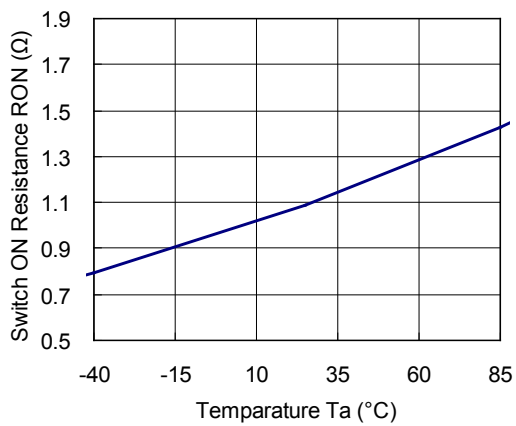
### R1205x8xxB



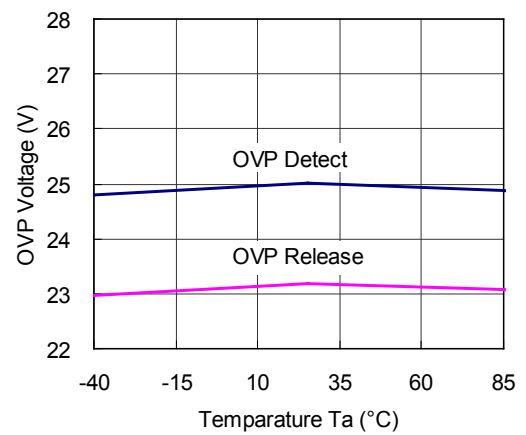
### R1205x8xxC



## 12) Switch ON Resistance RON vs. Temperature

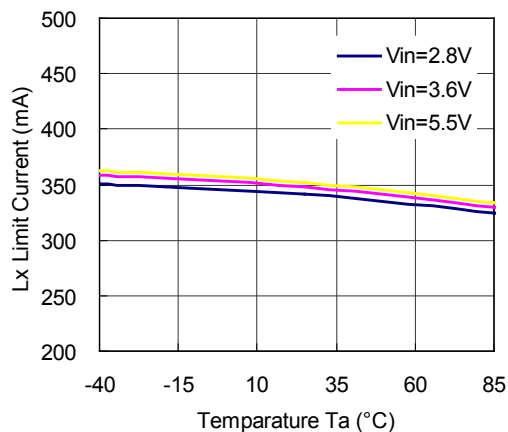


## 13) OVP Voltage vs. Temperature

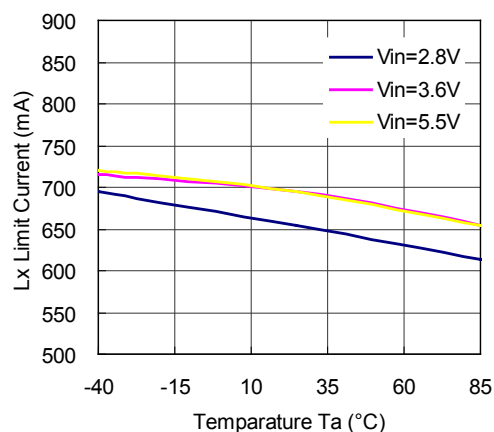


14) LX Current Limit vs. Temperature

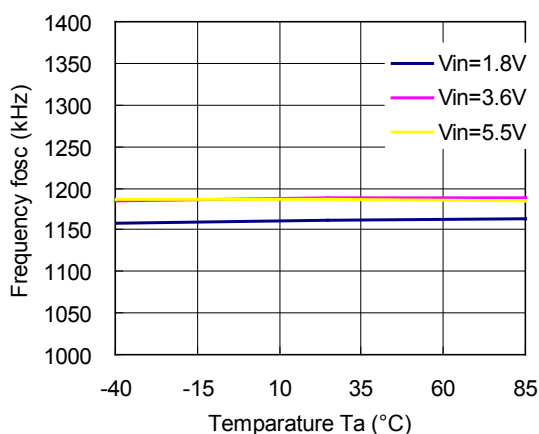
R1205x81xx



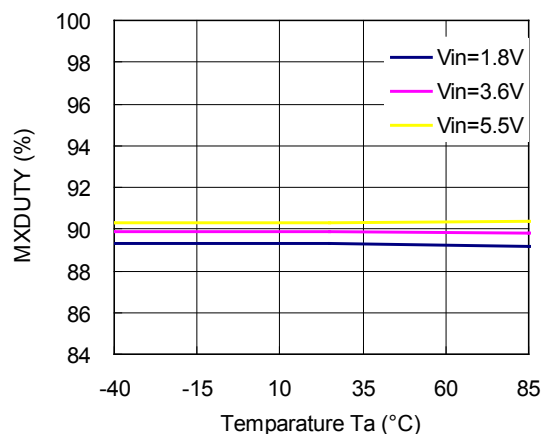
R1205x82xx



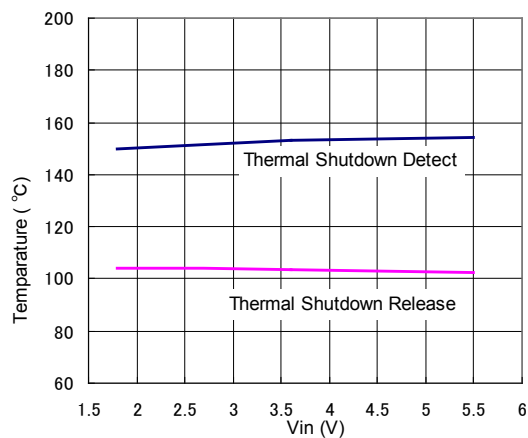
15) Oscillator Frequency vs. Temperature



16) Maxduty vs. Temperature



17) Thermal Shutdown Detect / Release Temperature vs. Input Voltage



The power dissipation of the package is dependent on PCB material, layout, and environmental conditions. The following conditions are used in this measurement.

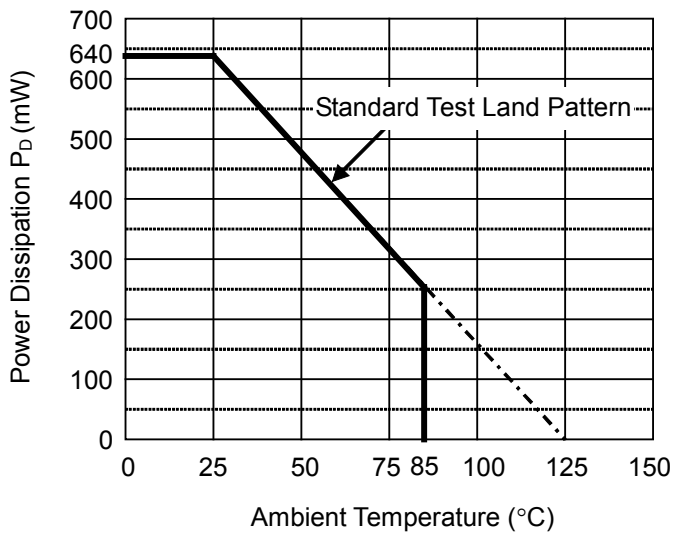
**Measurement Conditions**

	<b>Standard Test Land Pattern</b>
Environment	Mounting on Board (Wind Velocity = 0 m/s)
Board Material	Glass Cloth Epoxy Plastic (Double-Sided Board)
Board Dimensions	40 mm × 40 mm × 1.6 mm
Copper Ratio	Top Side: Approx. 50% Bottom Side: Approx. 50%
Through-holes	φ 0.5 mm × 32 pcs

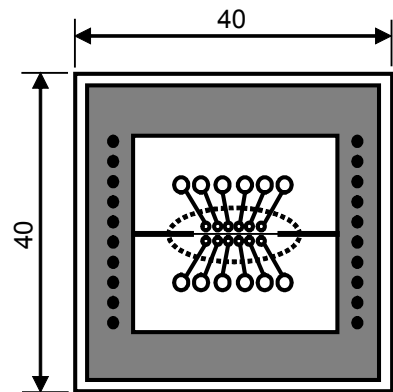
**Measurement Result**

(Ta = 25°C, Tjmax = 125°C)

	<b>Standard Test Land Pattern</b>
Power Dissipation	640 mW
Thermal Resistance	$\theta_{ja} = (125 - 25^\circ\text{C}) / 0.64 \text{ W} = 156^\circ\text{C/W}$ $\theta_{jc} = 23^\circ\text{C/W}$



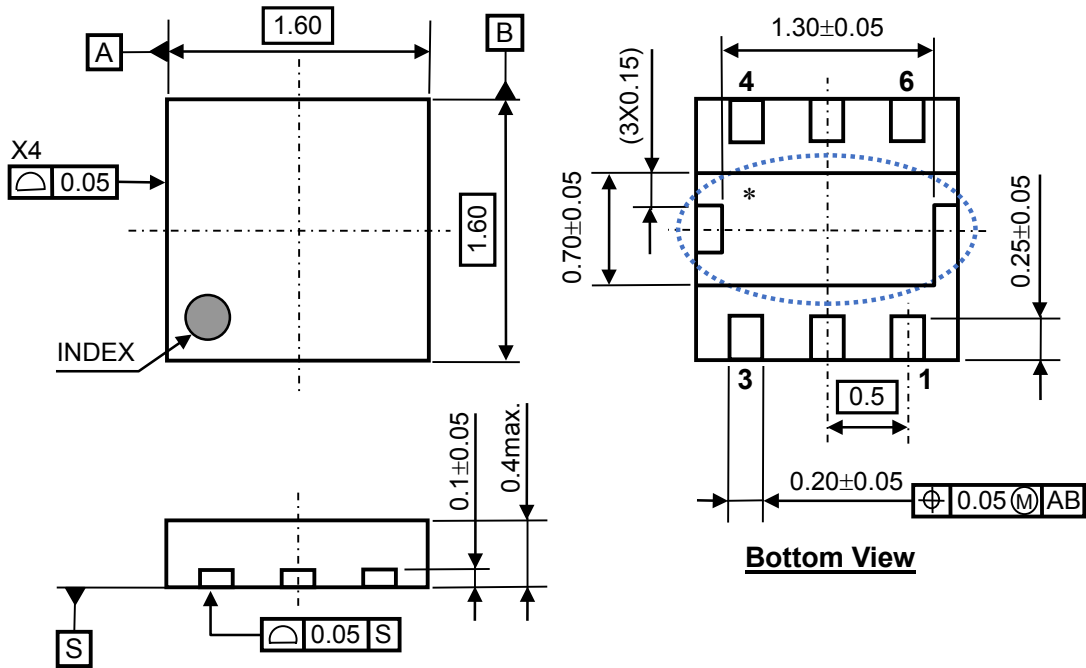
**Power Dissipation vs. Ambient Temperature**



**Measurement Board Pattern**

○ IC Mount Area (mm)

**Measurement Board Pattern**



DFN1616-6B Package Dimensions (Unit: mm)

\* The tab on the bottom of the package shown by blue circle is a substrate potential (GND). It is recommended that this tab be connected to the ground plane pin on the board but it is possible to leave the tab floating.

The power dissipation of the package is dependent on PCB material, layout, and environmental conditions. The following conditions are used in this measurement.

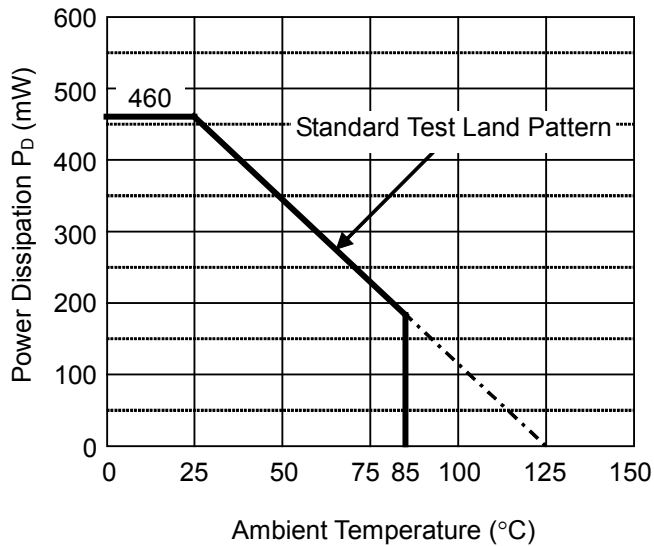
**Measurement Conditions**

	<b>Standard Test Land Pattern</b>
Environment	Mounting on Board (Wind Velocity = 0 m/s)
Board Material	Glass Cloth Epoxy Plastic (Double-Sided Board)
Board Dimensions	40 mm × 40 mm × 1.6 mm
Copper Ratio	Top Side: Approx. 50% Bottom Side: Approx. 50%
Through-holes	φ 0.5 mm × 44 pcs

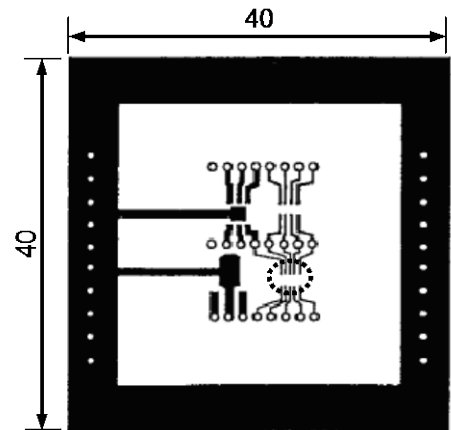
**Measurement Result**

(Ta = 25°C, Tjmax = 125°C)

	<b>Standard Test Land Pattern</b>
Power Dissipation	460 mW
Thermal Resistance	$\theta_{ja} = (125 - 25^\circ\text{C}) / 0.46 \text{ W} = 217^\circ\text{C/W}$ $\theta_{jc} = 40^\circ\text{C/W}$

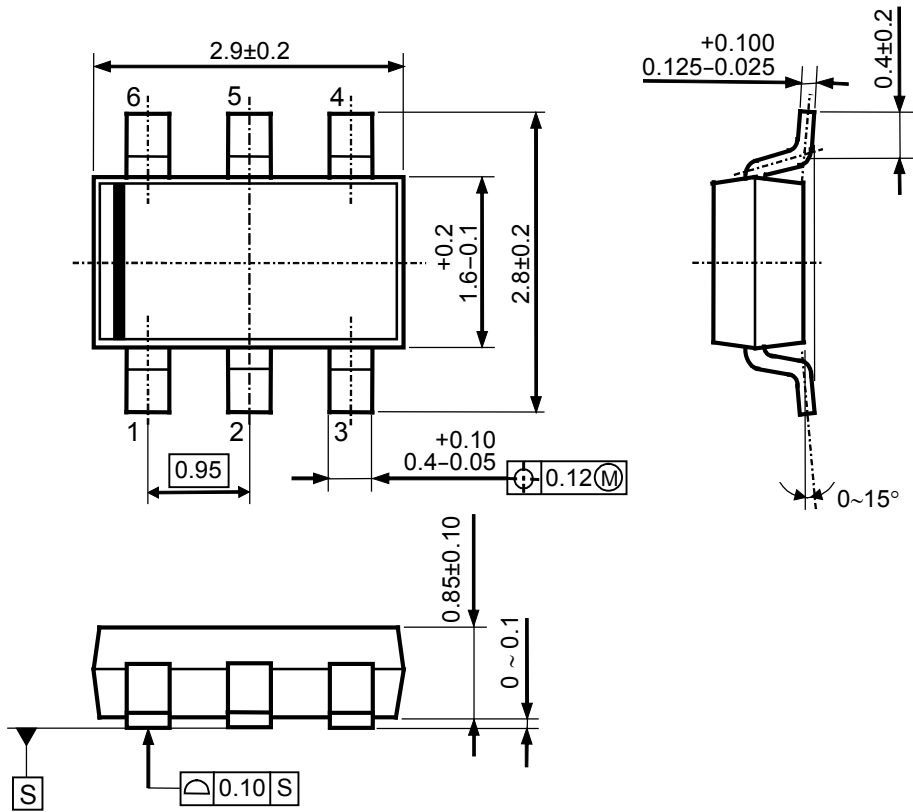


**Power Dissipation vs. Ambient Temperature**



○ IC Mount Area (mm)

**Measurement Board Pattern**



TSOT-23-6 Package Dimensions (Unit: mm)



1. The products and the product specifications described in this document are subject to change or discontinuation of production without notice for reasons such as improvement. Therefore, before deciding to use the products, please refer to Ricoh sales representatives for the latest information thereon.
2. The materials in this document may not be copied or otherwise reproduced in whole or in part without prior written consent of Ricoh.
3. Please be sure to take any necessary formalities under relevant laws or regulations before exporting or otherwise taking out of your country the products or the technical information described herein.
4. The technical information described in this document shows typical characteristics of and example application circuits for the products. The release of such information is not to be construed as a warranty of or a grant of license under Ricoh's or any third party's intellectual property rights or any other rights.
5. The products listed in this document are intended and designed for use as general electronic components in standard applications (office equipment, telecommunication equipment, measuring instruments, consumer electronic products, amusement equipment etc.). Those customers intending to use a product in an application requiring extreme quality and reliability, for example, in a highly specific application where the failure or misoperation of the product could result in human injury or death (aircraft, spacevehicle, nuclear reactor control system, traffic control system, automotive and transportation equipment, combustion equipment, safety devices, life support system etc.) should first contact us.
6. We are making our continuous effort to improve the quality and reliability of our products, but semiconductor products are likely to fail with certain probability. In order to prevent any injury to persons or damages to property resulting from such failure, customers should be careful enough to incorporate safety measures in their design, such as redundancy feature, fire containment feature and fail-safe feature. We do not assume any liability or responsibility for any loss or damage arising from misuse or inappropriate use of the products.
7. Anti-radiation design is not implemented in the products described in this document.
8. The X-ray exposure can influence functions and characteristics of the products. Confirm the product functions and characteristics in the evaluation stage.
9. WLCSP products should be used in light shielded environments. The light exposure can influence functions and characteristics of the products under operation or storage.
10. There can be variation in the marking when different AOI (Automated Optical Inspection) equipment is used. In the case of recognizing the marking characteristic with AOI, please contact Ricoh sales or our distributor before attempting to use AOI.
11. Please contact Ricoh sales representatives should you have any questions or comments concerning the products or the technical information.



**Ricoh is committed to reducing the environmental loading materials in electrical devices with a view to contributing to the protection of human health and the environment.**

Ricoh has been providing RoHS compliant products since April 1, 2006 and Halogen-free products since April 1, 2012.

**RICOH** RICOH ELECTRONIC DEVICES CO., LTD.

<http://www.e-devices.ricoh.co.jp/en/>

#### Sales & Support Offices

##### **RICOH ELECTRONIC DEVICES CO., LTD.**

**Higashi-Shinagawa Office (International Sales)**  
3-32-3, Higashi-Shinagawa, Shinagawa-ku, Tokyo 140-8655, Japan  
Phone: +81-3-5479-2857 Fax: +81-3-5479-0502

##### **RICOH EUROPE (NETHERLANDS) B.V.**

**Semiconductor Support Centre**  
Prof. W.H. Keesomlaan 1, 1183 DJ Amstelveen, The Netherlands  
Phone: +31-20-5474-309

##### **RICOH INTERNATIONAL B.V. - German Branch**

**Semiconductor Sales and Support Centre**  
Oberrather Strasse 6, 40472 Düsseldorf, Germany  
Phone: +49-211-6546-0

##### **RICOH ELECTRONIC DEVICES KOREA CO., LTD.**

3F, Haesung Bldg, 504, Teheran-ro, Gangnam-gu, Seoul, 135-725, Korea  
Phone: +82-2-2135-5700 Fax: +82-2-2051-5713

##### **RICOH ELECTRONIC DEVICES SHANGHAI CO., LTD.**

Room 403, No.2 Building, No.690 Bibo Road, Pu Dong New District, Shanghai 201203, People's Republic of China  
Phone: +86-21-5027-3200 Fax: +86-21-5027-3299

##### **RICOH ELECTRONIC DEVICES CO., LTD.**

**Taipei office**  
Room 109, 10F-1, No.51, Hengyang Rd., Taipei City, Taiwan (R.O.C.)  
Phone: +886-2-2313-1621/1622 Fax: +886-2-2313-1623