

Rexroth Super Linear Bushing

Super Linear Bushing, 0755

Closed type - for use on unsupported shaft

Structural design

- Lightweight resin retainer and outer sleeve
- Hardened and ground steel bearing load plates
- Balls made of high quality anti-friction bearing steel
- With or without integral seals
- Self-aligning to $\pm 0.5^\circ$



Ordering Data

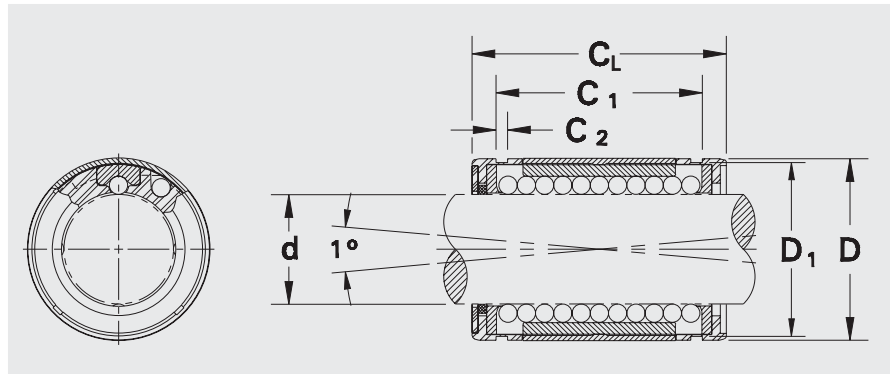
Nominal Shaft Diameter (inches)	Part Numbers		Mass (lb)	Corresponding External Retaining Ring ⁽¹⁾	
	without seals	with two seals		New Part Number	Old Part Number
0.2500	R0755 004 00	R0755 204 00	0.01	R987 145 915	XR-4A
0.3750	R0755 006 00	R0755 206 00	0.01	R987 145 916	XR-6A
0.5000	R0755 008 00	R0755 208 00	0.04	R987 145 917	XR-8A
0.6250	R0755 010 00	R0755 210 00	0.10	R987 145 918	XR-10A
0.7500	R0755 012 00	R0755 212 00	0.12	R987 145 910	XR-12A
1.0000	R0755 016 00	R0755 216 00	0.26	R987 145 911	XR-16A
1.2500	R0755 020 00	R0755 220 00	0.49	R987 145 919	XR-20A
1.5000	R0755 024 00	R0755 224 00	0.75	R987 145 912	XR-24A
2.0000	R0755 032-00	R0755 232 00	1.39	R987 145 913	XR-32A

(Table 16)

Consult factory for details and availability:
Single seal versions R0755 1.. ..

(1) See page 66 for retaining ring dimensions

Dimensions and Specifications



(Figure 6)

Dimensions (inches)

Bore d	D	C _{L(1)}	C ₁	C ₂	D ₁
.2500/.2495	0.5000	0.7500	0.5150	0.0390	0.4687
.3750/.3745	0.6250	0.8750	0.7030	0.0390	0.5880
.5000/.4995	0.8750	1.2500	1.0320	0.0459	0.8209
.6250/.6245	1.1250	1.5000	1.1120	0.0559	1.0590
.7500/.7495	1.2500	1.6250	1.2720	0.0559	1.1760
1.0000/.9995	1.5625	2.2500	1.8860	0.0679	1.4687
1.2500/1.2494	2.0000	2.6250	2.0110	0.0679	1.8859
1.5000/1.4994	2.3750	3.0000	2.4220	0.0859	2.2389
2.0000/1.9992	3.0000	4.0000	3.2060	0.1029	2.8379

(Table 20)

Specifications

Nominal Shaft Diameter (in.)	Recommended Housing Bore ⁽²⁾	Load Capacity ⁽³⁾		No. of Ball Circuits
		dyn. C (lbf)	stat. C _o (lbf)	
0.2500	0.5000 / 0.5005	60	80	4
0.3750	0.6250 / 0.6255	95	120	4
0.5000	0.8750 / 0.8755	230	290	4
0.6250	1.1250 / 1.1255	400	502	5
0.7500	1.2500 / 1.2505	470	592	6
1.0000	1.5625 / 1.5630	850	1062	6
1.2500	2.0000 / 2.0008	1230	1532	6
1.5000	2.3750 / 2.3760	1483	1852	6
2.0000	3.0000 / 3.0010	2430	3038	6

(Table 21)

Notes:

(1) Length tolerance -
Bore size -

∅ 0.2500- 0.3750	+ 0/ -0.015"
∅ 0.5000- 1.0000	+ 0/ -0.020"
∅ 1.2500	+ 0/ -0.025"
∅ 1.5000	+ 0/ -0.030"
∅ 2.0000	+ 0/ -0.040"

(2) Transition fit

(3) See table 2 on page 7 for load
correction factors