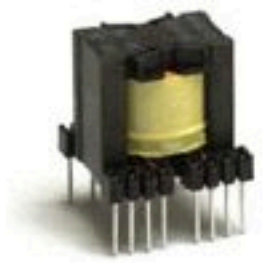


The Precision Factor



[Click to enlarge](#)

Precision Inc has developed switchmode transformers utilizing industry standard configurations, such as materials and footprints. These "standard" switchmode transformers are designed around a sizing factor number. To determine which core style will work in your application we offer a [Product Family Calculator](#) to assist in the selection.

If you prefer the PQ style core, the sizing factor [Calculator](#) is located below.

Features:

- High power density/volume
- Small footprint
- Good for gapped or ungapped applications

Mechanical Characteristics:

Figure 1: 14 Pin

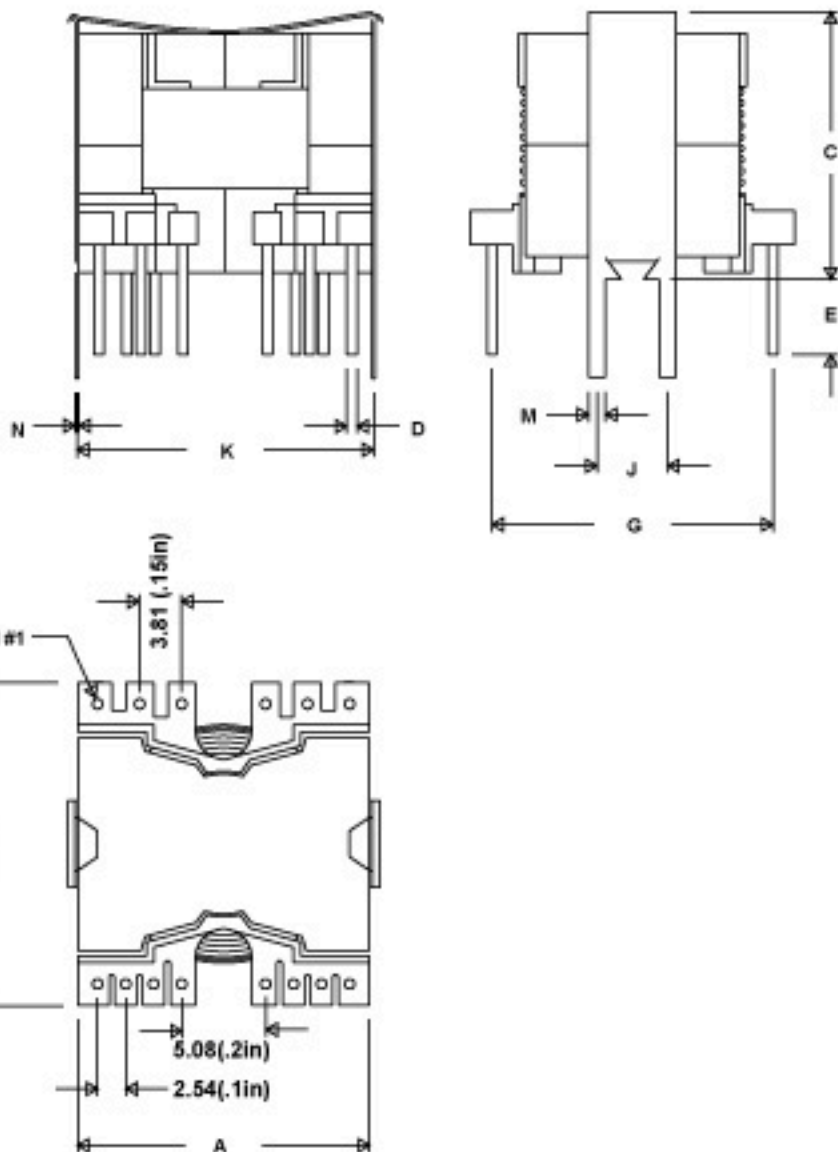
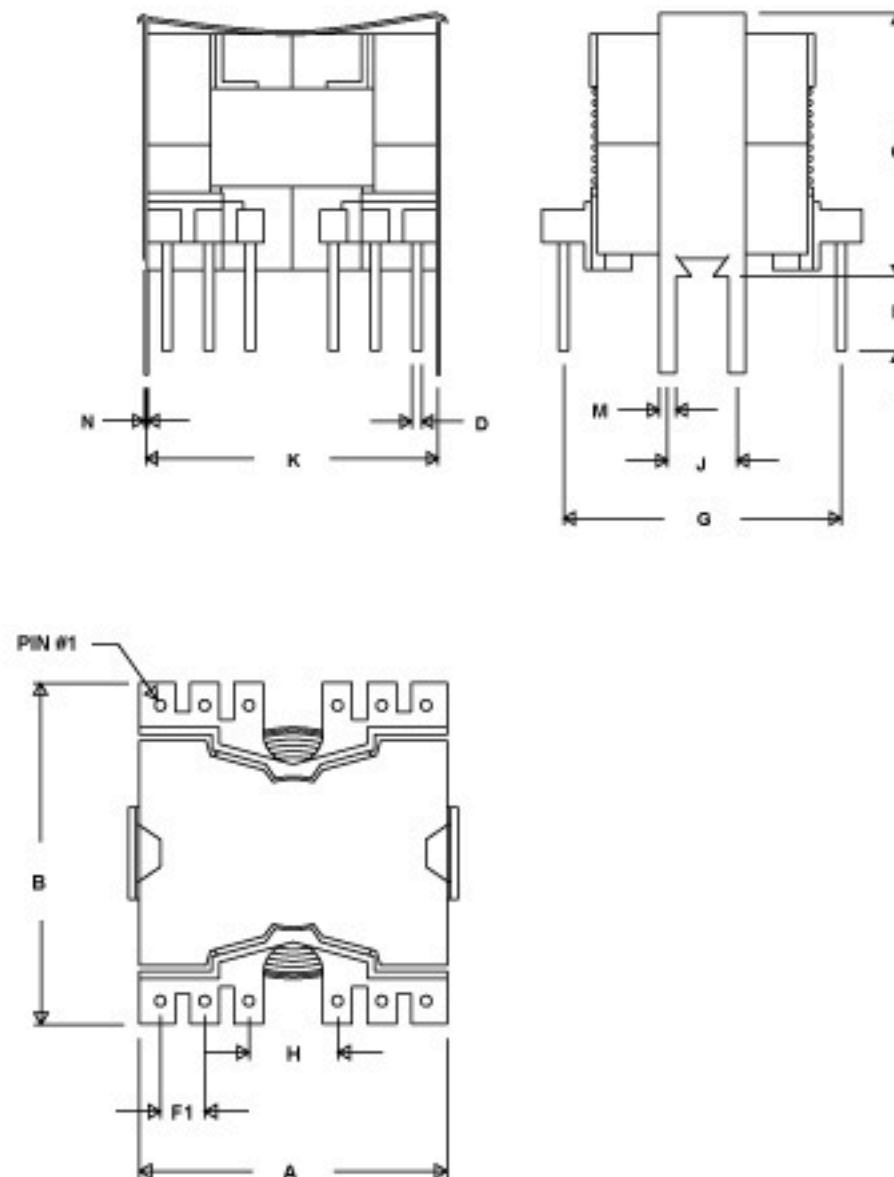


Figure 2: 12 Pin



* For standard product: Please select the quantity for each item you wish to order or receive a quote and click the 'Add To Quote' button below.

* For custom product: Please click 'Custom' button below. You will be directed to a page where you can add custom product information and attach prints.

Model	Length (A)	Width (B)	Height (C)	Pin Spacing (F1)	Pin Row (G)	No. of Pins	Sizing Factor 330Khz	Sizing Factor 800Khz
PQ2016	23.2 mm (.913 in)	23.4 mm (.921 in)	21.1 mm (.831 in)	See Figure 1	20.3 mm (.800 in)	14	up to 150	up to 210
PQ2020	23.2 mm (.913 in)	23.4 mm (.921 in)	25.1 mm (.988 in)	See Figure 1	20.3 mm (.800 in)	14	up to 210	up to 280
PQ2620	26.7 mm (1.051 in)	29.8 mm (1.173 in)	25.5 mm (1.004 in)	3.81 mm (.150 in)	25.4 mm (1.000 in)	12	up to 380	up to 500
PQ2625	26.7 mm (1.051 in)	29.8 mm (1.173 in)	30.1 mm (1.185 in)	3.81 mm (.150 in)	25.4 mm (1.000 in)	12	up to 420	up to 580
PQ3220	32.2 mm (1.268 in)	34.3 mm (1.350 in)	26.2 mm (1.031 in)	5.08 mm (.200 in)	30.5 mm (1.200 in)	12	up to 540	up to 700
PQ3230	32.2 mm (1.268 in)	34.3 mm (1.350 in)	36 mm (1.417 in)	5.08 mm (.200 in)	30.5 mm (1.200 in)	12	up to 800	up to 1100
PQ3535	35.1 mm (1.382 in)	39.7 mm (1.563 in)	40.3 mm (1.587 in)	5.08 mm (.200 in)	35.6 mm (1.400 in)	12	up to 1100	up to 1500
PQ4040	40.1 mm (1.579 in)	42.1 mm (1.657 in)	45.1 mm (1.776 in)	5.08 mm (.200 in)	38.1 mm (1.500 in)	12	up to 1500	up to 2200

PRECISION, INC.

Sizing Factor Calculator

Step 1

Enter required output power in Watts DC:

SIZING FACTOR is:

Calculate

Back

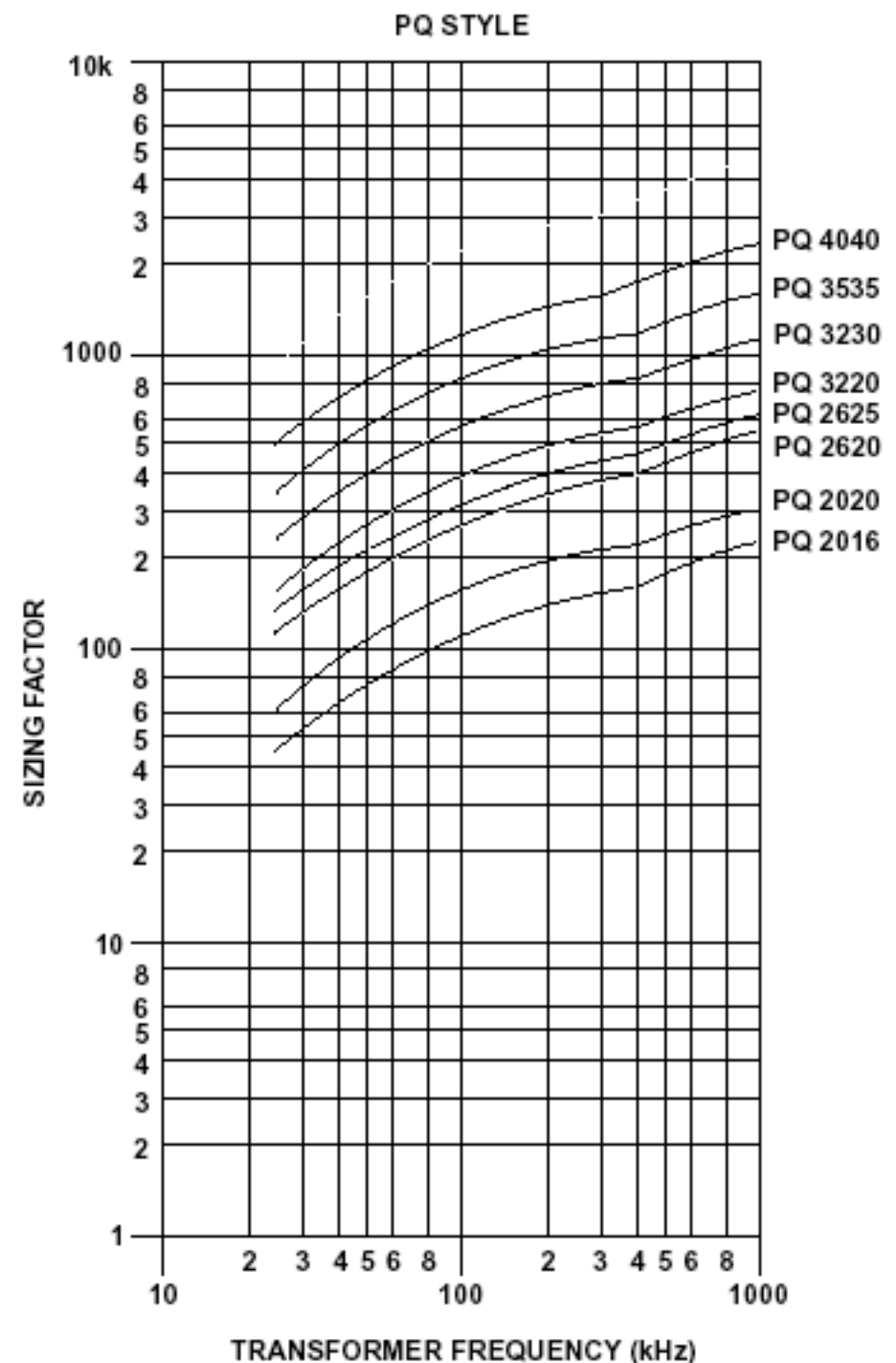
Step 2

Select circuit topology:

Step 3

SIZING FACTOR is:

Step 3 of 3



Once the core has been selected please contact our design engineers to assist with the transformer design and manufacturability issues such as; turns ratio, dielectric, wire breakout, pin termination, IEC margins, Rohs, REACH and other construction related requirements.

Sizing factor notes that apply to the chart above:

1. Sizing constraints: Temperature rise is 40°C, the ambient temperature is 50°C and it does not include IEC Spacing.
2. Increasing the operational frequency will reduce the sizing factor number and transformer size.
3. Increasing the temperature rise allowed in the part will reduce sizing factor number and transformer size.
4. Adding IEC dielectric requirements will increase the sizing factor number and transformer size.