

# Type PF 55 °C Photoflash, High-Energy, Long Life, 500 V, Aluminum



## High Energy, Long-Life Screw-Terminals Case Style

Type PF can withstand more than 100,000 full discharges in typical photoflash applications, and Type PF also delivers the higher energy density possible with a rated voltage of 500 V and higher capacitance values in screw-terminal style cans. Type PF is right

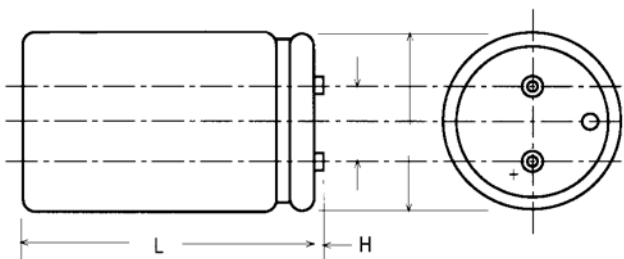
## Highlights

- 100,000 flash capability
- 1 joule per cc energy density

## Specifications

Capacitance Range	600 to 2100 $\mu$ F
Capacitance Tolerance	-10% to 20%.
Rated Voltage	500 Vdc
Operating Temperature Range	-20 °C to 55 °C
Leakage Current	1 times C in $\mu$ A maximum
Dissipation Factor @ 120 Hz, +25 °C	15% max. @ 25 °C & 120 Hz
Discharge Life	100,000 minimum at 30 s interval $\Delta$ Capacitance $\pm$ 10% ESR 150% of limit DCL 150% of limit
Vibration	10 to 55 Hz; 0.06" and 10 g max, 6 h vertical, 2 h. ea. 2 other planes
Shelf Life Test	500 h @ 55 °C $\Delta$ Capacitance $\pm$ 10% ESR 150% of limit DCL 150% of limit
RoHS Compliant	

## Outline Drawings

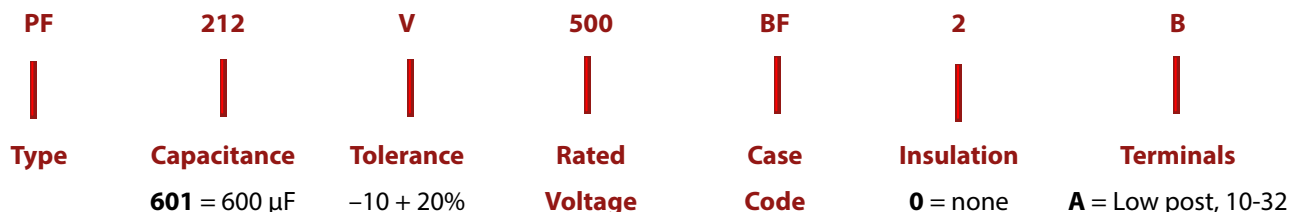


Terminal Styles	Code	H		Thread
		(in)	(mm)	
Low Post	A	0.094	2.39	10-32
High Post	B	0.281	7.14	10-32

# Type PF 55 °C Photoflash, High-Energy, Long Life, 500 V, Aluminum Insulated Case Dimensions

Case Code	Diam. (D)		Length (L)		Terminals (S)		Typical Weight	
	±0.031	±0.062	±0.062	±1.57	±0.015	±0.38	oz	g
	Inches	mm	Inches	mm	Inches	mm		
AK	1.399	35.5	1.687	42.8	0.500	12.7	1.9	53.9
AA	1.399	35.5	2.187	55.5	0.500	12.7	2.0	56.7
AH	1.399	35.5	2.687	68.2	0.500	12.7	2.7	76.5
AB	1.399	35.5	3.187	80.9	0.500	12.7	3.3	93.6
AJ	1.399	35.5	3.687	93.6	0.500	12.7	3.8	107.7
AC	1.399	35.5	4.187	106.3	0.500	12.7	4.4	124.7
AD	1.399	35.5	4.687	119.0	0.500	12.7	5.1	144.6
AE	1.399	35.5	5.187	131.7	0.500	12.7	5.7	161.6
AF	1.399	35.5	5.687	144.4	0.500	12.7	6.4	181.4
EA	1.774	45.1	2.187	55.5	0.750	19.1	2.7	76.5
EH	1.774	45.1	2.687	68.2	0.750	19.1	3.8	107.7
EB	1.774	45.1	3.187	80.9	0.750	19.1	5.1	144.6
EJ	1.774	45.1	3.687	93.6	0.750	19.1	6.8	192.8
EC	1.774	45.1	4.187	106.3	0.750	19.1	8.1	229.6
ED	1.774	45.1	4.687	119.0	0.750	19.1	9.9	280.7
EE	1.774	45.1	5.187	131.7	0.750	19.1	9.5	269.3
EF	1.774	45.1	5.687	144.4	0.750	19.1	10.5	297.7
BA	2.024	51.4	2.187	55.5	0.875	22.2	2.7	76.5
BH	2.024	51.4	2.687	68.2	0.875	22.2	5.4	153.1
BB	2.024	51.4	3.187	80.9	0.875	22.2	6.1	172.9
BJ	2.024	51.4	3.687	93.6	0.875	22.2	6.8	192.8
BC	2.024	51.4	4.187	106.3	0.875	22.2	8.2	232.5
BD	2.024	51.4	4.687	119.0	0.875	22.2	9.6	272.1
BE	2.024	51.4	5.187	131.7	0.875	22.2	10.3	292.0
BF	2.024	51.4	5.687	144.4	0.875	22.2	13.0	368.5

## Part Numbering System



## Ratings

Cap. (μF)	Catalog Part Number	ESR Max. +25 °C, 120 Hz (Ω)	Diameter (mm) (in)	Length (mm) (in)
<b>500 Vdc (550 Vdc Surge)</b>				
600	PF601V500AJ2B	0.332	35 1.38	92 3.63
800	PF801V500AD2B	0.249	35 1.38	117 4.63
900	PF901V500EJ2B	0.221	44 1.75	92 3.63
1000	PF102V500AF2B	0.199	35 1.38	143 5.63
1200	PF122V500BJ2B	0.166	51 2.00	92 3.63

Cap. (μF)	Catalog Part Number	ESR Max. +25 °C, 120 Hz (Ω)	Diameter (mm) (in)	Length (mm) (in)
<b>500 Vdc (550 Vdc Surge)</b>				
1300	PF132V500ED2B	0.153	44 1.75	117 4.63
1600	PF162V500BD2B	0.124	51 2.00	117 4.63
1700	PF172V500EF2B	0.117	44 1.75	143 5.63
2100	PF212V500BF2B	0.095	51 2.00	143 5.63

---

**Notice and Disclaimer:** All product drawings, descriptions, specifications, statements, information and data (collectively, the "Information") in this datasheet or other publication are subject to change. The customer is responsible for checking, confirming and verifying the extent to which the Information contained in this datasheet or other publication is applicable to an order at the time the order is placed. All Information given herein is believed to be accurate and reliable, but it is presented without any guarantee, warranty, representation or responsibility of any kind, expressed or implied. Statements of suitability for certain applications are based on the knowledge that the Cornell Dubilier company providing such statements ("Cornell Dubilier") has of operating conditions that such Cornell Dubilier company regards as typical for such applications, but are not intended to constitute any guarantee, warranty or representation regarding any such matter – and Cornell Dubilier specifically and expressly disclaims any guarantee, warranty or representation concerning the suitability for a specific customer application, use, storage, transportation, or operating environment. The Information is intended for use only by customers who have the requisite experience and capability to determine the correct products for their application. Any technical advice inferred from this Information or otherwise provided by Cornell Dubilier with reference to the use of any Cornell Dubilier products is given gratis (unless otherwise specified by Cornell Dubilier), and Cornell Dubilier assumes no obligation or liability for the advice given or results obtained. Although Cornell Dubilier strives to apply the most stringent quality and safety standards regarding the design and manufacturing of its products, in light of the current state of the art, isolated component failures may still occur. Accordingly, customer applications which require a high degree of reliability or safety should employ suitable designs or other safeguards (such as installation of protective circuitry or redundancies or other appropriate protective measures) in order to ensure that the failure of an electrical component does not result in a risk of personal injury or property damage. Although all product-related warnings, cautions and notes must be observed, the customer should not assume that all safety measures are indicated in such warnings, cautions and notes, or that other safety measures may not be required.