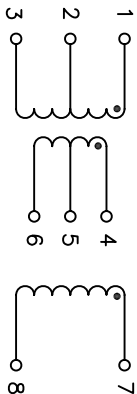


**NOTICE:** THE INFORMATION AND DATA CONTAINED HEREIN IS THE PROPERTY OF PULSE AND RESERVES ALL RIGHTS THERE TO.

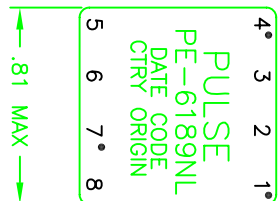
**TEST NOTES:**

UNLESS OTHERWISE SPECIFIED, TESTING IS PERFORMED AT 25°C ±5°C.

1. TURNS RATIO: 26:26:4:4:1210 ±5%
2. POLARITY: PER SCHEMATIC
3. INSULATION RESISTANCE:
  - {1-3} TO {7-8} = 10 KMEG OHMS MINIMUM AT 500 Vdc
  - {4-6} TO {7-8} = 10 KMEG OHMS MINIMUM AT 500 Vdc
  - {1-3} TO {4-6} = 10 KMEG OHMS MINIMUM AT 100 Vdc



SCHEMATIC



4. HIPOT: 2500 VRMS (1-3) TO (7-8) AND (4-6) TO (7-8) 100 VRMS (1-3) TO (4-6)
5. FUNCTIONAL TEST:
  - 5.1 SET UP EQUIPMENT PER TEST SET-UP OF FIGURE 4, SHEET 3
  - 5.2 PLUG STANDARD UNIT INTO FIXTURE C-JM-17061
  - 5.3 ADJUST POWER SUPPLY UP TO 28 Vdc
  - 5.4 DECREASE THE RESISTANCE OF THE DECADE BOX STARTING FROM THE LARGEST DECADE UNTIL FULL LOAD CURRENT OF 4 mA IS REACHED. APPROXIMATE  $R_L = 312 \text{ KOHMS} - 10 \text{ WATTS}$ .
  - 5.5 THE OUTPUT VOLTAGE SHALL BE: 1250 V NOM.
  - 5.6 ALL SUBSEQUENT UNITS TESTED SHALL HAVE AN OUTPUT VOLTAGE BETWEEN 1125 V MINIMUM AND 1375 V MAXIMUM

- \*6. INDUCED VOLTAGE TEST: APPLY 28 VRMS TO LEADS 1, 2 AT A FREQUENCY ABOVE THE FREQUENCY OF SELF OSCILLATION (SUGGEST 50 KHZ) FOR 15 SECONDS. MONITOR INPUT CURRENT AND OBSERVE THAT ABRUPT CHANGES DO NOT OCCUR. RADICAL OR ABRUPT CHANGES INDICATE ARCING OR BREAKDOWN. CURRENT MONITORING SHOULD BE ACCOMPLISHED BY A SERIES RESISTOR OR OTHER SUITABLE MEANS. IF A RESISTOR IS USED A HIGH IMPEDANCE SCOPE OR VTVM SHOULD BE USED AS A MONITORING DEVICE. (\* REF ONLY DUPLICATED CONDITIONS OF TEST NOTE 5)

7.  $I_{MAG} = 20 \text{ mA MINIMUM} - 70 \text{ mA MAXIMUM}$   
 $E = 15 \text{ V}$ ,  $t_w = 20 \text{ } \mu\text{S}$ ,  $P_{rr} = 1 \text{ KHZ}$   
 USE STD. TRANSISTOR SWITCH
8. LL: (1-3) TO (7-8) SHORT = 14  $\mu\text{H}$  MAXIMUM  
 100 KHZ AT .02 VRMS ON HP-4277A
9. CWW: (1-3) TO (4-6) = 27 pF MAXIMUM  
 (1-3) TO (7-8) = 17 pF MAXIMUM  
 100 KHZ AT .02 VRMS ON HP-4277A
10. DCR:
  - {1-3} = .78 OHMS MAXIMUM
  - {4-6} = .15 OHMS MAXIMUM
  - {7-8} = 480 OHMS MAXIMUM

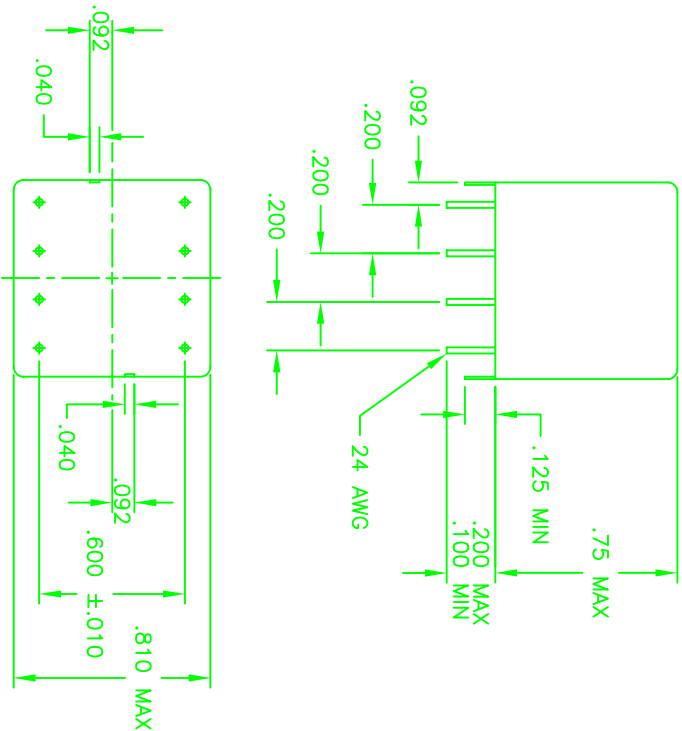


FIGURE 5 - FINAL OUTLINE

UNLESS OTHERWISE SPECIFIED, ALL DIMENSIONS AND PARTS IN THIS DRAWING ARE TO TOLERANCES AND FITS AS SHOWN.

DECIMALS ±.01  
 .XXX ±.01  
 XXXX ±.005

ANGLES ± 1°

DO NOT SCALE DRAWING

SIZE: CASE CODE: B01961  
 SCALE: NONE  
 DWG. NO.: PE-6189NL  
 SHEET: 4 OF 4  
 REV: 11