

## Han 24Ex UL-F-c

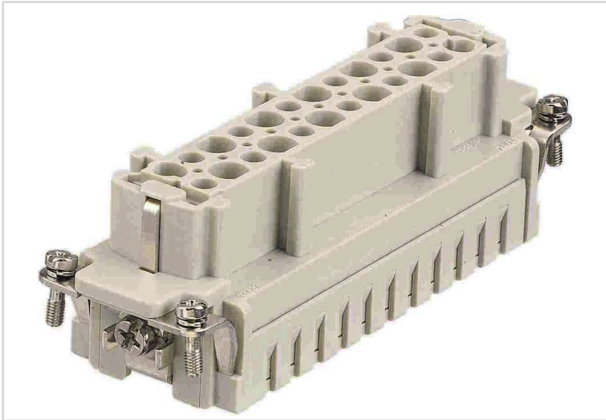


Image is for illustration purposes only. Please refer to product description.

Part number	09 36 524 2702
Specification	Han 24Ex UL-F-c
HARTING eCatalogue	<a href="https://harting.com/09365242702">https://harting.com/09365242702</a>

### Identification

Category	Inserts
Series	Han® Ex

### Version

Termination method	Crimp termination
Gender	Female
Size	24 B
Number of contacts	24
PE contact	Yes
Details	Simple Apparatus for intrinsically safe circuits Please order crimp contacts separately. for US purposes only
Details	ATTENTION! Only to be used with Han® Ex hoods and housings!

### Technical characteristics

Conductor cross-section	0.14 ... 4 mm <sup>2</sup>
Rated current	10 A
Insulation resistance	>10 <sup>10</sup> Ω
Tightening torque	1.2 Nm PE screw M4
Recommended screw driver	Slotted 0.8 x 4.5 PH2
Limiting temperature	-20 ... +40 °C
Note on the limiting temperature	Up to +70 °C in T4



Pushing Performance  
Since 1945

## Technical characteristics

Mating cycles	≥500
---------------	------

## Material properties

Material (insert)	Polycarbonate (PC)
Colour (insert)	RAL 7032 (pebble grey)
Material flammability class acc. to UL 94	V-0
RoHS	compliant
ELV status	compliant
China RoHS	e
REACH Annex XVII substances	Not contained
REACH ANNEX XIV substances	Not contained
REACH SVHC substances	Not contained
California Proposition 65 substances	Yes
California Proposition 65 substances	Lead Nickel

## Specifications and approvals

UL / CSA	UL 2237 CYJX2.E482115 CSA-C22.2 No. 213 CYJX8.E482115
----------	--

## Commercial data

Packaging size	1
Net weight	80 g
Country of origin	Germany
European customs tariff number	85366990
GTIN	5713140186873
eCl@ss	27440205 Contact insert for industrial connectors
ETIM	EC000438
UNSPSC 24.0	39121522