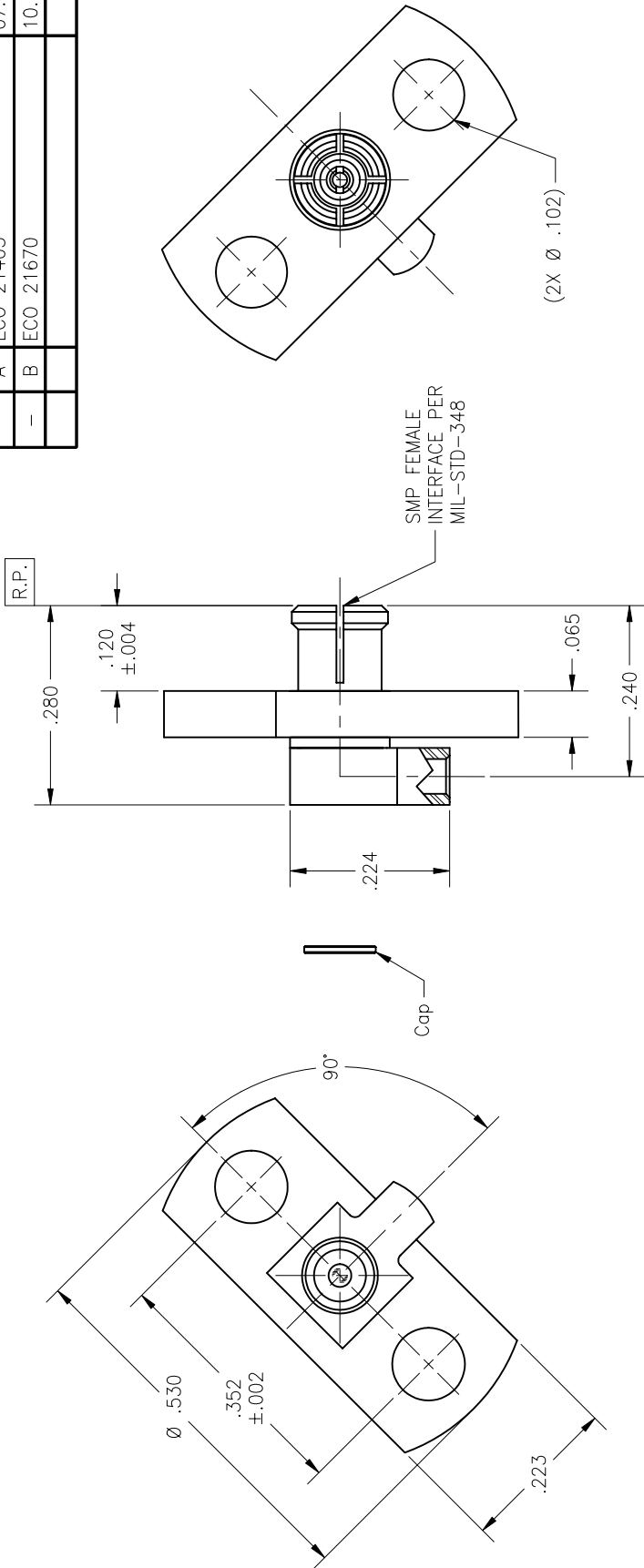


REVISIONS		DATE	BY
ZONE	REV	DESCRIPTION	
-	A	ECO 21405	07.01.08 DKN
-	B	ECO 21670	10.16.08 PCV



NOTE:  
Cap to be packaged and shipped unassembled.

**MATERIAL:**

Body, Center Conductor, Cap & Flange:  
BeCu alloy per ASTM B-196.  
Insulator:  
PTFE per ASTM D-1710.  
Dielectric Stop:  
Ultem 1000 per ASTM D-5205

**ELECTRICAL:**

Impedance: 50 Ohms nominal.  
Frequency Range: DC to 18.0 GHz.  
VSWR:  $1.10 + .005 \times f(\text{GHz})$   
Insertion Loss:  $.03 \times \sqrt{f(\text{GHz})}$   
Working Voltage: 600 Vrms max @ sea level.  
Dielectric Withstanding Voltage: 500 Vrms min.  
R.F. HiPot Voltage: 325 Vrms min @ 5MHz.  
Corona Level: 190 Vrms @ 70,000 ft.  
Insulation Resistance: 5000 MegOhms min.  
Contact Resistance:  
Center Contact: 2.0 Milliohm max.  
R.F. Leakage: -90 dB max.

**MECHANICAL:**

Mating Characteristics:  
Interface per Mil-Std-348.  
Force To Engage & Disengage:  
Depending on Detent  
Center Contact Retention:  
6 pounds min. Axial  
Connector Durability:  
Depending on Detent  
Permeability: Less than 2.0 mu.

**ENVIRONMENTAL:**

Temperature Range: -65°C to +125°C.  
Thermal Shock:  
Mil-Std-202, Method 107, Test Cond. B.  
Moisture Resistance:  
Mil-Std-202, Method 106, except step 7b shall be omitted. Insulation resistance at least 1000 MegOhms within 5 minutes after removal from humidity.  
Corrosion:  
Mil-Std-202, Method 101, Test Cond. B.  
Vibration:  
Mil-Std-202, Method 204, Test Cond. D.  
Shock:  
Mil-Std-202, Method 213, Test Cond. I.

**FINISH:**

Body, Flange, Center Conductor & Cap:  
Gold plate per ASTM B-488, over nickel under plate per AMS-QQ-N-290.

**APPLICABLE CARLISLE IT DOCUMENTS**

WORK STD	PROD INST	ASSY INST
NA	NA	A1670

**TOLERANCES AND NOTES EXCEPT AS NOTED**

- DIMENSIONS ARE IN INCHES.  
LINEAR .XXX ±.005 ANGULAR ± 1/2°  
FRACTION # 1/32
- MACHINE FINISH:  $\sqrt{R}/RMS$
  - BREAK ALL SHARP EDGES .003 MAX.
  - MACHINED FILLETS .005 MAX.
  - MACHINED SURFACES TO BE FINISHED WITH .005 PER INCH.
  - MACHINED DIAMETERS CONCENTRIC WITHIN .005.
  - DIMENSIONS TO BE MET BEFORE PLATING.
  - CHAMFER ALL THREADS 45°.
  - REMOVE ALL BURRS.
  - REMOVE FRAMED EDGES ON TETON.

**APPROVAL INITIALS**

APPROVAL INITIALS	DATE
PCV	01.25.07
PCV	07.07.08

**SIZE**

SIZE	SPECIFICATION	PROCUREMENT
<b>CARLISLE</b>	<b>Interconnect Technologies</b>	
	Long Beach, CA 90815	

**SCALE**

SCALE	TITLE	SHEET	OF
8:1	SMP FEMALE MITER R/A TO	1	1

**REV.**

REV.	DESCRIPTION
C	30990 P753-10636-1CC