

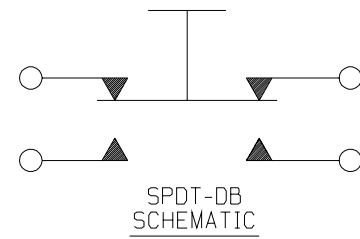
P7-900002

LET	OCN #	DATE	APR
B	935013	04 MAR 94	HR
C	953605	12 SEP 95	RG
D	961003	14 MAR 96	

CHARACTERISTICS

ELECTRICAL:

RATINGS AT 28 VDC				
LOAD	SEA LEVEL		50,000 FT.	
	NO/NC	2 CIRCUIT	NO/NC	2 CIRCUIT
RESISTIVE	5 AMPS.	4 AMPS.	5 AMPS.	4 AMPS.
INDUCTIVE	3 AMPS.	2 AMPS.	3 AMPS.	2 AMPS.
MOTOR	3 AMPS.	_____	_____	_____
LAMP	1 AMP.	_____	_____	_____
DWV	1050 VRMS			



ELECTRICAL LIFE: 50,000 CYCLES

MECHANICAL:

OPERATING FORCE: 1.7±.5 LBS.

TOTAL TRAVEL: .080 MAX.

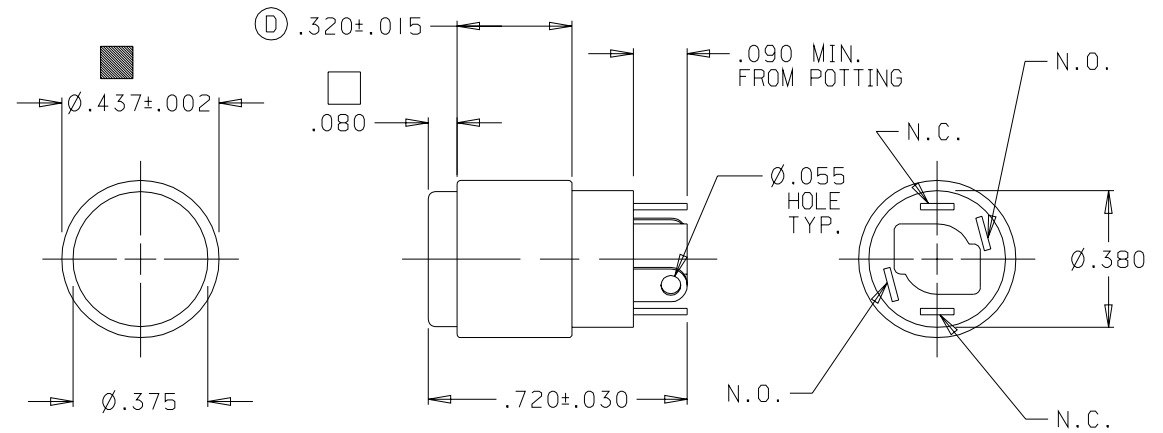
MECHANICAL LIFE: 100,000 CYCLES

PHYSICAL:

ENCLOSURE DESIGN: 2 (MOISTUREPROOF & DUSTTIGHT) PER MIL-S-8805
 TEMPERATURE RANGE: -55°C TO +85°C
 BUTTON: BLACK NYLON
 CASE: BLACK ANODIZED ALUMINUM ALLOY
 BODY: RYTON

MARK: OTTO CONTROLS
 21649, P7-900002
 & DATE CODE

TERM. IDENT.
 N.O.-ROUND ENDED
 N.C.-SQUARE ENDED



MINOR MAJOR CRITICAL SPC CRITICAL

OTTO CONTROLS
 DIVISION OF
 OTTO ENGINEERING INC.
 CARPENTERSVILLE, ILLINOIS USA

PART NAME
 SWITCH,
 MINI-PUSHBUTTON

UNLESS OTHERWISE SPECIFIED:
 DIMENSIONS ARE IN INCHES.
 TOLERANCES ARE AS LISTED.
 MUST BE FREE FROM BURRS
 AND SHARP EDGES.

TOLERANCES
 .XX ±.03
 .XXX ±.010
 ANGLES ±2°
 DO NOT SCALE DRAWING.
 THIRD ANGLE PROJECTION

THIS DOCUMENT IS THE CONFIDENTIAL
 PROPERTY OF OTTO ENGINEERING, INC..
 IT IS PROVIDED ON A RESTRICTED
 BASIS AND IS NOT TO BE USED IN ANY
 WAY DETRIMENTAL TO THE INTERESTS
 OF OTTO ENGINEERING, INC..

DRWN. SH	SIZE	FSCM NO	DRAWING NO.	REV.
CHKD. HR	A	21649	P7-900002	D
APPD. RG	DATE 04 MAR 94	WT.	SCALE 2:1	SHEET 1 OF 1