

# Data Sheet

## P4000

### Hermetically Sealed Pressure Sensor



#### Main Features

Pressure Ranges	0 to 100 up to 0 to 5000 PSI
Electrical Connection	Packard Electric Metri-Pack 150 Series, Deutsch
Pressure Connection	1/8 – 27 NPT, 7/16 – 20 UNF – for more options see how to order section
Housing Material	304 Stainless Steel (1.4301)
Output Signal	0.5 - 4.5 VDC

#### Attributes

- Welded Stainless Steel Construction
- Isolation Diaphragm
- Absolute or Sealed Gage Reference
- Low Power Consumption
- High Vibration Tolerance
- Outstanding EMI/RFI Protection
- Amplified Linear Output
- Temperature Compensated

#### Typical Applications

- On & Off-Highway Vehicle
- Hydraulic Systems
- Pressurized Tools
- Instruments
- Pneumatic Controls
- Refrigerant Control & Recovery

#### Description

The P4000 series of pressure sensors incorporates a stainless steel isolation diaphragm and welded construction to withstand harsh environments. The sensor uses piezo-resistive sensing technology and is paired with our custom ASIC to produce a stable, accurate output. Using a 5 Vdc input, the sensors provide a 0.5 to 4.5 Vdc output proportional to pressure. Internal temperature compensation provides an accurate, easy-to-use device. The rugged construction of the P4000 series is specifically designed to withstand high overpressure spikes and provide compatibility with a wide range of process media including refrigerants and hydraulic oils.

# Technical Specifications

## Pressure Ranges

From 0 to ...*1	PSI (gage)	100	200	300	500	750	1000	1500	2000	3000	4000	5000
Proof pressure	PSI (gage)	300	900	900	150	1500	3000	5000	5000	8000	8000	8000
Burst pressure	PSI (gage)	3750	3750	3750	3750	3750	15000	15000	15000	15000	15000	15000

\*1 for more options see How to Order

## Physical

Operating Life Cycle	min. 1 million full pressure cycles over the full range
Vibration Resistance	MIL-STD 202, Method 204, Condition A (10 G's sinusoidal)
Shock Resistance	75 G's 1/2 sine wave
Drop Test	1m onto concrete surface
Weight	≤ 80 grams (without mating connector)
Ingress Protection	IP67
Media Temperature	-40°C to + 150°C
Environmental Temperature	- 40°C to + 125 °C
Storage Temperature	- 40°C to + 125 °C
Media	All fluids compatible with stainless steel 304 (1.4301)

## Performance

Total error band <sup>2</sup>	+/-2% of span (-40 ≤ T ≤ 125° C)
-------------------------------	----------------------------------

<sup>2</sup>. Including accuracy, calibration, temperature, non-linearity, hysteresis, non-repeatability, error

---

## Electrical

---

Output Signal	0.5...4.5 VDC ratiometric
Operating Supply Signal	5.0 ± 0.5 VDC 10%
Power Consumption	<16 mW
Excitation Current	< 3 mA
Oversvoltage Protection	16 VDC
Short-circuit Proofness	Yes <sup>3</sup>
Reverse Polarity Protection	Yes <sup>4</sup>
Output Load	≥ 25 kΩ
Response Time	≤ 10 ms max. to 63% of full scale pressure with step change on input

3. for min. 3 intervals at 5 minutes each

4. for min. 10 seconds on assigned pins

---

## Approvals & Certificates

---

UL	Standard(s) for Safety: Electrical Equipment for Measurement, Control and Laboratory Use - UL SA10552
----	--

## Dimensions

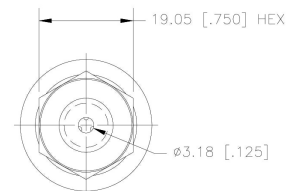
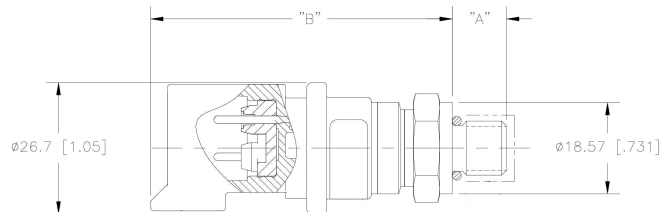
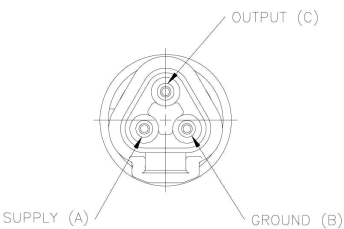
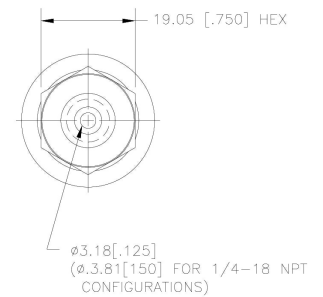
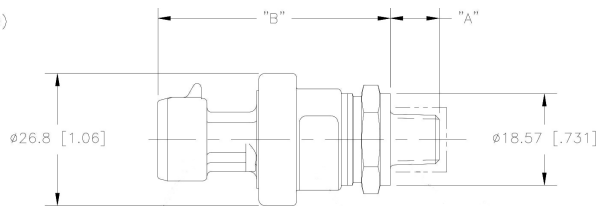
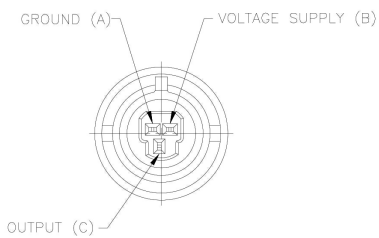
### Pressure Sensor with Electrical Connection

Dimensions in mm [Inch]

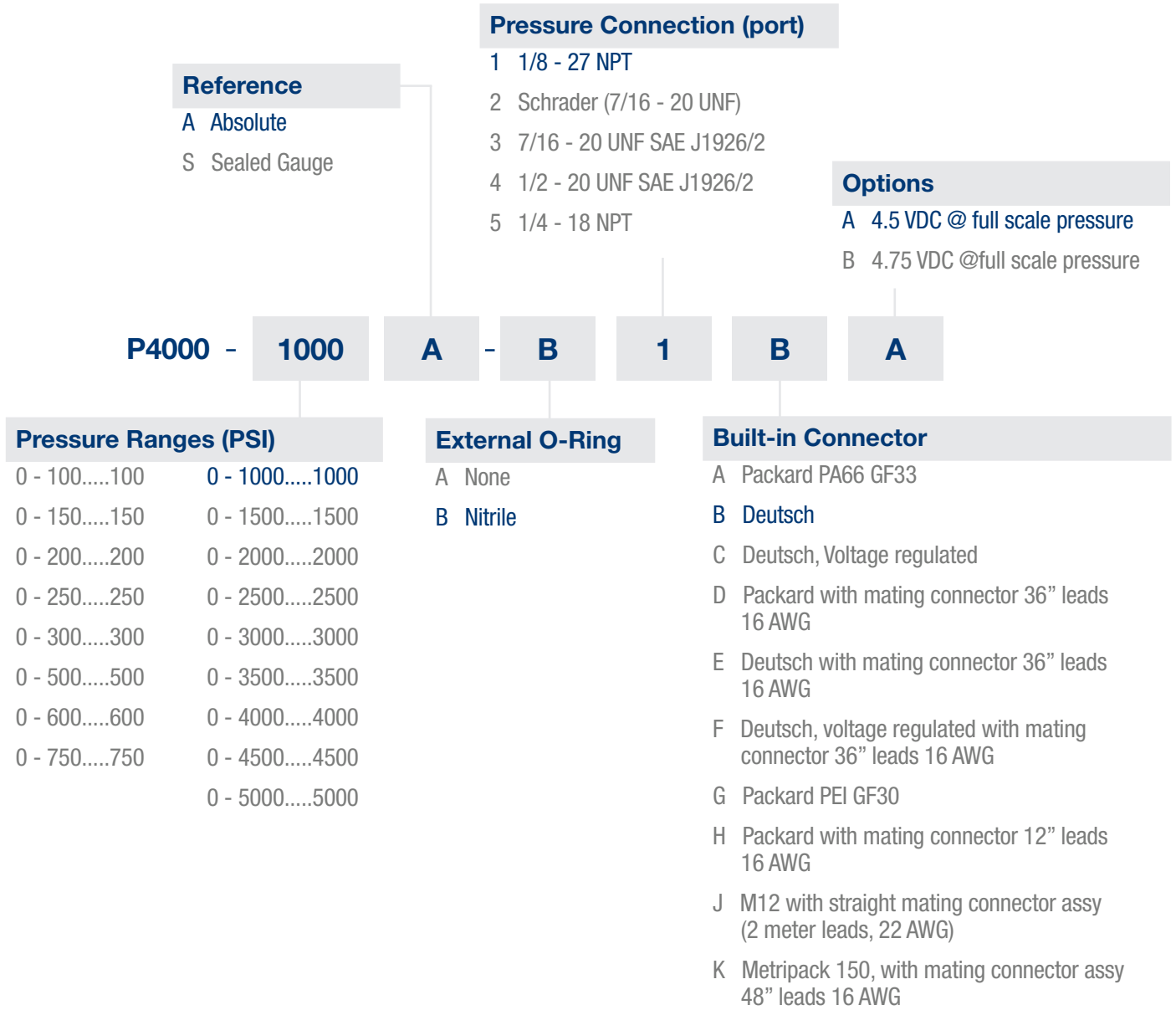
#### Packard (metri-pack 150) Pin Call Outs

Output	Pin 1	Pin 2	Pin 3
0.5-4.5 VDC ratiometric	GND	Vsup	Vout

Thread Size	DIM "A"	DIM "B" (Low Pressure) Connector		DIM "B" (High Pressure) Connector	
		Packard	Deutsch	Packard	Deutsch
1/8 - 27 NPT	9.91 [.39]	48.01 [1.89] MAX	56.39 [2.22] MAX	53.85 [2.12] MAX	61.98 [2.44] MAX
Schrader (7/16 - 20 UNF)	12.45 [.49]	48.01 [1.89] MAX	56.39 [2.22] MAX	-	-
7/16 - 20 UNF SAE J1926/2	11 [.433]	48.01 [1.89] MAX	56.39 [2.22] MAX	53.85 [2.12] MAX	61.98 [2.44] MAX
1/2 - 20 UNF SAE J1926/2	11 [.433]	48.01 [1.89] MAX	56.39 [2.22] MAX	53.85 [2.12] MAX	61.98 [2.44] MAX



# How to Order



**Example:**

P4000-1000-AB1BA

**Description:**

P4000 Pressure Sensor, 0 – 1000 PSI Absolute, Nitrile External O- Ring, 1/8-27 NPT Pressure Connection, with Deutsch Built-in Connector , without further electrical options

Before installation and operation, ensure that the appropriate pressure sensor has been selected in terms of pressure range, design and specific measuring conditions. Non-compliance can result in serious injury and/or damage to the equipment.



**Warning:** The product information contained in this catalogue is given purely as information and does not constitute a representation, warranty or any form of contractual commitment. Kavlico reserve the right to modify their products without notice. It is imperative that we should be consulted over any particular use or application of our products and it is the responsibility of the buyer to establish, particularly through all the appropriate tests, that the product is suitable for the use or application. Under no circumstances will our warranty apply, nor shall we be held responsible for any application (such as any modification, addition, deletion, use in conjunction with other electrical or electronic components, circuits or assemblies, or any other unsuitable material or substance) which has not been expressly agreed by us prior to the sale of our products.

- Manufacturing Facility
- Commercial Office



## Contact Information

### North America

Custom Sensors & Technologies (CST)  
235 E. Main St., Suite 102A  
Northville, MI 48167, USA  
Phone: +1 (248) 465-0815  
Fax: +1 (248) 465-0810  
E-mail: [pressure.sensors@kavlico.com](mailto:pressure.sensors@kavlico.com)

### Europe

Custom Sensors & Technologies (CST)  
Potsdamer Strasse 14  
32423 Minden, Germany  
Phone: +49 571 3859-0  
Fax: +49 571 3859-119  
E-mail: [info@kavlico.de](mailto:info@kavlico.de)

### China

Custom Sensors & Technologies (CST)  
11th Floor, Chang Feng  
International Tower, 89  
Yunling Road (east), Putuo District  
Shanghai - 200062, China  
Phone: +86 (21) 8025 7166  
Fax: +86 (21) 6107 1771  
E-mail: [china@cstsensors.com](mailto:china@cstsensors.com)

### India

Custom Sensors & Technologies (CST)  
Trident Tower, No. 23, 4th Floor, 100 Feet Road  
Ashoka Pillar Road, 2nd Block, Jaydnagar  
Bangalore - 560011, India  
Phone: +91 80 4113-2204/05  
Fax: +91 80 4113-2206  
E-mail: [india@cstsensors.com](mailto:india@cstsensors.com)

### South Korea

Custom Sensors & Technologies (CST)  
14F, Kbiz DMC Tower, 189,  
Seongam-ro, Mapo-gu,  
Seoul, Korea 121-904  
Phone: +82 2 2629-8312  
Fax: +82 2 2629-8310  
E-mail: [korea@cstsensors.com](mailto:korea@cstsensors.com)

### East Asia & Pacific Countries

Custom Sensors & Technologies (CST)  
10/F, Wharf T&T Centre, Harbour City,  
7 Canton Road, Tsim Sha Tsui,  
Kowloon, HONG KONG  
Phone: +852 3960 6473  
Fax: +852 3669 7111  
E-mail: [eap@cstsensors.com](mailto:eap@cstsensors.com)