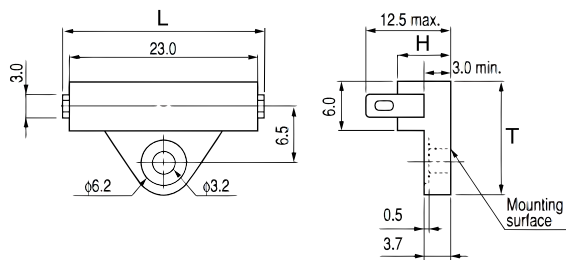


KEMET Part Number: OHD3-35B
(USEO335B000000)

KEMET, OHD, Thermal Reed Switch, Radial Tab, 5C Temperature Accuracy, High Reliability, High-Speed Response, Long Operational Life, Excellent Environmental Durability, High Temperature Accuracy, 35°C, Break



General Information	
Series:	OHD
Type:	Thermal Reed Switch
Style:	Radial Tab
Description:	Thermal Guard
Features:	High Reliability, High-Speed Response, Long Operational Life, Excellent Environmental Durability, High Temperature Accuracy
Lead:	Tab Leads
RoHS:	Yes

Dimensions	
L	27mm MAX
H	6mm
T	13.5mm

Packaging Specifications	
Packaging:	Tray, Box
Packaging Quantity:	1000
Weight:	2.4 g

Specifications	
Switching Temperature:	35C +/-5C
Temperature Range:	-20/+150°C
Contact Type:	Break
Voltage DC:	110 VDC MAX (Opening/Closing), 2500 VAC/1 minute or 3000 VAC/1 second
Voltage AC:	110 VAC MAX (Opening/Closing)
Current:	0.3 Amps AC/DC MAX (Opening/Closing), 0.1 mAmps MIN (1VDC, Opening/Closing)
Resistance:	150 mOhms MAX (Contact Resistance)
Max Opening/Closing Power:	6 W (AC/DC)
Max Opening/Closing Voltage:	110 V (AC/DC)
Differential Temperature:	10C Maximum