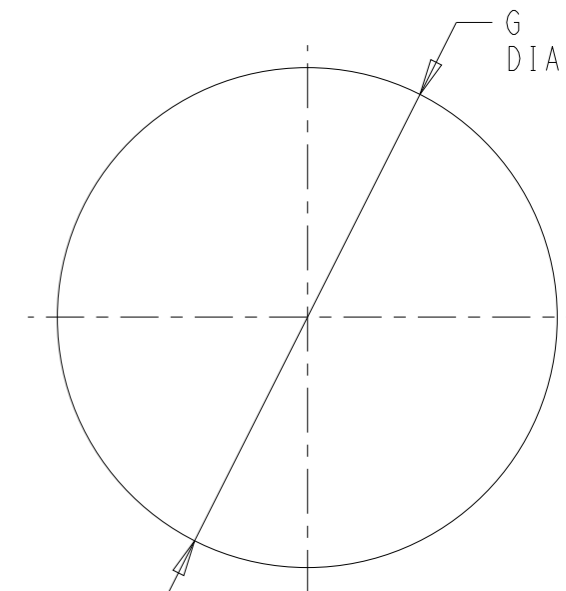
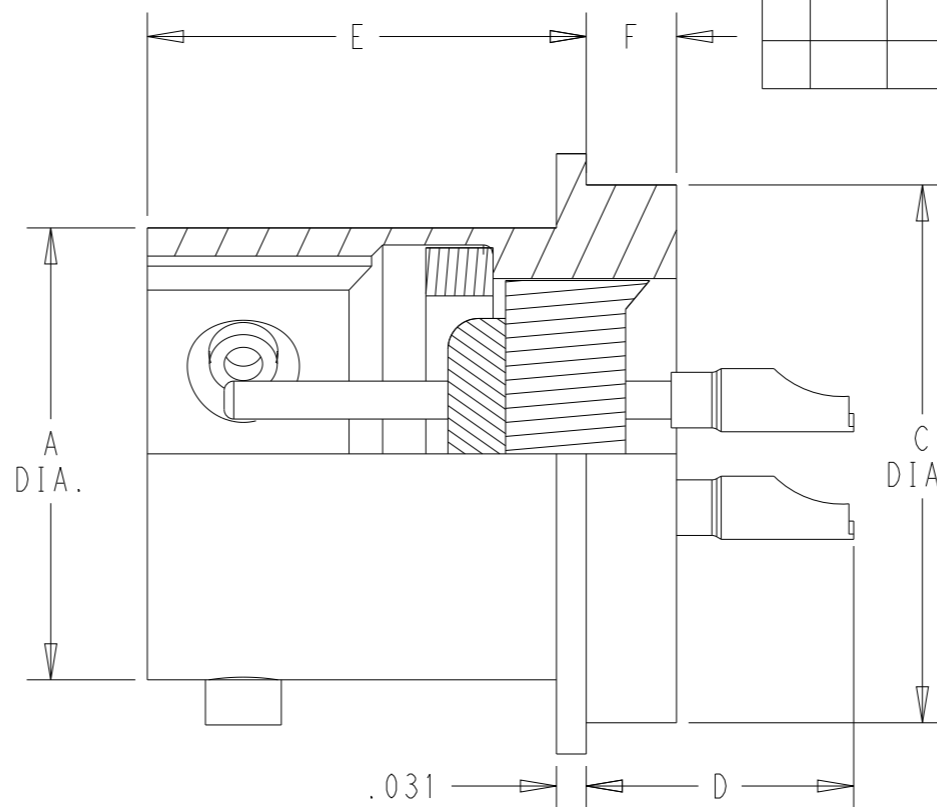
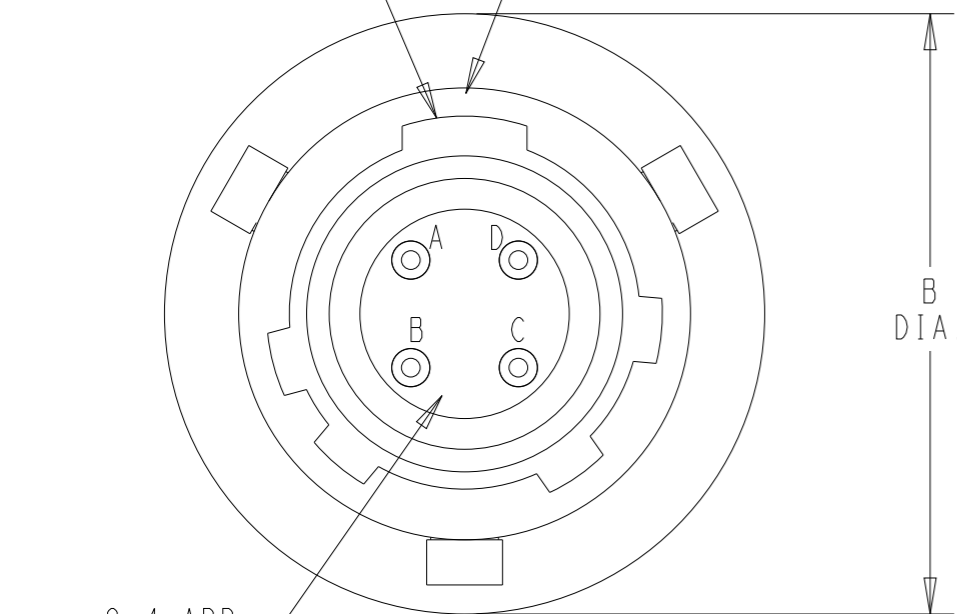


P	LTR	DESCRIPTION	DATE	DWN	APVD
C		REVISDE PER ECN-22-153686	18MAY2022	OG	FA

MAIN POLARIZING KEYWAY INDEX MARK



SHELL SIZE	PART NUMBER	A+.001 -.005	B MAX.	C+.001 -.005	D MAX	E+.020 -.010	F±.010	G+.010 -.000	WT. LBS.
8	22628-8-*P	.473	.635	.562	.386	.447	.094	.572	.016
10	22628-10-*P	.590	.760	.672	.386	.447	.094	.682	.020
12	22628-12-*P	.750	.854	.781	.386	.447	.094	.791	.031
14	22628-14-*P	.875	.979	.906	.386	.447	.094	.916	.039
16	22628-16-*P	1.000	1.104	1.031	.386	.447	.094	1.041	.044
18	22628-18-*P	1.125	1.228	1.156	.386	.447	.094	1.166	.063
20	22628-20-*P	1.250	1.322	1.250	.386	.509	.094	1.260	.083
22	22628-22-*P	1.375	1.448	1.375	.418	.509	.125	1.385	.095
24	22628-24-*P	1.500	1.574	1.500	.418	.542	.125	1.510	.141

MC: 73 FINISH:

DESCRIPTION:
RECEPTACLE, CONNECTOR, ELECTRICAL, HERMETIC, TRI-KAM COUPLING, SOLDER MOUNTING, WITH PIN FACE INSERT

CP CAGE CODE 11139

FOR BEST WORKMANSHIP PRATICES, REFERENCE TE SPEC 101-32119

PART SHALL COMPLY WITH TE WORKMANSHIP 101-32106

1. INSERTS ARE CONTINUOUS DIELECTRIC.
2. CONTACT IDENT. IS IN CONTRASTING COLOR TO INSERTS.
3. FINISH: SHELL & CONTACTS - TIN OVER NICKEL.
4. MATERIAL: GLASS - COMPRESSION
SHELL - MILD STEEL
CONTACTS - NICKEL ALLOY
O-RING - SILICONE
INSERT - ELASTOMER

THIS DRAWING IS A CONTROLLED DOCUMENT.

DWN 18MAY2022 OSCAR GONZALEZ
CHK 18MAY2022 FRANCISCO APODACA
APVD 18MAY2022 FRANCISCO APODACA

NAME RECEPTACLE, CONNECTOR SOLDER MOUNT

PRODUCT SPEC -
APPLICATION SPEC -
WEIGHT -

SIZE A3 CAGE CODE 00779 DRAWING NO. C=22628-x-xP RESTRICTED TO -

CUSTOMER DRAWING SCALE 4:1 SHEET 1 OF 1 REV C

TE Connectivity

DIMENSIONS:	TOLERANCES UNLESS OTHERWISE SPECIFIED:
in	
	0 PLC ±-
	1 PLC ±.1
	2 PLC ±.02
	3 PLC ±.005
	4 PLC ±.0005
	ANGLES ±-
MATERIAL 304L REF.	FINISH