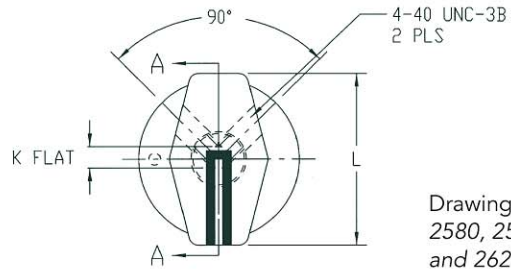
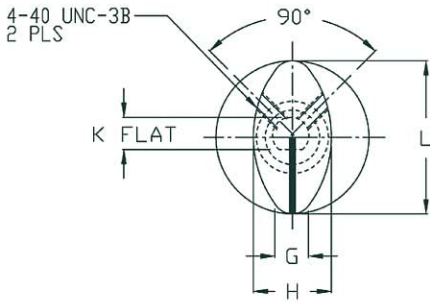
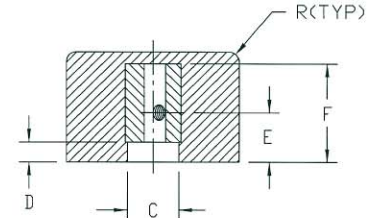
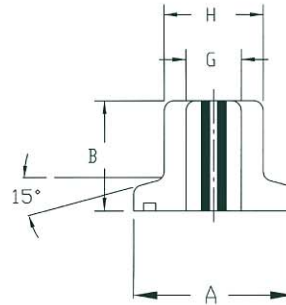
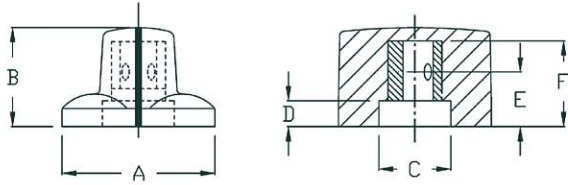


TRANSILLUMINATED PR SERIES



Drawings for style numbers
2580, 2590, 2600, 2610,
and 2620.



Drawings directly above are for
style number 571 only.



571



2580



2590



2600



2610



2620

PR SERIES

Style Number	A Base Diameter	B Height	C Nut Clearance Diameter		D Nut Clearance Depth	E	F Shaft Screw Height	G Hole Depth	H	L	Set Screws	
			1/8	1/4							1/8	1/4
571	1.06	0.69	0.50	0.50	0.18	0.38	0.58	0.15	0.53	1.06	MS51021-101	MS51021-101
2580	0.81	0.56	0.26	-	0.10	0.25	0.50	0.28	0.50	0.88	MS51021-102	-
2590	0.94	0.62	0.26	0.39	0.16	0.31	0.53	0.28	0.56	1.00	MS51021-102	MS51021-131
2600	1.06	0.69	0.26	0.39	0.16	0.31	0.59	0.32	0.62	1.12	MS51021-103	MS51021-132
2610	1.12	0.78	-	0.39	0.16	0.31	0.68	0.36	0.69	1.25	-	MS51021-132
2620	1.38	0.88	-	0.39	0.16	0.31	0.78	0.38	0.75	1.50	-	MS51021-133

Design Variations

- Set screw locations can vary
- Markings and color can vary (see page 79)
- Nut clearance depth and diameter can vary
- See part number system for shaft hole designation

Detailed drawings are available for each style

All of our backlighted knobs can be manufactured for night vision use. Our night vision knobs meet NVIS "Green A" requirements.

