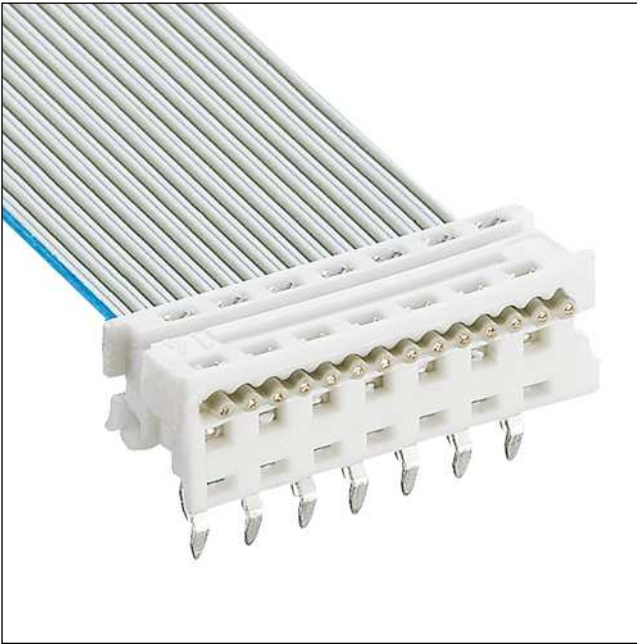


30 MICAL

Micromodul™ connectors, pitch 1.27 mm



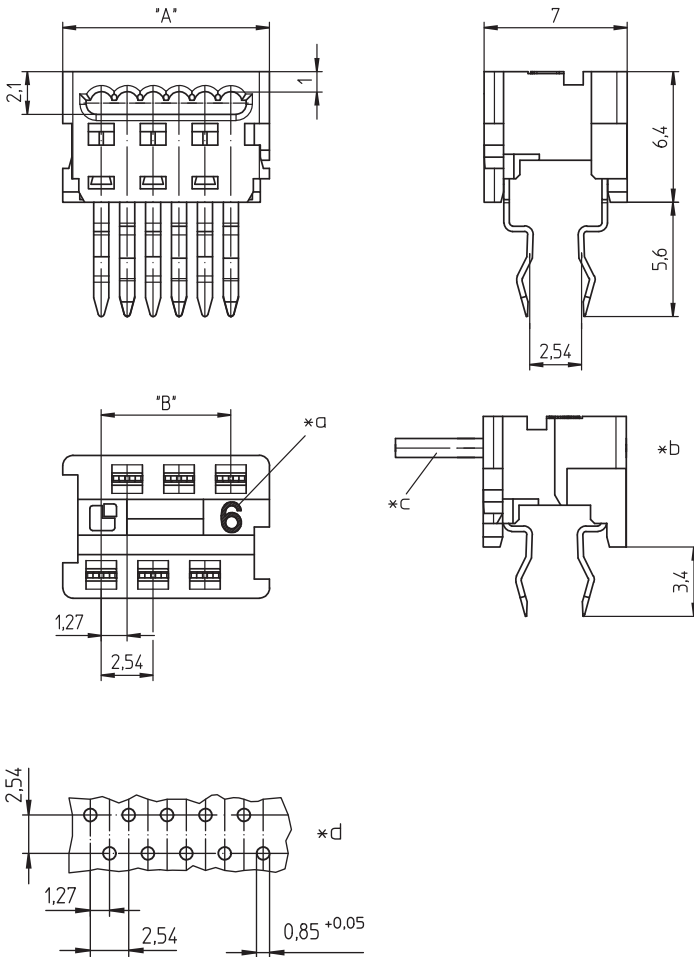
Micromodul™ solder-in connector, insulation displacement technology (IDT), solder contacts dual row staggered

---

Approvals:



**30 MICAL**



- \*a marking: number of poles
- \*b terminated connector
- \*c flat cable
- \*d printed circuit board layout, solder side view

**Environmental conditions**

Temperature range -40 °C/+120 °C<sup>1</sup>  
<sup>1</sup> upper limit temperature (insulating body) RTI (electrical) of the UL Yellow Card

**Materials**

Insulating body PBT, V-0 according to UL94  
 Contact spring CuSn, tin-plated

**Connectable conductors for IDT area**

Construction flat cable 1.27 mm LiYV  
 Section min. AWG 28 (0.09 mm<sup>2</sup>)  
 Section max. AWG 26 (0.14 mm<sup>2</sup>)  
 Insulation diameter 1.0 mm  
 Approved cables at [www.lumberg.com](http://www.lumberg.com)

**Electrical data (at T<sub>amb</sub> 20 °C)**

Contact resistance ≤ 10 mΩ  
 Rated current 1.2 A  
 Rated voltage 32 V AC  
 (250 V AC not considering clearances and creepage distances of IEC 60664/DIN EN 60664)  
 Material group IIIa (IEC)/3 (UL) (CTI ≥ 175)  
 Creepage distance 0.54 mm  
 Clearance 0.54 mm  
 Insulation resistance > 1 GΩ

**Associated products**

Harnessing equipment  
 ☞ HZ-M30 ☞ KHP30 ☞ PP30  
 ☞ VARICON 1000 ☞ VARICON 1000-Eco

30 MICAL

| Designation | Pole Number | PU (Pieces) | MDQ (Pieces) | Dimensions |        |
|-------------|-------------|-------------|--------------|------------|--------|
|             |             |             |              | A (mm)     | B (mm) |
| MICAL 04    | 4           | 250         | 1000         | 7.59       | 3.81   |
| MICAL 06    | 6           | 250         | 1000         | 10.13      | 6.35   |
| MICAL 08    | 8           | 250         | 1000         | 12.67      | 8.89   |
| MICAL 10    | 10          | 250         | 1000         | 15.21      | 11.43  |
| MICAL 12    | 12          | 250         | 1000         | 17.75      | 13.97  |
| MICAL 14    | 14          | 250         | 1000         | 20.29      | 16.51  |
| MICAL 16    | 16          | 250         | 500          | 22.83      | 19.05  |
| MICAL 18    | 18          | 250         | 500          | 25.37      | 21.59  |
| MICAL 20    | 20          | 250         | 500          | 27.91      | 24.13  |
| MICAL 26    | 26          | 250         | 500          | 35.53      | 31.75  |

**Packaging:**

in bulk, in a cardboard box – in bar stock carriers upon request