

MCRK-8-S



CC393-2830-L-S

MCRK, CC393 SERIES

# 8 SERIES IP67 FIELD TERMINATION KIT

Mates with:  
MCP(K)

## SPECIFICATIONS

For complete specifications see [www.samtec.com?MCRK](http://www.samtec.com?MCRK)

**Insulator Material:**  
PPS

**Contact Material:**  
Phosphor Bronze

**Operating Temp Range:**  
-20 °C to +80 °C

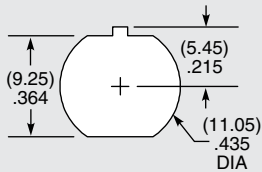
**Gasket Material:**  
Neoprene Rubber

**Lock Washer:**  
Phosphor Bronze, Ni plated

**Hex Nut:**  
Brass, Ni plated

**RoHS Compliant:**  
Yes

## PANEL OPENING

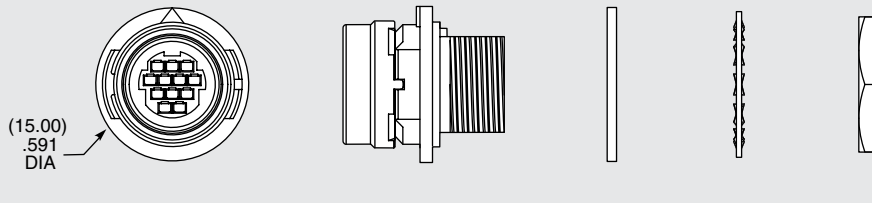


**Note:** Samtec's MCRK Series is dual sourced by Hirose Electric Co., LTD.



## DUST CAPS

- DCA-MCR-8
- Visit [sealedio.samtec.com](http://sealedio.samtec.com) for a complete list of sealed systems



## SPECIFICATIONS

For complete specifications see [www.samtec.com?CC393](http://www.samtec.com?CC393)

**Plating:**  
10 μm (0.25 μm) Gold on contact

## TOOLING

- Hand tool:  
CAT-HT-393-2430-13
- Mini Applicator  
(28-30 AWG):  
CAT-MC-393-2830-XX-01
- Extraction Tool:  
CAT-EX-MCX-8-01



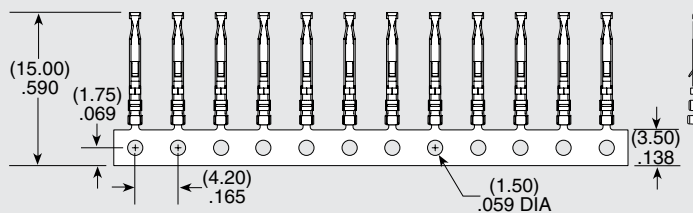
**CC393**  
= Contact

**-2830**  
= 28 to 30 AWG

**-S**  
= Strip  
(15 contacts)

**-M**  
= Mini Reel  
(1,000 - 5,000 contacts)

**-R**  
= Reel  
(20,000 contacts)



Due to technical progress, all designs, specifications and components are subject to change without notice.

[WWW.SAMTEC.COM](http://WWW.SAMTEC.COM)

All parts within this catalog are built to Samtec's specifications.  
Customer specific requirements must be approved by Samtec and identified in a Samtec customer-specific drawing to apply.