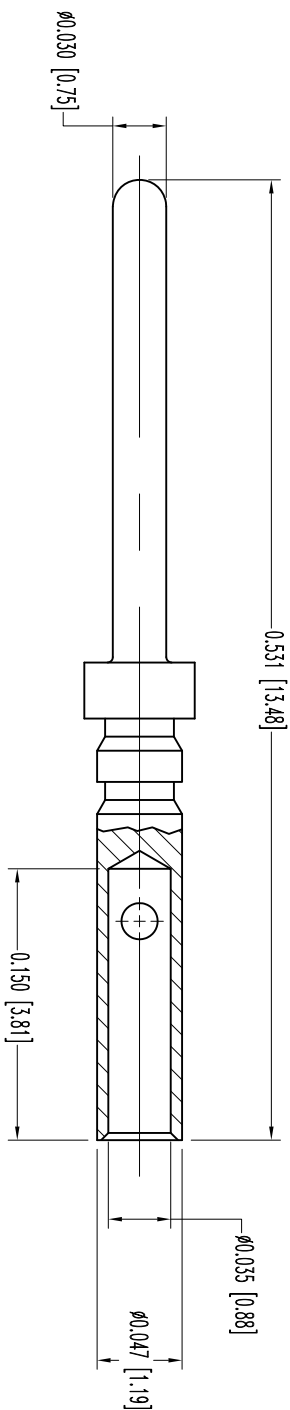


THIS DRAWING CONTAINS INFORMATION PROPRIETARY TO POSITRONIC AND ITS SUBSIDIARIES. POSITRONIC BELIEVES THE DATA ON THIS DRAWING TO BE RELIABLE, SINCE THE USER HAS NOT CONDUCTED AN INDEPENDENT VERIFICATION OF THE INFORMATION AND HAS NOT CONDUCTED AN INDEPENDENT VERIFICATION OF THE INFORMATION. POSITRONIC ASSUMES NO RESPONSIBILITY FOR RESULTS OBTAINED OR DAMAGES INCURRED FROM USE OF SUCH INFORMATION IN WHOLE OR IN PART.



- NOTES:
1. MATERIAL: COPPER ALLOY, GOLD FLASH OVER NICKEL.
 2. DETAILED PRODUCT, MECHANICAL, AND ELECTRICAL INFORMATION IS AVAILABLE IN THE LATEST HIGH DENSITY D-SUB PRODUCT PUBLICATION. VISIT CONNECTPOSITRONIC.COM/PRODUCTS/59/HIGHDENSITYD-SUBMINIATURE OR CONNECTPOSITRONIC.COM.
 3. CONTACTS ARE ROHS COMPLIANT PER ROHS DIRECTIVE 2002/95/EC OF 27 JAN 2003.
 4. DIMENSIONS ARE IN INCHES [MILLIMETERS].

DATE	REV	REVISION RECORD	APP	DR	CK
4-13-06	NC	ECO 25832	RCM	YK	COM
11-2	A	ECO 34678	COM	TL	COM
11					

SK7268



POSITRONIC INDUSTRIES INC.
www.connectpositronic.com

FSCM 28198



DECIMAL TOL. ± 0.015 [0.38]
ANGULAR TOL. ± 5°

DATE	4-13-06	DRAWING NUMBER	SK7268	REV.	A
TITLE	M08122D/AA				
ODD SERIES	N.T.S.				
SCALE	DRAWN BY YK				
APPROVED BY	R. WILLIAMS				