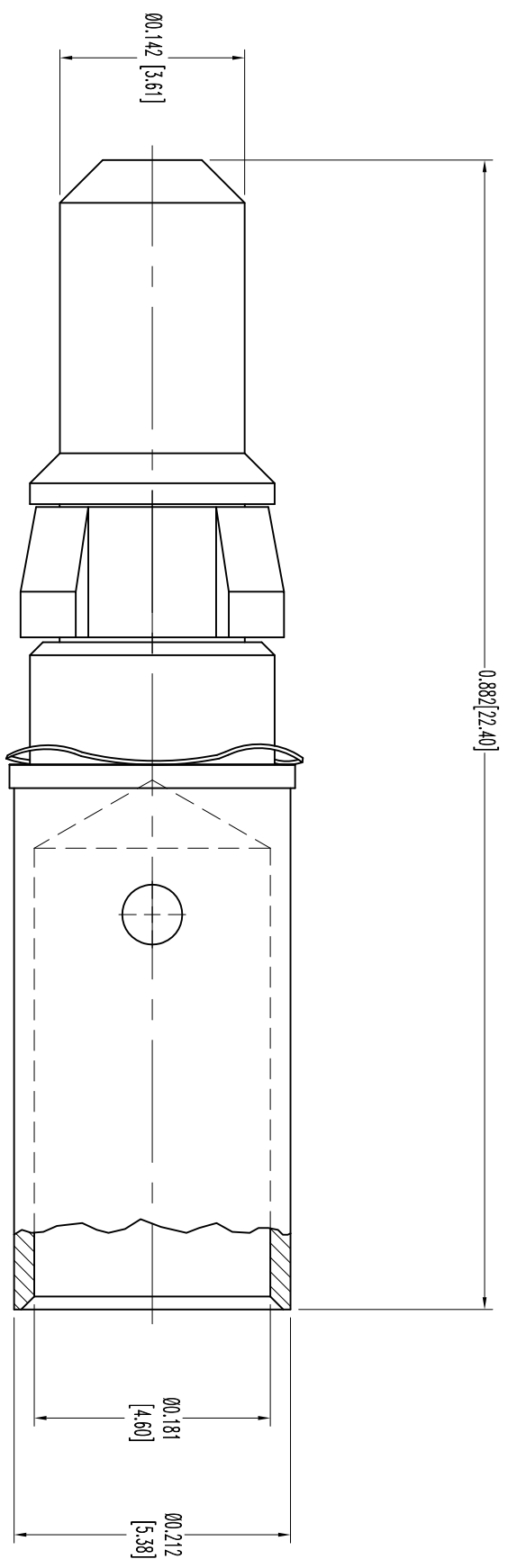


THIS DRAWING CONTAINS INFORMATION PROPRIETARY TO POSITRONIC INDUSTRIES INC. THE DATA ON THIS DRAWING TO BE RELIABLE SINCE THE USER EMPLOY'S SUCH INFORMATION AT HIS OWN DISCRETION. RESULTS OBTAINED OR DAMAGES INCURRED FROM USE OF SUCH INFORMATION IN WHOLE OR IN PART.



NOTES:
 1. MATERIAL AND FINISHES:
 CONTACT: PRECISION MACHINED COPPER ALLOY, GOLD FLASH OVER NICKEL PLATE.
 WAVE WASHER: BERYLLIUM COPPER, GOLD FLASH OVER NICKEL PLATE.
 RETENTION RING: BERYLLIUM COPPER, NICKEL PLATE.

2. DETAILED PRODUCT, ELECTRICAL, AND MECHANICAL INFORMATION IS AVAILABLE IN THE LATEST STANDARD DENSITY COMBO-D PRODUCT PUBLICATION.

VISIT CONNECTPOSITRONIC.COM/PRODUCTS/1/STANDARDENSITYCOMBO-D OR CONNECTPOSITRONIC.COM.

3. CONTACTS ARE ROHS COMPLIANT PER ROHS DIRECTIVE 2002/95/EC OF 27 JAN 2003.
 4. DIMENSIONS ARE IN INCHES [MILLIMETERS].

DATE	REV	REVISION RECORD	APP	DR	CK
2-10-06	NC	ECO 25488	RW	YK	COLM
3-28-10	A	ECO 32294	COLM	BE	SY
11-9	B	ECO 34713	COLM	BE	COLM

SK7040



POSITRONIC INDUSTRIES INC.
www.connectpositronic.com

FSC# 28198

DECIMAL TOL. ± 0.015 [0.38]	ANGULAR TOL. ± 5°	CBD SERIES	SCALE N.T.S.	DRAWN BY YK	DATE 2-10-06	DRAWING NUMBER SK7040	REV. B
TITLE MC4008D/AA		APPROVED BY RW					