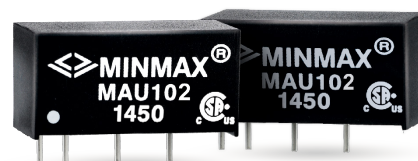


**FEATURES**

- ▶ Industrial Standard SIP-7 Package
- ▶ Unregulated Output Voltage
- ▶ I/O Isolation 1000 VDC
- ▶ Operating Ambient Temp. Range -40°C to +85°C
- ▶ UL/cUL/IEC/EN 60950-1 Safety Approval


**PRODUCT OVERVIEW**

The MINMAX MAU100 series is a range of 1W DC-DC converters in a small SIP Package featuring I/O isolation of 1000VDC.

An excellent efficiency allows an operating temperature range of -40°C to +85°C. These converters offer an economical solution for many applications where a voltage has to be isolated i.e for noise reduction, ground loop elimination, digital interfaces or for board level power distribution.

**Model Selection Guide**

Model Number	Input Voltage (Range) VDC	Output Voltage VDC	Output Current		Input Current		Load Regulation % (max.)	Max. capacitive Load µF	Efficiency (typ.) %
			Max.	Min.	@Max. Load	@No Load			
			mA	mA	mA(typ.)	mA(typ.)			@Max. Load
MAU101	5 (4.5 ~ 5.5)	3.3	260	5	235	30	10	220	73
MAU102		5	200	4	281		10		71
MAU103		9	110	2	260		8		76
MAU104		12	84	1.5	258		7	78	
MAU105		15	67	1	258		7	78	
MAU106		±5	±100	±2	278		10	100#	72
MAU107		±9	±56	±1	262		8		77
MAU108		±12	±42	±0.8	258		7		78
MAU109		±15	±34	±0.7	258		7	79	
MAU111	12 (10.8 ~ 13.2)	3.3	260	5	96	12	8	220	74
MAU112		5	200	4	114		8		73
MAU113		9	110	2	106		5		78
MAU114		12	84	1.5	105		5	80	
MAU115		15	67	1	104		5	80	
MAU116		±5	±100	±2	113		8	100#	74
MAU117		±9	±56	±1	106		5		79
MAU118		±12	±42	±0.8	104		5		81
MAU119		±15	±34	±0.7	105		5	81	
MAU151	15 (13.5 ~ 16.5)	5	200	4	93	11	8	220	72
MAU152		12	84	1.5	85		5		79
MAU153		15	67	1	85		5		79
MAU154		±5	±100	±2	93		8	100#	72
MAU155		±12	±42	±0.8	85		5		80
MAU156		±15	±34	±0.7	85		5		80
MAU121	24 (21.6 ~ 26.4)	3.3	260	5	49	7	8	220	73
MAU122		5	200	4	59		8		71
MAU123		9	110	2	54		5		76
MAU124		12	84	1.5	54		5	78	
MAU125		15	67	1	53		5	79	
MAU126		±5	±100	±2	58		8	100#	72
MAU127		±9	±56	±1	55		5		76
MAU128		±12	±42	±0.8	53		5		79
MAU129		±15	±34	±0.7	53		5	80	

\* Min. Output Current for Lower Load Regulation

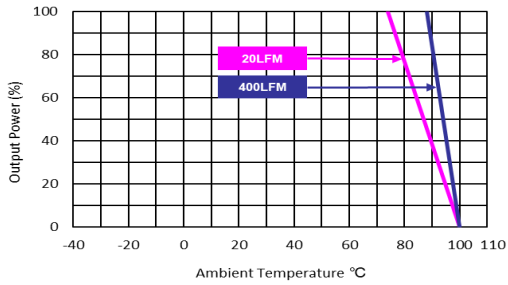
# For each output

Input Specifications					
Parameter	Model	Min.	Typ.	Max.	Unit
Input Voltage Range	5V Input Models	4.5	5	5.5	VDC
	12V Input Models	10.8	12	13.2	
	15V Input Models	13.5	15	16.5	
	24V Input Models	21.6	24	26.4	
Input Surge Voltage (1 sec. max.)	5V Input Models	-0.7	---	9	
	12V Input Models	-0.7	---	18	
	15V Input Models	-0.7	---	18	
	24V Input Models	-0.7	---	30	
Input Filter	All Models	Internal Capacitor			

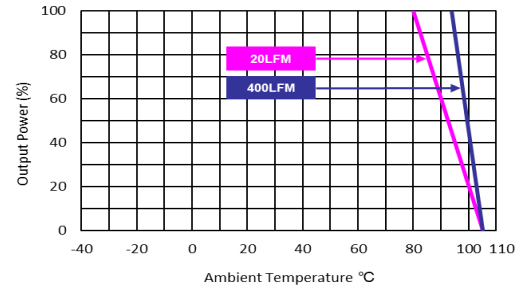
Output Specifications					
Parameter	Conditions	Min.	Typ.	Max.	Unit
Output Voltage Setting Accuracy		---	±1.0	±3.0	%Vnom.
Output Voltage Balance	Dual Output, Balanced Loads	---	±0.1	±1.0	%
Line Regulation	For Vin Change of 1%	---	±1.2	±1.5	%
Load Regulation	Io=20% to 100%	See Model Selection Guide			
Ripple & Noise	0-20 MHz Bandwidth	---	50	75	mV <sub>P-P</sub>
Temperature Coefficient		---	±0.01	±0.02	%/°C
Short Circuit Protection	0.5 Second Max., Automatic Recovery				

General Specifications					
Parameter	Conditions	Min.	Typ.	Max.	Unit
I/O Isolation Voltage	60 Seconds	1000	---	---	VDC
	1 second	1200	---	---	VDC
I/O Isolation Resistance	500 VDC	1000	---	---	MΩ
I/O Isolation Capacitance	100kHz, 1V	---	60	100	pF
Switching Frequency		70	100	120	kHz
MTBF (calculated)	MIL-HDBK-217F@25°C, Ground Benign	2,000,000			Hours
Safety Approvals	UL/cUL 60950-1 recognition (CSA certificate), IEC/EN 60950-1(CB-report)				

Environmental Specifications			
Parameter	Min.	Max.	Unit
Operating Ambient Temperature Range Nominal Vin, Load 100% Inom. (for Power Derating see relative Derating Curves)	-40	+85	°C
Case Temperature	---	+105	°C
Storage Temperature Range	-50	+125	°C
Humidity (non condensing)	---	95	% rel. H
Lead Temperature (1.5mm from case for 10Sec.)	---	260	°C

**Power Derating Curve**


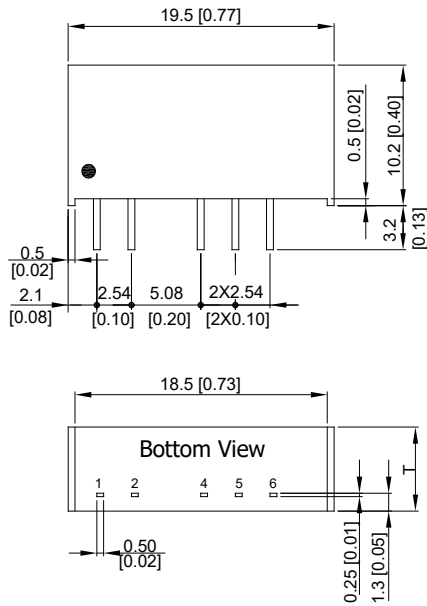
3.3Vo, 5Vo, ±5Vo Output Models



9Vo, 12Vo, 15Vo, ±9Vo, ±12Vo, ±15Vo Output Models

**Notes**

- 1 Specifications typical at  $T_a=+25^{\circ}\text{C}$ , resistive load, nominal input voltage and rated output current unless otherwise noted.
- 2 These power converters require a minimum output loading to maintain specified regulation, operation under no-load conditions will not damage these modules; however they may not meet all specifications listed.
- 3 We recommend to protect the converter by a slow blow fuse in the input supply line.
- 4 Other input and output voltage may be available, please contact MINMAX.
- 5 Specifications are subject to change without notice.
- 6 The repeated high voltage isolation testing of the converter can degrade isolation capability, to a lesser or greater degree depending on materials, construction, environment and and reflow solder process. Any material is susceptible to eventual chemical degradation when subject to very high applied voltages thus implying that the number of tests should be strictly limited. We therefore strongly advise against repeated high voltage isolation testing, but if it is absolutely required, that the voltage be reduced by 20% from specified test voltage. Furthermore, the high voltage isolation capability after reflow solder process should be evaluated as it is applied on system.

**Package Specifications**
**Mechanical Dimensions**

**Pin Connections**

Pin	Single Output	Dual Output
1	+Vin	+Vin
2	-Vin	-Vin
4	-Vout	-Vout
5	No Pin	Common
6	+Vout	+Vout

T: 6.1mm(0.24 inch) for 5V&amp;12V Input Models

T: 7.1mm(0.28 inch) for 15V&amp;24V Input Models

- ▶ All dimensions in mm (inches)
- ▶ Tolerance: X.X±0.25 (X.XX±0.01)  
X.XX±0.13 (X.XXX±0.005)
- ▶ Pins ±0.05 (±0.002)

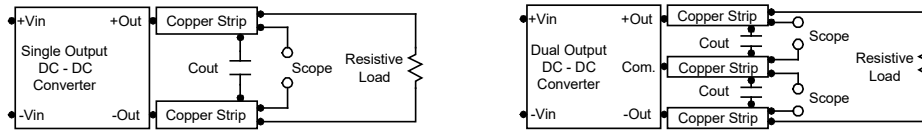
**Physical Characteristics**

Case Size (5V&12V Input)	: 19.5x6.1x10.2mm (0.77x0.24x0.40 inches)
Case Size (15V&24V Input)	: 19.5x7.1x10.2mm (0.77x0.28x0.40 inches)
Case Material	: Non-Conductive Black Plastic (flammability to UL 94V-0 rated)
Pin Material	: Alloy 42
Weight (5V&12V Input)	: 2.2g
Weight (15V&24V Input)	: 2.6g

### Test Setup

#### Peak-to-Peak Output Noise Measurement Test

Use a  $C_{out}$  0.33 $\mu$ F ceramic capacitor. Scope measurement should be made by using a BNC socket, measurement bandwidth is 0-20 MHz. Position the load between 50 mm and 75 mm from the DC-DC Converter.



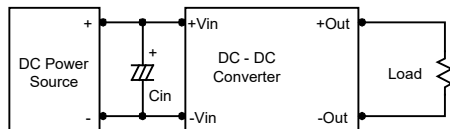
### Technical Notes

#### Maximum Capacitive Load

The MAU100 series has limitation of maximum connected capacitance at the output. The power module may be operated in current limiting mode during start-up, affecting the ramp-up and the startup time. For optimum performance we recommend 100 $\mu$ F maximum capacitive load for dual outputs and 220 $\mu$ F capacitive load for single outputs. The maximum capacitance can be found in the data sheet.

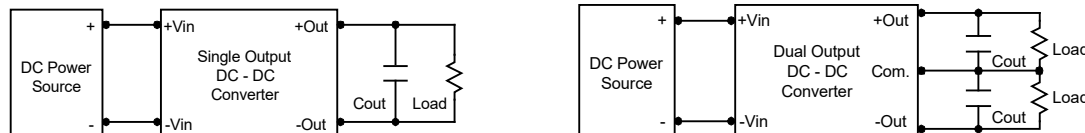
#### Input Source Impedance

The power module should be connected to a low ac-impedance input source. Highly inductive source impedances can affect the stability of the power module. In applications where power is supplied over long lines and output loading is high, it may be necessary to use a capacitor at the input to ensure startup. Capacitor mounted close to the power module helps ensure stability of the unit, it is commended to use a good quality low Equivalent Series Resistance (ESR < 1.0 $\Omega$  at 100 kHz) capacitor of a 2.2 $\mu$ F for the 5V input devices, a 1.0 $\mu$ F for the 12V,15V input devices and a 0.47 $\mu$ F for the 24V devices.



#### Output Ripple Reduction

A good quality low ESR capacitor placed as close as practicable across the load will give the best ripple and noise performance. To reduce output ripple, it is recommended to use 1.0 $\mu$ F capacitors at the output.



#### Thermal Considerations

Many conditions affect the thermal performance of the power module, such as orientation, airflow over the module and board spacing. To avoid exceeding the maximum temperature rating of the components inside the power module, the case temperature must be kept below 105°C. The derating curves are determined from measurements obtained in a test setup.

