

 OEM AUTOMATIC

Panasonic

Motors

A long term partner to improve your competitive advantage

OEM Automatic markets components for industrial automation. For more than 30 years it has collaborated with market leading manufacturers from all over the world and performs the sales and marketing function for the countries where we operate. We offer a product range which is one of the widest and deepest on the market. The products are continually being developed and refined in order to offer just what the customer needs.

Supported by an efficient organisation we can offer our customers quick and effective service. We can help to select the best products for each application and by reducing the number of suppliers lower the total cost of purchasing. OEM Automatic aims to build long lasting relationships with both our customers and suppliers.

A valuable link between manufacturers and customers

OEM Automatic Ltd acts as the manufacturers sales and marketing organisation for the UK market. Through our market presence, customer focus and high level of service we add real value to the supply chain. By working closely with the manufacturer and the customer we can provide the most cost-effective solution.

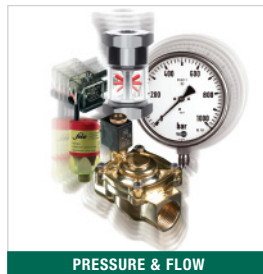
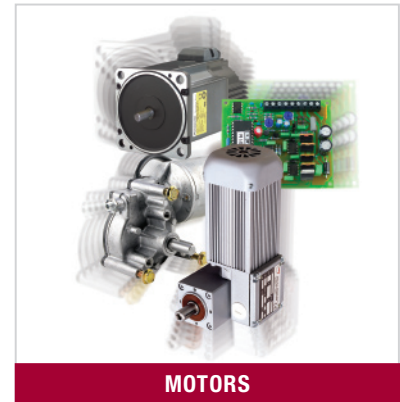
Close to the customer for best service

Our UK head office and warehouse is located centrally, close to Leicester, which provides excellent communication links with the rest of the country. Our team of travelling sales engineers are also located there so are never far away if a personal visit is required.



There are other OEM Automatic companies in Sweden, Finland, Norway, Denmark, Poland, Czech Republic, Slovakia and Estonia. Together we are a leading company in the field of industrial automation components for northern Europe.

To offer the best service and support we are organised into four specialised business areas, based on products and markets.



Telephone	0116 2849900
FAX	0116 2841721
Email	information@uk.oem.se
Web	www.oem.co.uk

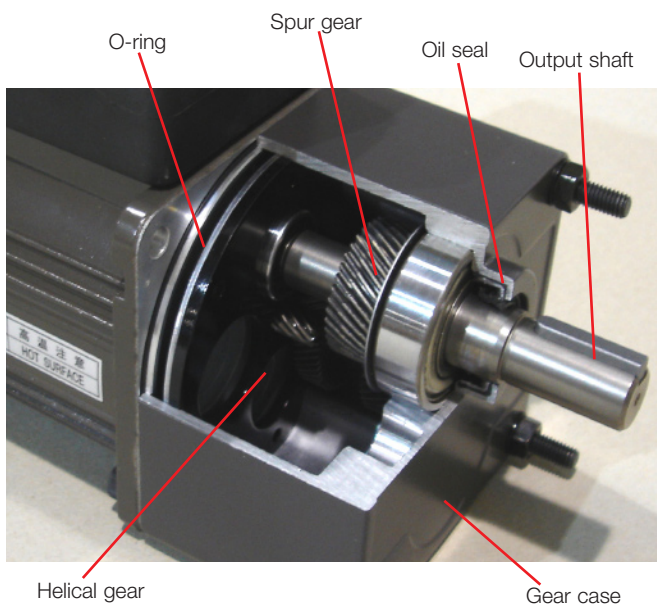


Page Index

Part numbers & ordering references	2
AC induction motors & spur gears	3-8
High torque gearboxes	9
Wiring instructions	10
Geared motor accessories	11-12
Brushless motors & accessories	13-19
OEM motors overview	20
General conditions of sale	21

Panasonic 3-Series Geared Motors

Panasonic, one of the largest motor manufacturers in the world, have designed and developed a new range of globally approved geared motors. Covering powers from 6 to 90W these units replace the established G-Series range with improved efficiency and longer life, continuing the reputation for quality, value and reliability.



Features:

- All ball bearing gearboxes as standard, rated to 10,000 hrs lifetime
- Globally approved CE/ UL/ cUL/ CCC
- Speed range from 1375r/min down to 0.7r/min
- Fixed speed and variable speed models available
- IP 65 available on request
- RoHS compliant
- Proven quality and reliability

Range Overview of the 3-Series

1 Phase

Geared motors suitable for running at fixed or variable speed in a power range of 6 to 90W.

Quick Reversing

Single phase geared motors with a built in constant friction brake that reduces overrun.

3 Phase

Geared motors ranging from 25-90W. The 230V versions suit variable speed running with an inverter. The 400V versions are designed to be connected directly to 3 phase supplies.

Brake Motor

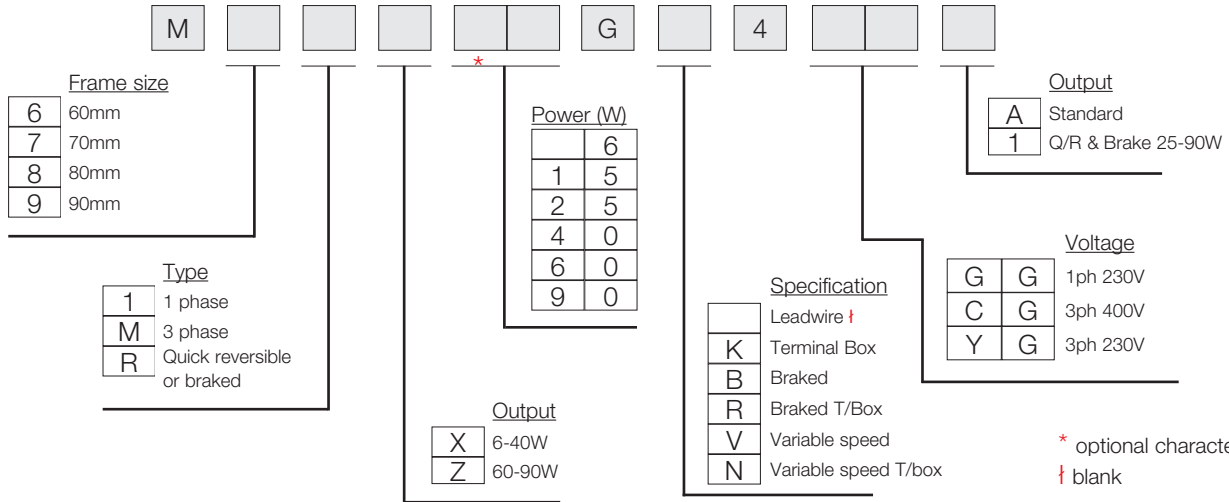
Geared motors with an integrated electro magnetic spring applied brake for 1 or 3 phase 230V supply.

WARNING!

Please note that the new 3-Series gearboxes are not interchangeable with old G-Series motors and likewise G-Series gearboxes are not interchangeable with 3-Series motors.

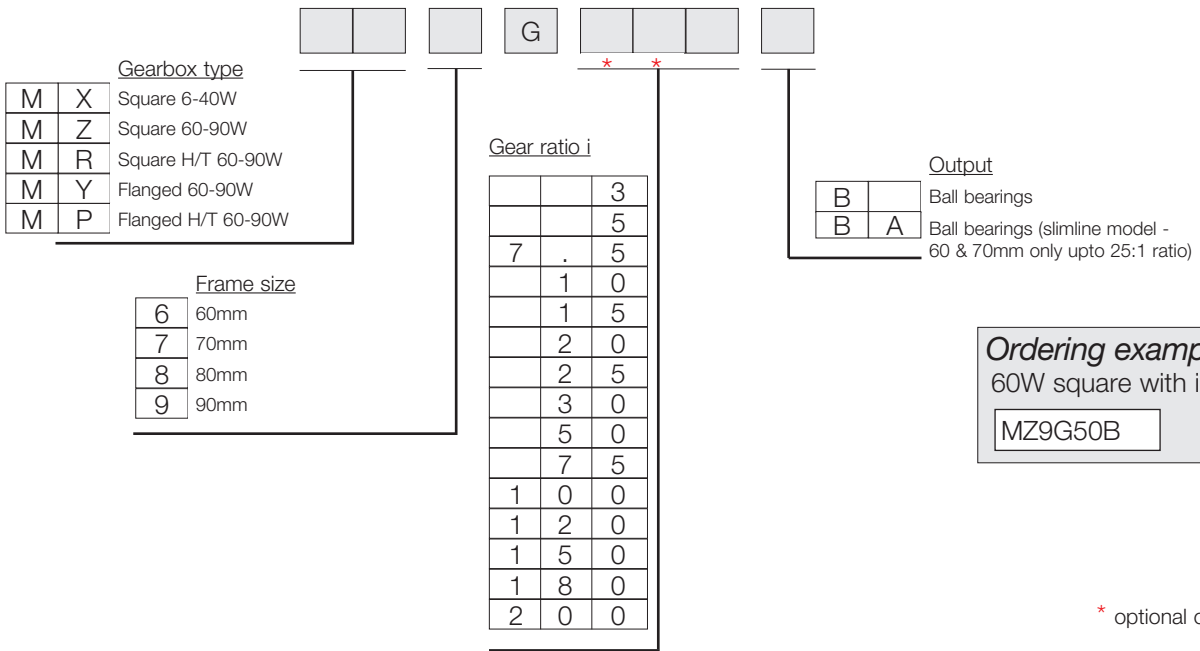
Component part number coding

Motor



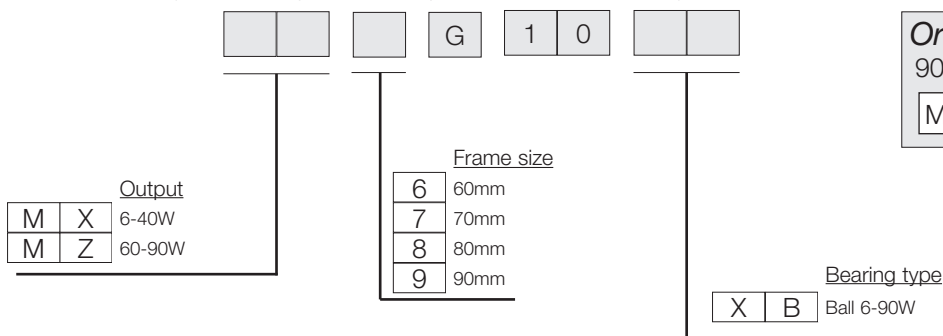
Ordering example
25W 1 phase 230V brake motor with terminal box.
M8RX25GR4GG1

Gearbox



Ordering example
60W square with i = 50
MZ9G50B

Decimal Gearbox (additional requirement for speeds 7.5 r/min and below)



Ordering example
90W decimal gearbox
MZ9G10XB

40W



Induction motors with spur gears

- All ball bearing gearbox as standard, rated to 10,000 hrs lifetime
- Continuous duty S1/reversible S2
- IP22 for leadwire and IP54 for terminal box
- Virtually silent running
- Globally approved CE/ UL/ cUL/CCC
- Supplied with run capacitor

Technical data, motor

Article No	Motor type	Supply voltage VAC/Hz	Output power	Speed r/min	Torque Ncm	Current A	Capacitor μ F	Weight with gearbox Kg
M91X40G4GGA	Lead wire	1-Phase 230/50	40	1275	30	0,37	2,5 (450V)	3,6/4,0
M91X40GK4GGA	T-box	1-Phase 230/50	40	1275	30	0,37	2,5 (450V)	3,6/4,0
M9MX40G4YGA	3x230v, Lead wire	3-Phase 230/50	40	1340	27	0,28	2,5 (450V)	3,6/4,0
M9MX40GK4YGA	3x230v, T-box	3-Phase 230/50	40	1340	27	0,28	2,5 (450V)	3,6/4,0
M9MX40GK4CGA	400v, T-box	3-Phase 400	40	1350	28	0,15	2,5 (450V)	4,0
M9RX40GK4GG1	Reversible	1-Phase 230/50	40	1300	33	0,40	3,5 (450V)	4,0
M9RX40GR4GG1	Brake	1-Phase 230/50	40	1350	28	0,36	3,5 (450V)	4,6
M91X40GN4GG1	Variable speed (with tacho)	1-Phase 230/50	40	90-1200	7,8-30	0,72	2,5 (450V)	4,0

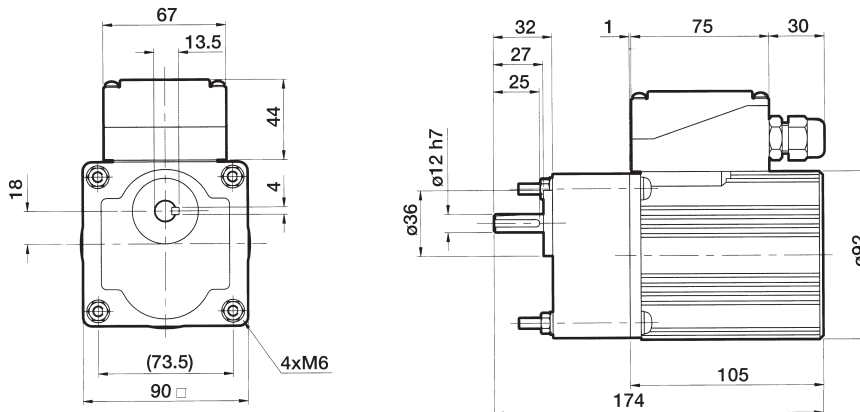
Technical data, gearbox

Nominal speed r/min	500	300	150	100	75	50	30	20	15	12.5	10	8.3	
Ratio	3	5	10	15	20	30	50	75	100	120	150	180	Max gearbox output torque 9.80Nm
Nominal torque Nm	0.66	1.08	2.25	3.23	4.41	6.37	9.80	9.80	9.80	9.80	9.80	9.80	

Output speed based on synchronous motor speed (1500 r/min). Actual speed depends on load resulting in 2-20% slower.

Dimensions (inc. gearbox)

Motor with terminal box



Add 35mm to length for decimal gearbox.

Add 46mm to length for brake motor.

Ordering information

Part number	Description
M9B2	Foot mount (forward feet)
M9B3	Foot mount (reverse feet)

Part number	Description
MX9G3B	Ratio 3:1
MX9G5B	Ratio 5:1
MX9G10B	Ratio 10:1
MX9G15B	Ratio 15:1
MX9G20B	Ratio 20:1

Part number	Description
MX9G30B	Ratio 30:1
MX9G50B	Ratio 50:1
MX9G75B	Ratio 75:1
MX9G100B	Ratio 100:1
MX9G120B	Ratio 120:1
MX9G150B	Ratio 150:1
MX9G180B	Ratio 180:1
MX9G10XB	Inter decimal gearbox 10:1

Other gearbox ratios are available on request