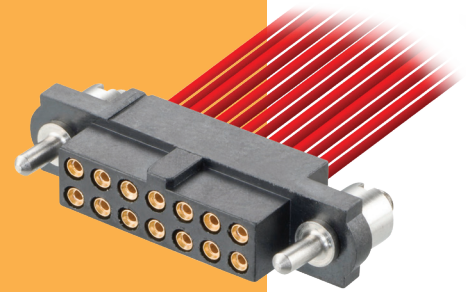


# Datamate J-Tek Connectors

## Female Crimp Kit - Guide Pin, 101Lok

- Guide pin style includes board mount fixing.
- 101Lok fixing gives secure, fast and simple mating; no special tooling required. Just a simple 101-degree turn is required to fix the connectors together.
- Connectors mate with Datamate J-Tek male connectors with applicable jackscrews or 101Lok fixings.
- Part numbers are for a complete kit of a housing and the applicable number of contacts.



DATAMATE J-TEK

GUIDE PIN JACKSCREWS	101LOK														
<p><b>Board Mount Nut, 2 per connector</b></p> <table border="1"> <thead> <tr> <th colspan="2">CALCULATION</th> </tr> </thead> <tbody> <tr> <td><b>A</b></td> <td>B + 12</td> </tr> <tr> <td><b>B</b></td> <td>Total no. of contacts - 2</td> </tr> <tr> <td><b>C</b></td> <td>B + 7</td> </tr> </tbody> </table>	CALCULATION		<b>A</b>	B + 12	<b>B</b>	Total no. of contacts - 2	<b>C</b>	B + 7							
CALCULATION															
<b>A</b>	B + 12														
<b>B</b>	Total no. of contacts - 2														
<b>C</b>	B + 7														
<p><b>TOOLS</b></p> <p><b>Recommended Crimp Tool</b> - M22520/2-01  <b>Positioner</b> - T5747  <b>Contact Insertion/Removal Tool</b> - Z80-280</p> <ul style="list-style-type: none"> <li>Spare and pre-cabled contacts shown on following pages.</li> <li>Instruction sheets available at <a href="http://www.harwin.com/instructions">www.harwin.com/instructions</a>.</li> </ul>	<p><b>WIRE STRIPPING DETAILS</b></p>														
<p><b>HOW TO ORDER</b></p>															
<p style="text-align: center;"><b>M80 - 4 X1 XX XX FX</b></p> <table border="1"> <thead> <tr> <th>SERIES CODE</th> <th>JACKSCREW</th> </tr> </thead> <tbody> <tr> <td><b>C1</b> Small Bore (24-28 AWG)</td> <td><b>F3</b> Guide Pin</td> </tr> <tr> <td><b>D1</b> Large Bore (22 AWG)</td> <td><b>FC</b> 101Lok</td> </tr> <tr> <td><b>E1</b> Extra Small Bore (28-32 AWG)</td> <td></td> </tr> </tbody> </table> <table border="1"> <thead> <tr> <th>FINISH</th> <th>TOTAL NO. OF CONTACTS</th> </tr> </thead> <tbody> <tr> <td><b>05</b> Gold</td> <td><b>04, 06, 08, 10, 12, 14, 20, 26, 34, 42, 50</b></td> </tr> <tr> <td><b>42</b> Gold + Tin</td> <td></td> </tr> </tbody> </table>		SERIES CODE	JACKSCREW	<b>C1</b> Small Bore (24-28 AWG)	<b>F3</b> Guide Pin	<b>D1</b> Large Bore (22 AWG)	<b>FC</b> 101Lok	<b>E1</b> Extra Small Bore (28-32 AWG)		FINISH	TOTAL NO. OF CONTACTS	<b>05</b> Gold	<b>04, 06, 08, 10, 12, 14, 20, 26, 34, 42, 50</b>	<b>42</b> Gold + Tin	
SERIES CODE	JACKSCREW														
<b>C1</b> Small Bore (24-28 AWG)	<b>F3</b> Guide Pin														
<b>D1</b> Large Bore (22 AWG)	<b>FC</b> 101Lok														
<b>E1</b> Extra Small Bore (28-32 AWG)															
FINISH	TOTAL NO. OF CONTACTS														
<b>05</b> Gold	<b>04, 06, 08, 10, 12, 14, 20, 26, 34, 42, 50</b>														
<b>42</b> Gold + Tin															

All dimensions in mm.