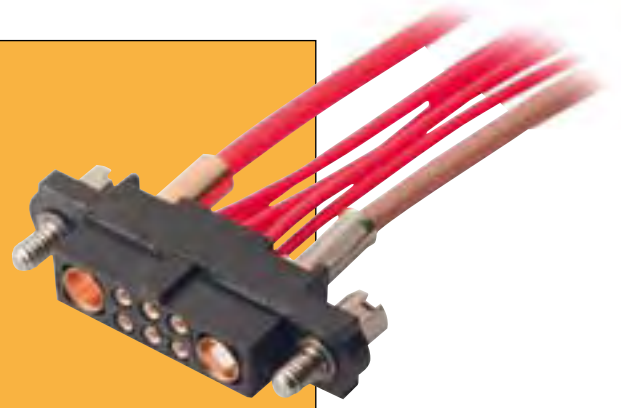


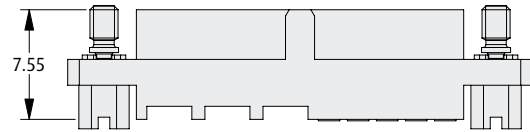
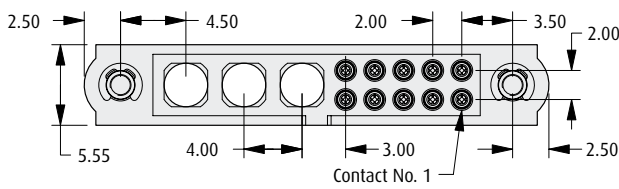
Datamate Connectors

Female Crimp

- ❖ Customer defined contact configurations.
- ❖ Polarised mouldings.
- ❖ Fully shrouded contacts.
- ❖ Large bore 22 AWG, small bore 24-28 AWG.
- ❖ Jackscrews are assembled where specified.
- ❖ Signal contacts are supplied loose and are rear insertable.
- ❖ Mates with connectors shown on pages 38 to 40.

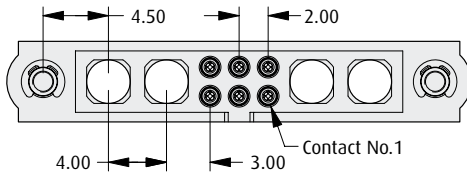


NON-SYMMETRICAL CONTACT CONFIGURATION



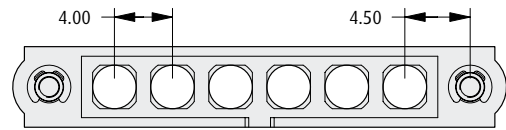
EXAMPLE OF PART NUMBER M80-4X110XXXX-00-000-03-XXX

SYMMETRICAL CONTACT CONFIGURATION



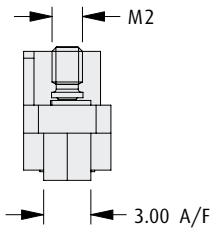
EXAMPLE OF PART NUMBER M80-4X106XXXX-02-XXX-02-XXX

SPECIAL CONTACTS ONLY



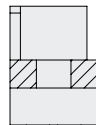
EXAMPLE OF PART NUMBER M80-4000000XX-06-XXX-00-000

WITH JACKSCREWS



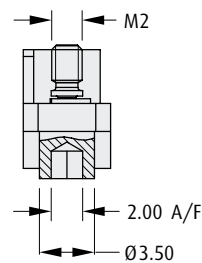
CRIMP SIZE	SERIES CODE
Large Bore	M80-4D1XXF1
Small Bore	M80-4C1XXF1

NO JACKSCREWS



CRIMP SIZE	SERIES CODE
Large Bore	M80-4D1XX00
Small Bore	M80-4C1XX00

WITH BOARD-MOUNT JACKSCREWS



CRIMP SIZE	SERIES CODE
Large Bore	M80-4D1XXF2
Small Bore	M80-4C1XXF2

All dimensions in mm.

www.harwin.com

