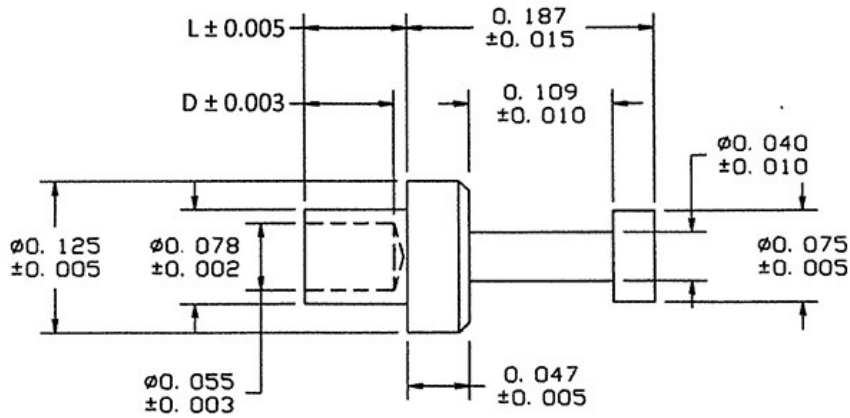


DRAWING NUMBER:	15R-102-X-XX
PRODUCT GROUP:	TERMINALS
SUB-GROUP:	MILITARY NON-INSULATED TERMINALS
DESCRIPTION:	NON-INSULATED TURRET TERMINAL



BOARD / PANEL MOUNTING METHOD	MOUNTING HOLE SIZE	DRILL SIZE	FEED THRU COMBINATION
SWAGE MOUNT	0.082" ± 0.001	#45	N/A

PART NO. STRUCTURE:

15R-102 - X - XX
 PART SERIES DIMENSION FINISH

MATERIAL OPTIONS:

15R-102-X-XX

COMPONENT	MATERIAL	MATERIAL AND SPECIFICATION
TERMINAL	PHOSPHOR BRONZE	PHOSPHOR BRONZE PER ASTM B139, ALLOY C54400

DIMENSION OPTIONS:

15R-102-X-XX

DIMENSION	K	OVERALL LENGTH	SHANK LENGTH (L)	BOARD/PANEL THICKNESS
1	N/A	0.265"	0.078"	1/32"
2	N/A	0.296"	0.109"	1/16"
3	N/A	0.327"	0.140"	3/32"
4	N/A	0.357"	0.170"	1/8"

FINISH - PLATING OPTIONS:

15R-102-X-XX

FINISH CODE	COMPONENT	FINISH	FINISH AND SPECIFICATION
05	TERMINAL	ELECTRO-SOLDER	0.000300"MIN. ELECTRO-SOLDER PER SAE-AMS-P-81728 OVER 0.000100"MIN. COPPER PER SAE-AMS-2418
088	TERMINAL	BRIGHT TIN-LEAD	0.000300"MIN. BRIGHT TIN-LEAD (Sn93%-Pb7%) PER ASTM B545 OVER 0.000100"MIN. COPPER PER SAE-AMS-2418
095	TERMINAL	HOT SOLDER DIP	0.000100"MIN. HOT SOLDER DIP USING Sn60 PER IPC-J-STD-006 OVER 0.000100"MIN. COPPER PER SAE-AMS-2418

TOLERANCES:*

DECIMAL	FRACTIONAL	ANGULAR	DRAWING ORIGATION DATE	LAST MODIFICATION DATE
N/A	N/A	N/A	4/21/1997	3/1/2017

*All dimensions are in inches.

RoHS COMPLIANCE:

15R-102-1-XX

PART NUMBER	RoHS COMPLIANT
15R-102-1-05	NO
15R-102-1-088	NO
15R-102-1-095	NO

15R-102-2-XX

PART NUMBER	RoHS COMPLIANT
15R-102-2-05	NO
15R-102-2-088	NO
15R-102-2-095	NO

15R-102-3-XX

PART NUMBER	RoHS COMPLIANT
15R-102-3-05	NO
15R-102-3-088	NO
15R-102-3-095	NO

15R-102-4-XX

PART NUMBER	RoHS COMPLIANT
15R-102-4-05	NO
15R-102-4-088	NO
15R-102-4-095	NO

MILITARY REFERENCE SPECIFICATIONS:

15R-102-1-XX

PART NUMBER	MIL SPECIFICATION	MIL PART NUMBER	COMMERCIAL ITEM DESCRIPTION (CID) SPECIFICATION	CID PART NUMBER
15R-102-1-05	MIL-T-55155/29	M55155/29XB03	A-A-59126/29	AA59126/29XB03
15R-102-1-088	MIL-T-55155/29	M55155/29XD03	A-A-59126/29	AA59126/29XD03
15R-102-1-095	MIL-T-55155/29	M55155/29XC03	A-A-59126/29	AA59126/29XC03

15R-102-2-XX

PART NUMBER	MIL SPECIFICATION	MIL PART NUMBER	COMMERCIAL ITEM DESCRIPTION (CID) SPECIFICATION	CID PART NUMBER
15R-102-2-05	MIL-T-55155/29	M55155/29XB06	A-A-59126/29	AA59126/29XB06

Continued on next page...

MILITARY REFERENCE SPECIFICATIONS CONTINUED:

15R-102-2-XX

PART NUMBER	MIL SPECIFICATION	MIL PART NUMBER	COMMERCIAL ITEM DESCRIPTION (CID) SPECIFICATION	CID PART NUMBER
15R-102-2-088	MIL-T-55155/29	M55155/29XD06	A-A-59126/29	AA59126/29XD06
15R-102-2-095	MIL-T-55155/29	M55155/29XC06	A-A-59126/29	AA59126/29XC06

15R-102-3-XX

PART NUMBER	MIL SPECIFICATION	MIL PART NUMBER	COMMERCIAL ITEM DESCRIPTION (CID) SPECIFICATION	CID PART NUMBER
15R-102-3-05	MIL-T-55155/29	M55155/29XB09	A-A-59126/29	AA59126/29XB09
15R-102-3-088	MIL-T-55155/29	M55155/29XD09	A-A-59126/29	AA59126/29XD09
15R-102-3-095	MIL-T-55155/29	M55155/29XC09	A-A-59126/29	AA59126/29XC09

15R-102-4-XX

PART NUMBER	MIL SPECIFICATION	MIL PART NUMBER	COMMERCIAL ITEM DESCRIPTION (CID) SPECIFICATION	CID PART NUMBER
15R-102-4-05	MIL-T-55155/29	M55155/29XB12	A-A-59126/29	AA59126/29XB12
15R-102-4-088	MIL-T-55155/29	M55155/29XD12	A-A-59126/29	AA59126/29XD12
15R-102-4-095	MIL-T-55155/29	M55155/29XC12	A-A-59126/29	AA59126/29XC12

TOOLING:

INSTALLATION TOOL: ARBOR PRESS	INSTALLATION TOOL: ANVIL (ARBOR PRESS OPERATED)	INSTALLATION TOOL: PRESS-FIT / ROLL SWAGE / RIVET PUNCH (ARBOR PRESS OPERATED)	INSTALLATION TOOL: FLARE SWAGE PUNCH (ARBOR PRESS OPERATED)
TM1	TA125-77-31	TP78-55	TFLP90-175

NOTES:

DATASHEET NOTES
N/A

INSTRUCTION NOTES
SEE GENERAL SWAGING INSTALLATION INSTRUCTION ON CONCORD ELECTRONICS' WEBSITE WWW.CONCORD-ELECTRONICS.COM