

Customer Information Sheet

DRAWING No.: M22-3080046

SHEET 2 OF 2

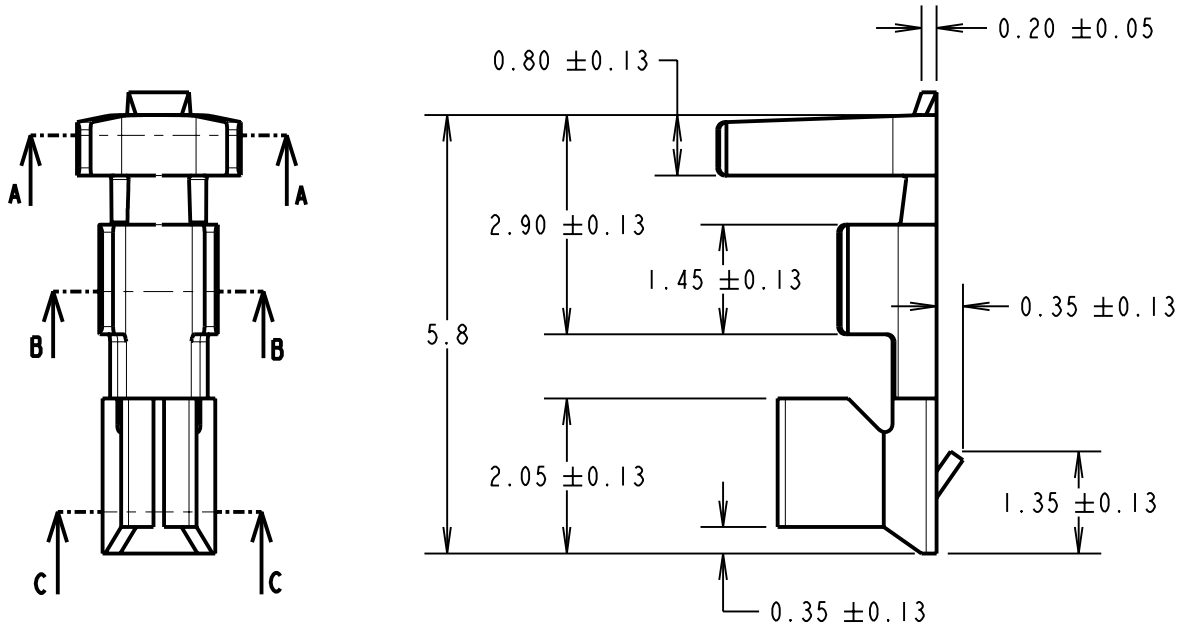
IF IN DOUBT - ASK

©

NOT TO SCALE

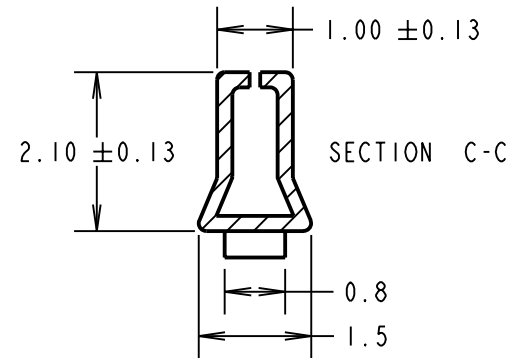
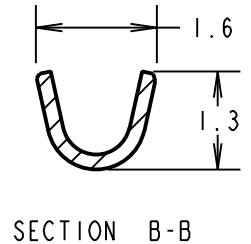
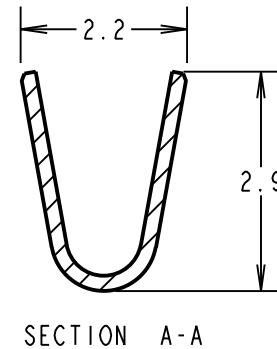
THIRD ANGLE PROJECTION

ALL DIMENSIONS IN mm



SPECIFICATIONS:

MATERIAL = PHOSPHOR BRONZE
 FINISH = 2.5µ 100% TIN OVER NICKEL
 ELECTRICAL:
 VOLTAGE RATING = 250V AC/DC
 CURRENT RATING = 2A AC/DC
 DIELECTRIC STRENGTH = 800V AC FOR 1 MINUTE
 INSULATION RESISTANCE = 1,000 MEGOHMS MIN
 ENVIRONMENTAL:
 TEMPERATURE RANGE = -25°C TO +85°C



NOTES:

1. TO BE USED WITH CRIMP MOULDING M22-307XX00, SPECIFICATION SHOWN BELOW APPLY WHEN ASSEMBLED IN THIS MOULDING.
2. CONTACTS SUPPLIED LOOSE IN QUANTITIES OF 100
3. ACCEPTS WIRE RANGE 24-30 AWG.
4. DIAMETER OF WIRE INSULATION = \varnothing 1.4mm MAX.
5. FOR HAND CRIMPING ONTO WIRE, USE HAND TOOL Z22-020 (INSTRUCTION SHEET IS-05). STRIP WIRE BY 1.5 - 2.0mm BEFORE CRIMPING.

RA	10	09.06.10	10764
NAME	ISS.	DATE	C/NOTE
APPROVED:		R. ADDE	
CHECKED:		W. J. BOURNE	
DRAWN:		D. BECK	
CUSTOMER REF.:			
ASSEMBLY DRG.:			

HARWIN

HARWIN USA
 TEL: 603 893 5376
 FAX: 603 893 5396
 mis@harwin.com

HARWIN Europe (UK)
 TEL: 023 9231 4545
 FAX: 023 9231 4590
 mis@harwin.co.uk

HARWIN Asia
 TEL: +65 6 779 4909
 FAX: +65 6 779 3868
 mis@harwin.com.sg

THIS DRAWING AND ANY INFORMATION OR DESCRIPTIVE MATTER SET OUT HEREON ARE CONFIDENTIAL AND COPYRIGHT PROPERTY OF THE HARWIN GROUP AND MUST NOT BE DISCLOSED, LOANED, COPIED OR USED FOR MANUFACTURING, TENDERING OR FOR ANY OTHER PURPOSE WITHOUT THEIR WRITTEN PERMISSION.

TOLERANCES
 X. = ±1mm
 X.X = ±0.25mm
 X.XX = ±0.10mm
 X.XXX = ±0.01mm
 ANGLES = ±5°
 UNLESS STATED

MATERIAL:
 SEE ABOVE

FINISH: SEE ABOVE

S/AREA: mm²

TITLE:
 2mm CRIMP TERMINAL (LOOSE)

DRAWING NUMBER:
 M22-3080046

SHT
 2 OF 2