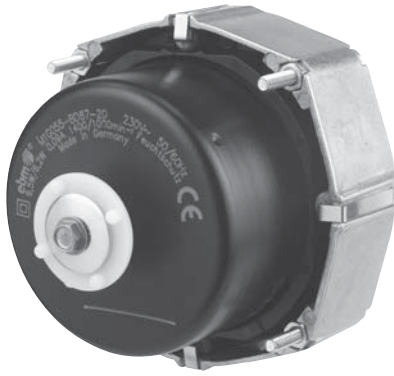


# M1G055 Series

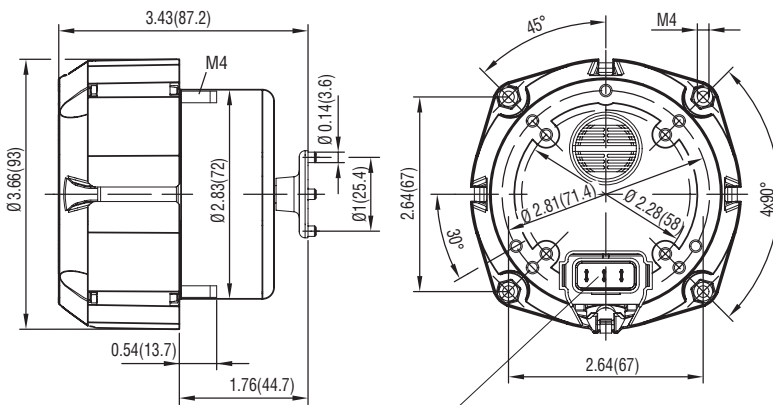
# Motors

## 1/50 HP Refrigeration Fan Motor (ESM)

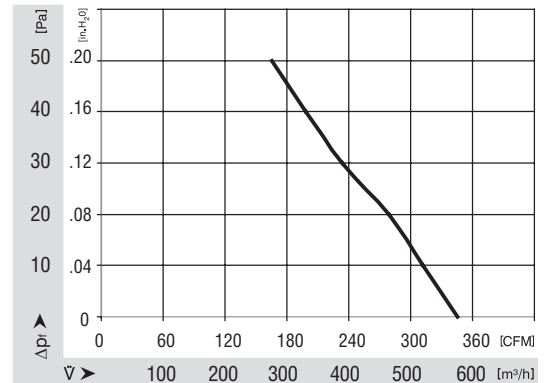
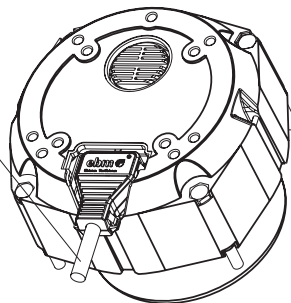


- EC-motor with completely integrated electronics
- AC-line operation
- Proven external rotor motor principle
- Power output up to 14 Watt at 1550 RPM
- Moisture protection suitable for commercial refrigeration
- Ball bearings
- High life expectancy > 40,000 hours

Part Number	CFM @ 0	VAC	Hertz	Power Output (W)	Max. Amb. Temp. C	Speed (RPM)	Wgt. (lbs)
M1G055-BD97-47	338*	115	50/60	14	40	1550	1.87



incl. mains cable with plug (450 mm length)



\*Note: Measured with 5-bladed sheet metal impeller 9-inch/22°

# M1G055 Series cont. Motors

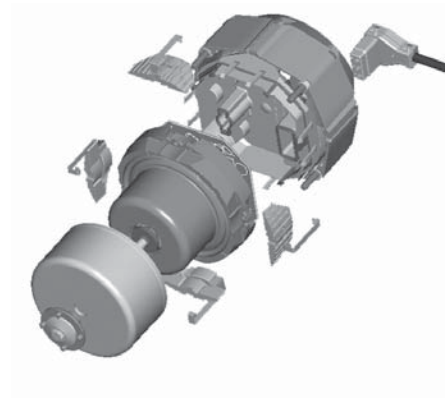
## 1/50 HP Refrigeration Fan Motor (ESM)



- Substitutes standard motors due to common footprint
- Use with standard sheet metal impellers
- Complete range of accessories:
  - ▶ Flat fan guards
  - ▶ Basket fan guards
  - ▶ Wall-rings with motor mounts

### Technical Data

▶ <b>Speed:</b>	1550 RPM
▶ <b>Rated Voltage:</b>	115 VAC
▶ <b>Mains Frequency:</b>	50/60 Hz
▶ <b>Approvals:</b>	CE, VDE EN60335, UL1004
▶ <b>Interference Emission:</b>	EN50081-1
▶ <b>Interference Immunity:</b>	EN61000-6-2
▶ <b>Protection Class:</b>	2
▶ <b>Type of Protection:</b>	IP44
▶ <b>Weight:</b>	1.87 lbs (0.85 kg)
▶ <b>Ambient Temperature:</b>	-30° C - 40° C



### Optimized Efficiency

- ▶ Efficiency > 65 %
- ▶ Only 1/3 of the power input of shaded-pole motors
- ▶ Little heat load
- ▶ Quick pay back

Comparison in efficiency curves of the ESM and standard shaded-pole motor

