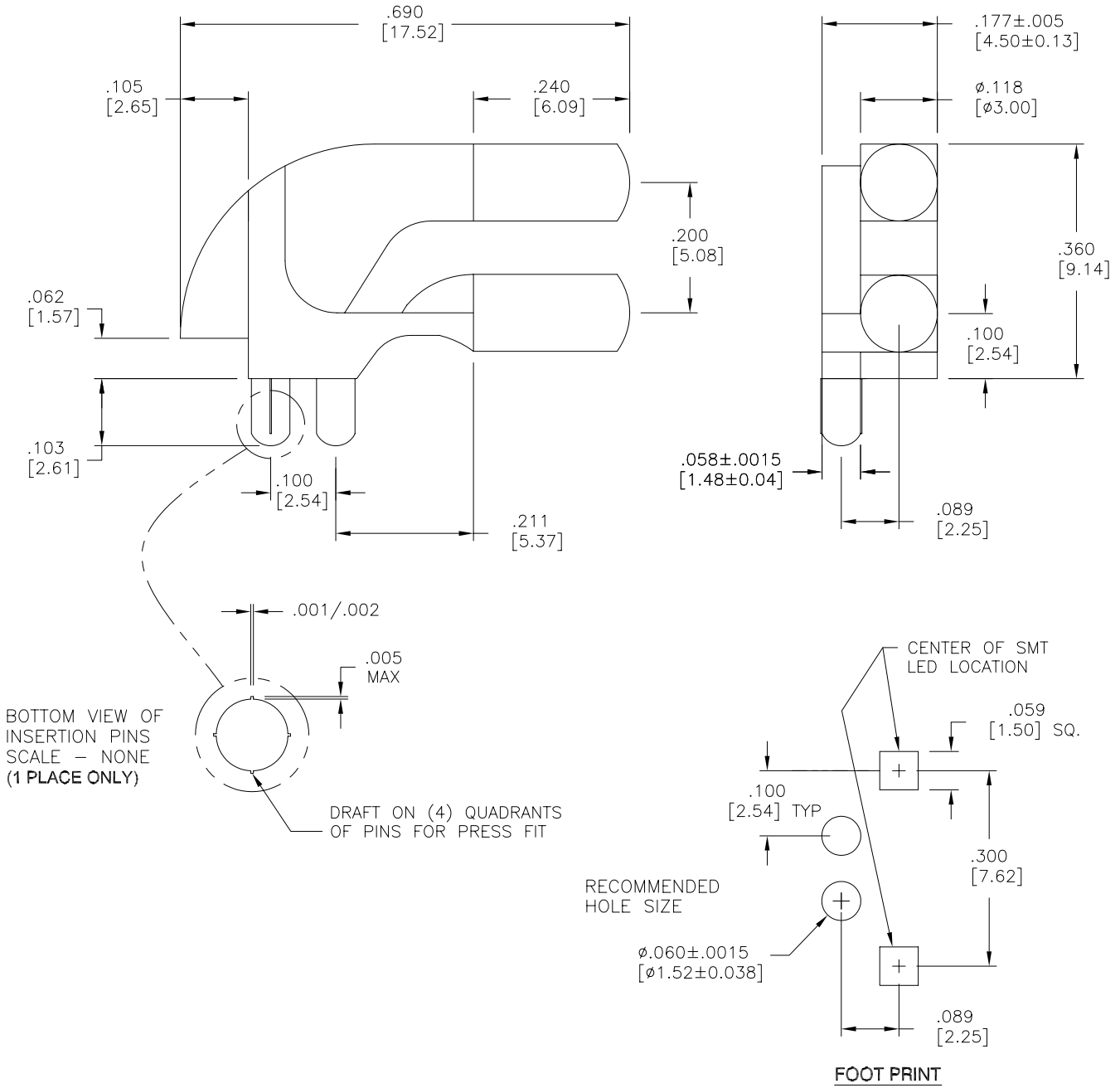


LTR	REVISION	DATE	APPD
G	020212-GP01: UPDATED NOTES	02-02-12	GP



NOTES:

1. ALL DIMENSIONS ARE IN INCHES [MILLIMETERS].
2. MATERIAL: CLEAR, POLYCARBONATE UL94V-0
3. TEMPERATURE RANGE: -40°C TO +85°C (-40°F TO 185°F)

REVISION NOTIFICATION

<input type="checkbox"/>	PMA
<input type="checkbox"/>	UL
<input type="checkbox"/>	MADE IN USA
<input type="checkbox"/>	CUSTOMER _____
<input type="checkbox"/>	OTHER

LED[®]
LEDTRONICS, INC.[™]
 23105 KASHIWA COURT
 TORRANCE, CA 90505

-PROPRIETARY-
 This document contains Proprietary information of LEDTRONICS, INC. It may not be copied, used or disclosed for any purpose without the prior express written consent of LEDTRONICS, INC.

.XXX ± .010 TOLERANCE PER ANSI-Y14.5
 .XX ± .025 (UNLESS OTHERWISE STATED)
 ANGLES ± 0°,30'
 FRACT. ± 1/32

TITLE						LTP003-0CW-101							
DWG NO			SCALE			SHEET			DATE				
CMMS0173			4:1			1 OF 1			09-15-00				
CODE IDENT NO.		DWG BY		CHK BY		QA		RD		MFG		R&D	
8Z410		RM 09-15-00				02-03-12		02-02-12		02-02-12		BJ	