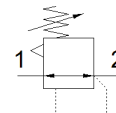
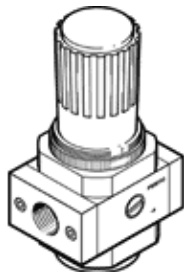


Pressure regulator LR-1/8-D-O-MINI

Part number: 162590
Classic

FESTO

With threaded connection plate, without pressure gauge
Modern alternatives can be found by entering the first four characters of the type code in the search field.



Data sheet

| Feature | Value |
|---|--|
| Size | Mini |
| Series | D |
| Actuator lock | Rotary knob with lock |
| Assembly position | Any |
| Design structure | directly-controlled diaphragm regulator |
| Controller function | Output pressure constant with initial pressure compensation with secondary exhaust |
| Pressure gauge | Prepared for G1/8 |
| Working pressure | 1 ... 16 bar |
| Pressure regulation range | 0.5 ... 12 bar |
| Max. pressure hysteresis | 0.2 bar |
| Standard nominal flow rate | 800 l/min |
| Operating medium | Compressed air in accordance with ISO8573-1:2010 [7:4:4] Inert gases |
| Note on operating and pilot medium | Lubricated operation possible (subsequently required for further operation) |
| Corrosion resistance classification CRC | 2 - Moderate corrosion stress |
| Air purity class at output | Compressed air in accordance with ISO8573-1:2010 [7:4:4] Inert gases |
| Medium temperature | -10 ... 60 °C |
| Ambient temperature | -10 ... 60 °C |
| Maritime classification | see certificate |
| Product weight | 300 g |
| Mounting type | Front panel installation Line installation with accessories |
| Pneumatic connection, port 1 | G1/8 |
| Pneumatic connection, port 2 | G1/8 |
| Materials note | Free of copper and PTFE Conforms to RoHS |
| Material of connecting plate | Zinc die-casting |
| Material seals | NBR |
| Material housing | Zinc die-casting |