

LKZ16L1

✓ ACTIVE

LKZ

TE Internal #: 241640-000

AC Current Phase 1, Width 16 mm [.63 in], Height 16 mm [.63 in],

Black, Vinyl, LKZ, Safety Symbols & Electrical Signs

[View on TE.com >](#)



Identification & Labeling > Labels > Safety Symbols & Electrical Signs > LKZ Vinyl Electric Symbol Labels



Electrical Symbol Type: **AC Current Phase 1**

Label Style: **Die-Cut**

Label Adhesive Type: **Permanent Acrylic**

Product Width: **16 mm [.63 in]**

Product Height: **16 mm [.63 in]**

[All LKZ Vinyl Electric Symbol Labels \(25\)](#)

Features

Product Type Features

Electrical Symbol Type	AC Current Phase 1
------------------------	--------------------

Body Features

Primary Product Color	Black
Primary Product Material	Vinyl

Dimensions

Product Width	16 mm [.63 in]
Product Height	16 mm [.63 in]

Usage Conditions

Operating Temperature Range	-30 – 120 °C [-22 – 278 °F]
-----------------------------	-----------------------------

Printer/Label Features

Number of Labels Across	1
Labels per Sheet	10
Label Style	Die-Cut

Packaging Features

Packaging Quantity	10
Packaging Method	Poly Bag



Other

Label Adhesive Type	Permanent Acrylic
---------------------	-------------------

Product Compliance

[For compliance documentation, visit the product page on TE.com>](#)

EU RoHS Directive 2011/65/EU	Compliant
EU ELV Directive 2000/53/EC	Compliant
China RoHS 2 Directive MIIT Order No 32, 2016	No Restricted Materials Above Threshold
EU REACH Regulation (EC) No. 1907/2006	Current ECHA Candidate List: JUNE 2024 (241) Candidate List Declared Against: JUL 2021 (219) Does not contain REACH SVHC
Halogen Content	Not Yet Reviewed for halogen content
Solder Process Capability	Not applicable for solder process capability

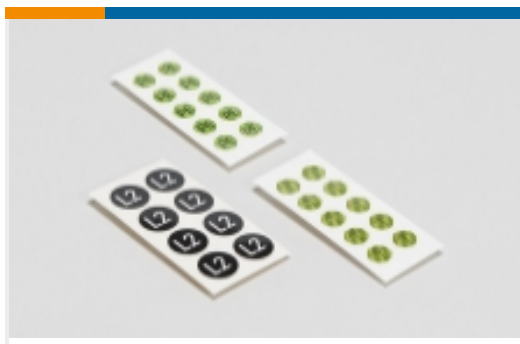
Product Compliance Disclaimer

This information is provided based on reasonable inquiry of our suppliers and represents our current actual knowledge based on the information they provided. This information is subject to change. The part numbers that TE has identified as EU RoHS compliant have a maximum concentration of 0.1% by weight in homogenous materials for lead, hexavalent chromium, mercury, PBB, PBDE, DBP, BBP, DEHP, DIBP, and 0.01% for cadmium, or qualify for an exemption to these limits as defined in the Annexes of Directive 2011/65/EU (RoHS2). Finished electrical and electronic equipment products will be CE marked as required by Directive 2011/65/EU. Components may not be CE marked. Additionally, the part numbers that TE has identified as EU ELV compliant have a maximum concentration of 0.1% by weight in homogenous materials for lead, hexavalent chromium, and mercury, and 0.01% for cadmium, or qualify for an exemption to these limits as defined in the Annexes of Directive 2000/53/EC (ELV). Regarding the REACH Regulation, the information TE provides on SVHC in articles for this part number is based on the latest European Chemicals Agency (ECHA) 'Guidance on requirements for substances in articles' posted at this URL: <https://echa.europa.eu/guidance-documents/guidance-on-reach>

Compatible Parts

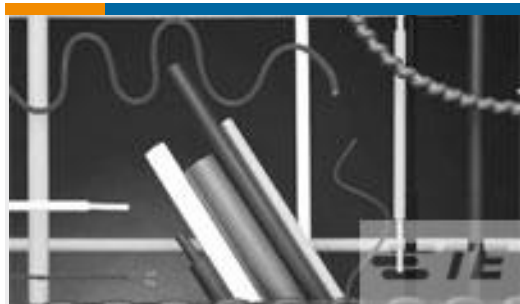


Also in the Series | **LKZ**



Safety Symbols & Electrical Signs(25)

Customers Also Bought



TE Part #5038494001
DCPT-19/9-45-SP



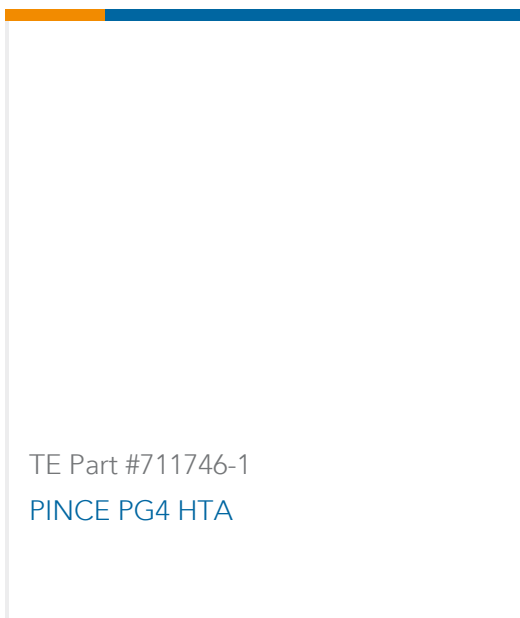
TE Part #708798-000
LKZ Vinyl Electric Symbol Labels



TE Part #8638624002
RNF-3000-18/6-0-SP



TE Part #E43601-000
HEL-2070.1-Z-AK



TE Part #711746-1
PINCE PG4 HTA

Documents

Datasheets & Catalog Pages

IDENTIFICATION SELECTION GUIDE

English

SFATEY_AND_ELECTRICAL_SYMBOL_LABELS

English