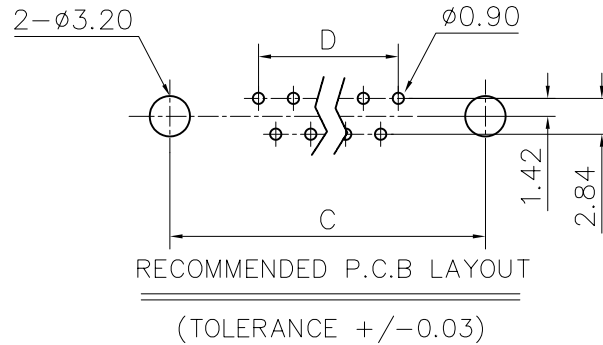
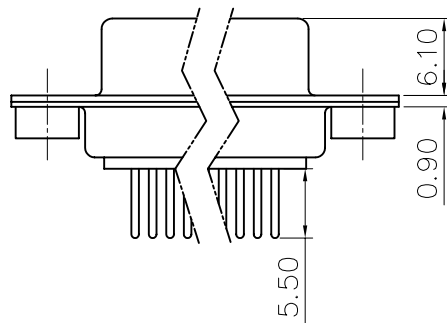
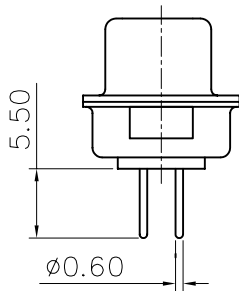
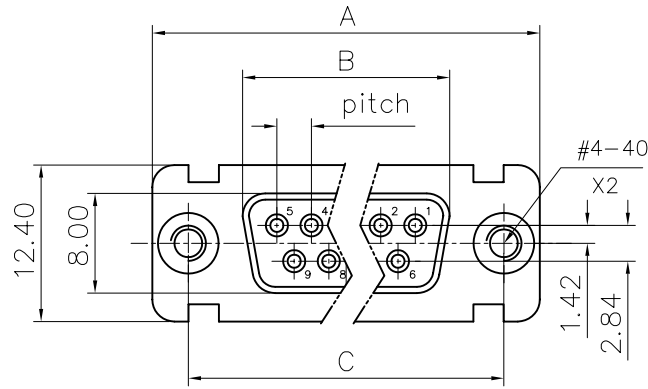


This document is the property of Amphenol Corporation and is delivered on the express condition that it is not to be disclosed, reproduced or used, in whole or in part, for manufacture or sale by anyone other than Amphenol Corporation without its prior consent, & that no right is granted to disclose or to use any information in this document.



Customer drawing

DIM.S SHELL	A	B	C	D	Pitch
9	30.70	16.40	25.00	10.96	2.74
15	39.00	24.80	33.30	19.18	2.74
25	52.90	38.50	47.00	33.12	2.77
37	69.20	54.90	63.50	49.68	2.77

REVISIONS				
SYM	ECN	DESCRIPTION	DATE	APPROVED
1			11/26/07	

D-SUB TECHNICAL DATA

SHELL : Steel 2.5um(100u") min tin over 1.25um(50u") min nickel
 BODY: Glass filled thermoplastic.
 Flame retardant to UL94 V-0 Color Black
 CONTACTS: Phosphor bronze
 0.1um(4u") min gold over 1.25um(50u") min nickel
 REAR INSERT: Brass,100u" min tin over 50u" min nickel.
 BOARDLOCK: Brass,100u" min tin over 50u" min nickel.
 ELECTRICAL : Voltage rating : 300 V RMS at 50 Hz
 withstanding volatge:1000V AC/rms 50Hz for i minute
 Current rating 7.5A.
 Insulation resistance >5000 M Ohms
 Contact resistance 20 m Ohms max.
 CLIMATIC; Temperature range -55 °C up to 85°C
 Damp heat 21 days(40 °C-95% HR)
 MARKING: Amphenol-...(Series No.)
 Commercial reference
 Manufacturing date

PRODUCT CODE

L 77D X H XX S OL2

L: RoHS Compliance

77D: tinned shell for receptacle

Shell Size :E,A,B,C

Mounting options:
H=rear insert 4-40

Straight PCB:
OL2=length 5.5mm
tail Ø0.6mm

Contact type:
S:Female
P: Male

Configuration: 09,15,25,37

UNLESS OTHERWISE SPECIFIED TOLERANCES		APPROVAL		DATE
U.S.	METRIC	DRAWN	Suming Li	11/26/07
.X +/-	0.50	CHECKED	Lik.wang	11/26/07
.XX +/-	0.30	CHECKED		
.XXX +/-	0.20			
FRACTIONS +/-				
ANGLES +/-	2'			
FOR MATERIALS AND FINISHES SEE NOTES		DRAWING FILE :		
REMOVE SHARP EDGES		ANGLE OF PROJECTION		
DIMENSIONS				
U.S.	INCHES			
METRIC	MM			

Amphenol®

TITLE
machined contacts connector, D series

SIZE	DRAWING NO.	REV.
A4	C L77DXHXXSOL2	1
SCALE	NONE	SHEET 1 OF 1