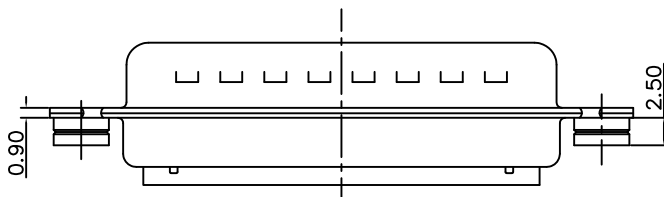
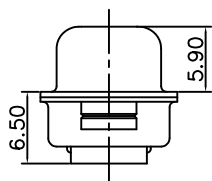
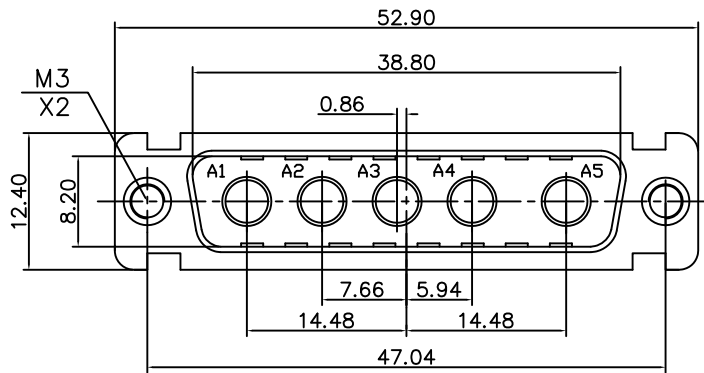


This document is the property of Amphenol Corporation and is delivered on the express condition that it is not to be disclosed, reproduced or used, in whole or in part, for manufacture or sale by anyone other than Amphenol Corporation without its prior consent, & that no right is granted to disclose or to use any information in this document.



Customer Drawing

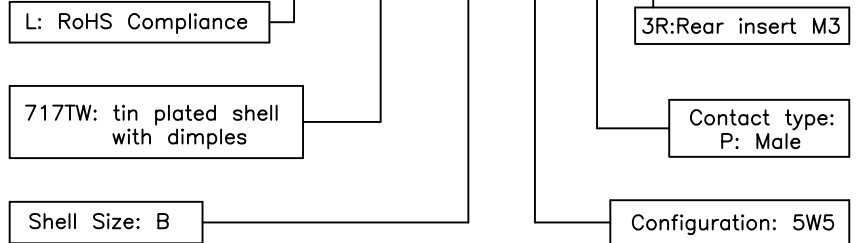
REVISIONS				
SYM	ECN	DESCRIPTION	DATE	APPROVED
1	HK--	First Release Drawing	06/08/12	IP

D-SUB TECHNICAL DATA

SHELL : Steel, 2.5um(100u") min tin over 1.25um(50u") min nickel
 BODY : Glass filled thermoplastic.
 Flame retardant to UL94 V-0, Color black
 REAR INSERT : Brass, 100u" min tin over 50u" min nickel
 ELECTRICAL : Withstanding Voltage >1000 V RMS at 50 Hz for one minute
 Insulation resistance >5000 M Ohms
 CLIMATIC : Temperature range -55°C up to +155°C
 Damp heat 56 days(40°C-95% HR)
 MARKING : Amphenol...(Series No.)
 Manufacturing date
 Commercial reference

PRODUCT CODE

L 717TW B 5W5 P 3R



UNLESS OTHERWISE SPECIFIED TOLERANCES U.S. METRIC .X +/- 0.50 .XX +/- 0.30 .XXX +/- 0.20 FRACTIONS +/- ANGLES +/- 5° FOR MATERIALS AND FINISHES SEE NOTES REMOVE SHARP EDGES DIMENSIONS U.S. INCHES METRIC MM	APPROVAL DRAWN Mary Ma 06/08/12 CHECKED Tony Tang 06/08/12 CHECKED		DATE 06/08/12
	DRAWING FILE : Drawing/Desk/C L717TWB5W5P3R-1		
	ANGLE OF PROJECTION 		
	SIZE DRAWING NO. A4 C L717TWB5W5P3R		

Amphenol TITLE Hybrid connector, TW series		
SCALE NONE	SHEET 1 OF 1	REV. 1