



Automatización Eléctrica
Especialistas en Automatización

At the end of this document you will find links to products related to this catalog. You can go directly to our shop by clicking [HERE](#). [HERE](#)

Limit, micro and foot switches

Limit switches, K series

Accessories and spare parts for KB - KC - KM and KN type limit switches

Contact blocks



K X B...

Order code	Contacts	Qty per pkg	Wt [kg]
		n°	[kg]
KX B S11	1NO+1NC Snap action ^{①②}	10	0.021
KX B S02	2NC Snap action ^{①②}	10	0.021
KX B A11	1NO+1NC Slow break, make before break ^{①②}	10	0.021
KX B L11	1NO+1NC Slow break ^②	10	0.021
KX B L02	2NC Slow break ^②	10	0.021
KX B L20	2NO Slow break	10	0.021
KX B L12	1NO+2NC Slow break ^{②③}	10	0.026
KX B L21	2NO+1NC Slow break ^{②③}	10	0.026
KX B L03	3NC Slow break ^{②③}	10	0.026

- ① Not suitable for key operated KBN / KCN, hinged operating KBP / KCP / KMP / KNP and slotted lever KBQ / KCQ / KMQ / KNQ types.
- ② Direct opening operation \rightarrow safety function according to IEC/EN 60947-5-1.
- ③ Not suitable for KC and KN types.

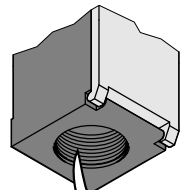
Body complete with contact block



KX CB... - KX CM...



KX CC... - KX CN...



M20 CABLE ENTRY
For types with PG13.5 cable entry, add the letter P at the end of the order code while for 1/2 NPT, add N. E.g. KXCCL11P - KXCCL11N

Order code Plastic body	Metal body	Contacts	Qty per pkg	Wt [kg]
			n°	[kg]

One bottom cable entry. Dimensions to EN 50047.

KX CB S11	KX CM S11	1NO+1NC Snap action ^{①②}	10	④
KX CB S02	KX CM S02	2NC Snap action ^{①②}	10	④
KX CB A11	KX CM A11	1NO+1NC Slow break, make before break ^{①②}	10	④
KX CB L11	KX CM L11	1NO+1NC Slow break ^②	10	④
KX CB L02	KX CM L02	2NC Slow break ^②	10	④
KX CB L20	KX CM L20	2NO Slow break	10	④
KX CB L12	KX CM L12	1NO+2NC Slow break ^{②③}	10	④
KX CB L21	KX CM L21	2NO+1NC Slow break ^{②③}	10	④
KX CB L03	KX CM L03	3NC Slow break ^{②③}	10	④

Two side cable entries. Dimensions compatible to EN 50047.

KX CC S11	KX CN S11	1NO+1NC Snap action ^{①②}	10	④
KX CC S02	KX CN S02	2NC Snap action ^{①②}	10	④
KX CC A11	KX CN A11	1NO+1NC Slow break, make before break ^{①②}	10	④
KX CC L11	KX CN L11	1NO+1NC Slow break ^②	10	④
KX CC L02	KX CN L02	2NC Slow break ^②	10	④
KX CC L20	KX CN L20	2NO Slow break	10	④

- ① Not suitable for key operated KBN / KCN, hinged operating KBP / KCP / KMP / KNP and slotted lever KBQ / KCQ / KMQ / KNQ types.
- ② Direct opening operation \rightarrow safety function according to IEC/EN 60947-5-1.
- ③ Not suitable for KC and KN types.
- ④ Consult Customer Service for information; see contact details on inside front cover.

General characteristics

The KXB contact blocks can be used with the K series of limit switches. Combinations of 2 contacts with slow-break or snap action and 3 slow-break contacts, for KB and KM types only, are available. The NC contacts have direct opening operation, a specific safety principle. The particular four-point contacts warrant high conductivity in any sort of application. The removal of the contacts from the limit switch body provides remarkable wiring ease and reduces installation time as well. The KX C... bodies, complete with auxiliary contacts, can be used as spare parts for the K series limit switches or coupled with the KX A... operating heads, to obtain complete limit switches in the required configurations. The body cover is hinged at the bottom and removable to have the best access. Each body includes the innovative locking bayonet mechanism of the operating head. Plastic and metal types are available.

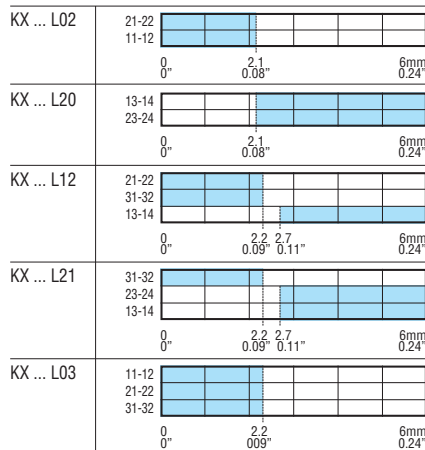
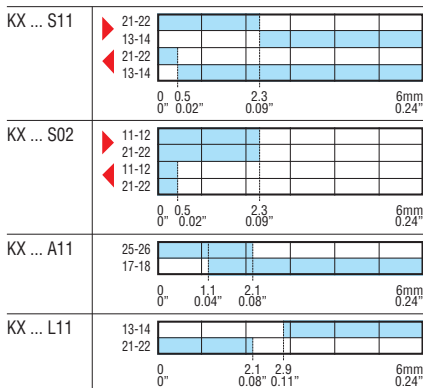
Operational characteristics

- Mechanical life: >10 million cycles
- IEC conventional thermal current Ith: 10A
- UL/CSA and IEC/EN 60947-5-1 designation:
 - A600 Q300 for KX CB-KX CC types
 - A300 Q300 for KX CM-KX CN types
- IEC rated insulation voltage Ui:
 - 690VAC for KX CB-KX CC types
 - 440VAC for KX CM-KX CN types
- IEC rated impulse withstand voltage Uimp:
 - 6kV for KX CB-KX CC types
 - 4kV for KX CM-KX CN types
- Class II insulation for KX CB-KX CC only
- Contact resistance: <10mΩ
- Short-circuit backup protection: 10A gG/SC quick fuse
- Housing:
 - KX CB-KX CC types - Self-extinguishing double-insulation polymer thermoplastic
 - KX CM-KX CN types - Aluminium-zinc alloy
- Cable entry: M20 standard supplied; PG13.5 and 1/2 NPT available (see the side note for details)
- Operating head fixing: Locking bayonet insert
- Cable connection: Self-releasing screw terminal
- Tightening torque:
 - Switch fixing: 2.5Nm / 22.1lbin
 - Contact terminals: 0.8Nm / 7lbin
 - Body lid screw fixing: 0.8Nm / 7lbin
- Conductor section: 1 or 2 2.5mm² max / 16-14 AWG
- Ambient conditions:
 - Operating temperature: -25 ... +70°C
 - Storage temperature: -40 ... +70°C
 - Suitable for ambient pollution degree 3
- IEC degree of protection:
 - IP20 for terminals
 - IP65 for body housing (with operating head mounted).

Certifications and compliance

Certifications obtained: GOST for all, UL Listed, for US and Canada (File E93601), as Auxiliary Devices for KX C... body types only. UL recognized for USA and Canada (File E93601) as component - Auxiliary devices for auxiliary contacts only; products having this type of marking are intended for use as components of complete workshop - assembled equipment. Comply with standards: EN50047, IEC/EN 60947-1, IEC/EN60947-5-1, IEC/EN 60204-1, UL508, CSA C22.2 n° 14.

- ▶ Forward travel of snap action contacts
- ◀ Return travel of snap action contacts



Below is a list of articles with direct links to our shop Electric Automation Network where you can see:

- Quote per purchase volume in real time.
- Online documentation and datasheets of all products.
- Estimated delivery time enquiry in real time.
- Logistics systems for the shipment of materials almost anywhere in the world.
- Purchasing management, order record and tracking of shipments.

To access the product, [click on the green button.](#)

Product	Code	Reference	Product link
Contacts 1NO+1NC snap action	KXBS11		Buy on EAN
Plastic body. Contacts 1NO+1NC slow break, make before break	KXCBA11		Buy on EAN
Contacts 1NO+1NC slow break make before break	KXBA11		Buy on EAN
Contacts 2NC slow break	KXBL02		Buy on EAN
Contacts 3NC slow break	KXBL03		Buy on EAN
Contacts 1NO+1NC slow break	KXBL11		Buy on EAN
Contacts 1NO+2NC slow break	KXBL12		Buy on EAN
Contacts 2NO slow break	KXBL20		Buy on EAN
Contacts 2NO+1NC slow break	KXBL21		Buy on EAN
Contacts 2NO snap action	KXBS02		Buy on EAN
Plastic body. Contacts 2NC slow break	KXCBL02		Buy on EAN
Plastic body. Contacts 3NC slow break	KXCBL03		Buy on EAN
Plastic body. Contacts 1NO+1NC slow break	KXCBL11		Buy on EAN
Plastic body. Contacts 1NO+2NC slow break	KXCBL12		Buy on EAN
Plastic body. Contacts 2NO slow break	KXCBL20		Buy on EAN

Plastic body. Contacts 2NO+1NC slow break	KXCBL21	Buy on EAN
Plastic body. Contacts 2NO snap action	KXCBS02	Buy on EAN
Plastic body. Contacts 1NO+1NC snap action	KXCBS11	Buy on EAN
Plastic body. Contacts 1NO+1NC slow break, make before break	KXCCA11	Buy on EAN
Plastic body. Contacts 2NC slow break	KXCCL02	Buy on EAN
Plastic body. Contacts 1NO+1NC slow break	KXCCL11	Buy on EAN
Plastic body. Contacts 2NO slow break	KXCCL20	Buy on EAN
Plastic body. Contacts 2NO snap action	KXCCS02	Buy on EAN
Plastic body. Contacts 1NO+1NC snap action	KXCCS11	Buy on EAN
BODY COMPLETE WITH CONTACT BLOCK, 1 BOTTOM CABLE ENTRY. DIMENSIONS TO EN 50047, METAL BODY. CONTACTS 1NO+1NC SLOW BREAK, MAKE BEFORE BREAK	KXCMA11	Buy on EAN
Metal body. Contacts 2NC slow break	KXCML02	Buy on EAN
Metal body. Contacts 3NC slow break	KXCML03	Buy on EAN
Metal body. Contacts 1NO+1NC slow break	KXCML11	Buy on EAN
Metal body. Contacts 1NO+2NC slow break	KXCML12	Buy on EAN
Metal body. Contacts 2NO slow break	KXCML20	Buy on EAN
Metal body. Contacts 2NO+1NC slow break	KXCML21	Buy on EAN
Metal body. Contacts 2NO snap action	KXCMS02	Buy on EAN
Metal body. Contacts 1NO+1NC snap action	KXCMS11	Buy on EAN
Metal body. Contacts 1NO+1NC slow break, make before break	KXCNA11	Buy on EAN
Metal body. Contacts 2NC slow break	KXCNL02	Buy on EAN
Metal body. Contacts 1NO+1NC slow break	KXCNL11	Buy on EAN
Metal body. Contacts 2NO slow break	KXCNL20	Buy on EAN
Metal body. Contacts 2NO snap action	KXCNS02	Buy on EAN
Metal body. Contacts 1NO+1NC snap action	KXCNS11	Buy on EAN